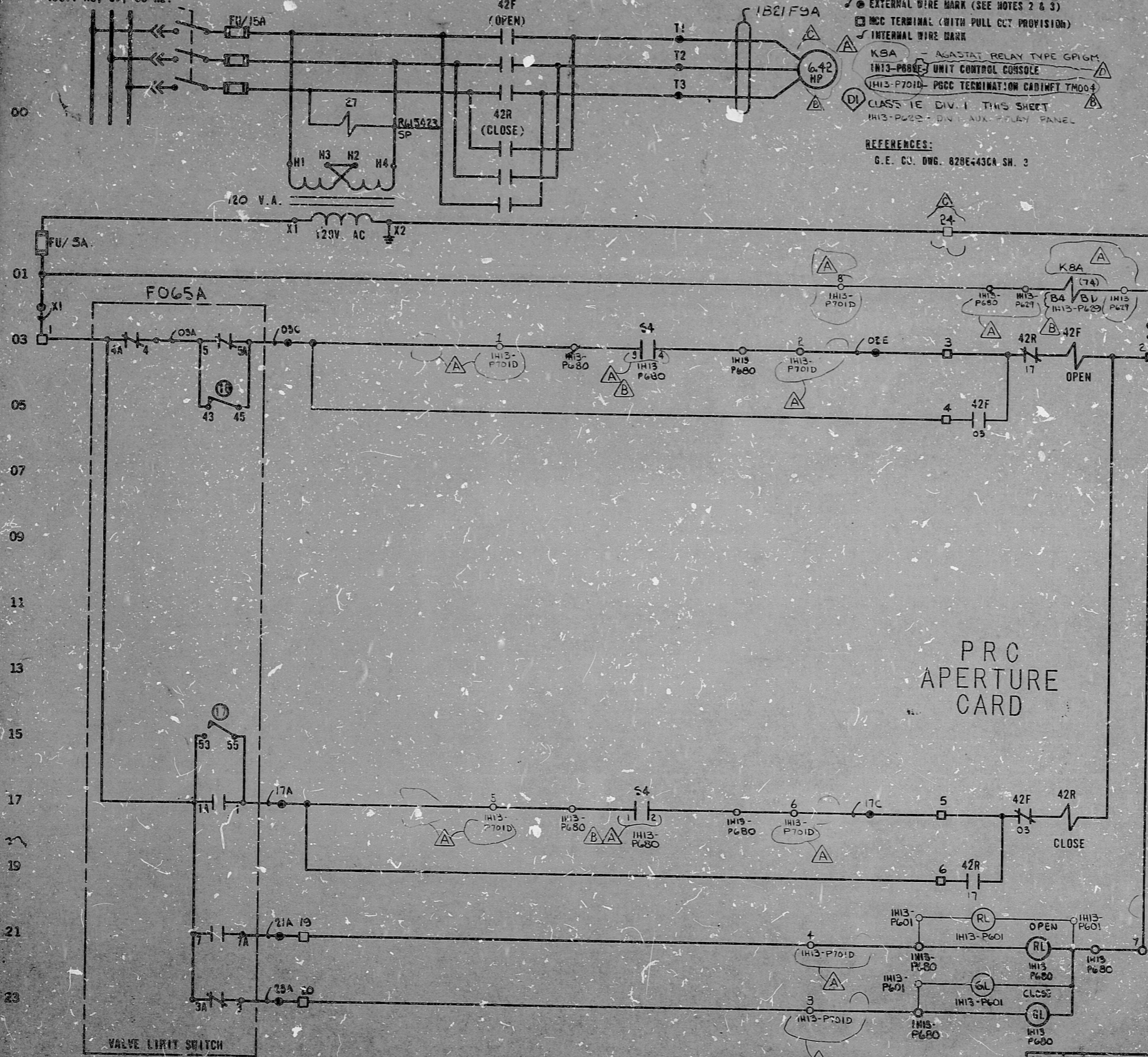


MOTOR CONTROL CENTER EPIAOT COMPT F  
480V. AC, 3Ø, 60 HZ.



LEGEND:

- ⊙ EXTERNAL WIRE MARK (SEE NOTES 2 & 3)
- ⊠ MCC TERMINAL (WITH PULL OUT PROVISION)
- INTERNAL WIRE MARK
- K8A - AGASTAT RELAY TYPE GR1GM
- 1H13-P680E-7 UNIT CONTROL CONSOLE
- 1H13-P701D - PCCC TERMINATION CABINET TMO04
- CLASS 1E DIV. 1 THIS SHEET
- 1H13-P680 - DIV. 1 AUX. CONTROL PANEL

REFERENCES:

G. E. CO. DWG. 828E-43CA SH. 3

NOTES:

1. ALL DEVICES WITHOUT LOCATION MARKS ARE LOCATED IN M.C.C.
2. ALPHABETICAL WIRE MARKS ARE PREFIXED BY:  
S-SYSTEM NO., SHEET NO., & LINE NO. (EXAMPLE B21A0003A)
3. POTENTIAL WIRE MARKS ARE PREFIXED BY:  
SUB-SYSTEM NO. & SHEET NO. (EXAMPLE B21A00X1)
4. DEVICE DESIGNATIONS ARE PREFIXED BY: UNIT AND  
SYSTEM NO. (EXAMPLE 1B21-F005A) EXCEPT AS NOTED (SEE NOTE 7).
5. VALVE SHOWN IN FULL CLOSED POSITION.
6. FOR GRAPHIC STANDARDS REFER TO DRAWING 8-208-001.
7. THE FOLLOWING DEVICES ARE PREFIXED BY 1B21A: S4 - SWITCH  
K8A - RELAY

ROTOR	LIMIT SW. CONTACT DEVELOPMENT				CONTACT LOCATION
	VALVE POSITION		CONTACT		
	1	2	3	4	
1					17
2					SPARE
3					23
4					03
5					03
6					SPARE
7					21
8					SPARE
9					SPARE
10					SPARE
11					SPARE
12					SPARE
13					SPARE
14					SPARE
15					SPARE
16					SPARE

- 17 CLOSING TORQUE SWITCH INTERRUPTS CONTROL CIRCUIT IF MECHANICAL OVERLOAD OCCURS DURING CLOSING CYCLE OR FULLY CLOSED VALVE.
  - 18 OPERING TORQUE SWITCH INTERRUPTS CONTROL CIRCUIT IF MECHANICAL OVERLOAD OCCURS DURING OPERING CYCLE OR FULLY OPENED VALVE.
  - CLOSED CONTACT
  - - - OPEN CONTACT
- ROTORS 3 AND 4 CAN BE SET AT VALVE POSITION: FULL OPEN, FULL CLOSED OR ANY POSITION IN BETWEEN AS INDICATED BY POINTS A AND B.  
REF: PHILA. GEAR CORP. DWG. 15-W7-2753-3 REV. A

PRC  
APERTURE  
CARD

S4 / 1H13-P680		CONTROL SWITCH		CONTACT LOCATION
(CMA 1) CONTACTS	NAMEPLATE (F.V.)	CLOSE	OPEN	
TR 1 2	X			17
TR 3 4			X	03
BF 5 6	X			SPARE
BR 7 8			X	SPARE
OPER BLOCK CR2940-JS203A		X - CLOSED CONTACT		
SPRING RETURN TO NORMAL				

NUCLEAR SAFETY RELATED

THE CLEVELAND ELECTRIC ILLUMINATING CO.  
PEERY NUCLEAR POWER PLANT UNIT  
ELECTRICAL-ELEMENTARY DIAGRAM  
NUCLEAR BOILER SYSTEM  
FEEDWATER INLET SHUTOFF VALVE  
F065A

REV	DATE	BY	CHKD	APPROVALS	DESCRIPTION
D	7-26-77	Y2	TAP	DEC	CHANGED DESIGNATION UNIT CONTROL CONSOLE
C	7-26-77	PM	PM	DEC	CHANGED HPC FUSE INFORM ADDED MCC
B	7-26-77	PM	PM	DEC	ADDED FITS INFORMATION CHANGED HP RATING
A	7-26-77	WV	WV	DEC	ADDED FUSE SIZES, CIL IDENT, REVISED, ADDED TERM DESIGNATIONS, REVISED SWITCH DEVELOPMENT PER ECR 346-023-01-45

ELEM DIAG 1B21-F005A



Rids

8212130213

