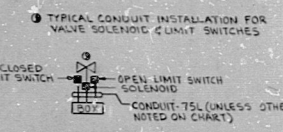
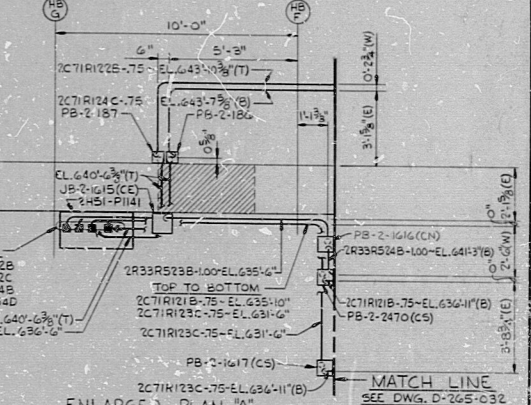


CHART A
 SOUTH TO NORTH
 23480X-75(4700)
 233388X-25(4600)
 233046X-15(3624)
 233103X-20(3644)
 233224X-25(3610)
 233287X-25(3610)
 233287X-25(3610)
 233287X-25(3610)



| VALVE MPL No. | BOX No. | SOLENOID No. CND No. | LIMIT SWITCH No. CND No. (OPEN) CND No. (CLOSE) |
|------------------|------------|-------------------------|--|
| 2M41-F10 | TB-2144 | 2M41-F10 | 2M41-F10 |
| 2M41-F11 | TB-2144 | 2M41-F11 | 2M41-F11 |



ENLARGED PLAN A
 SCALE: 3/8" = 1'-0" COORDS E D
 NOTES:
 1. FOR LEGEND, NOTES, REFERENCES, AND STANDARD DETAILS, SEE PAVING D-215-001.

PRC APERTURE CARD

NUCLEAR SAFETY RELATED

| REVISIONS | DATE | BY | DESCRIPTION |
|-----------|------|----|---|
| 1 | | | CONSTRUCTION SET |
| 2 | | | LIMITED CONSTRUCTION: AS NOTED |
| 3 | | | PRELIMINARY NOT FOR CONSTRUCTION BIDDING PURPOSES |

RELEASED FOR ENGR.
 THE CLEVELAND ELECTRIC ILLUMINATING COMPANY
 PERRY NUCLEAR POWER PLANT UNIT 2
 ELECTRICAL
 CONDUIT LAYOUT
 HEATER BAY - EAST - EL. 520'-6"

KEY PLAN

| NO. | DESCRIPTION | DATE | BY | CHKD. |
|-----|----------------|--------|----|-------|
| 1 | CONDUIT LAYOUT | 04/549 | J | G |

ENGINEER APPROVALS
 GILEMET ASSOCIATES, INC.
 ENGINEERS, A.E.C. CONSULTANTS

34"

22"

17"

11"

8.5"

11"

17"

22"

34"

34"

22"

17"

11"

8.5"

11"

17"

22"

34"

82-2100480

RIDS

