

38

38

22

22

17

17

11

11

8.5

8.5

8.5

8.5

11

11

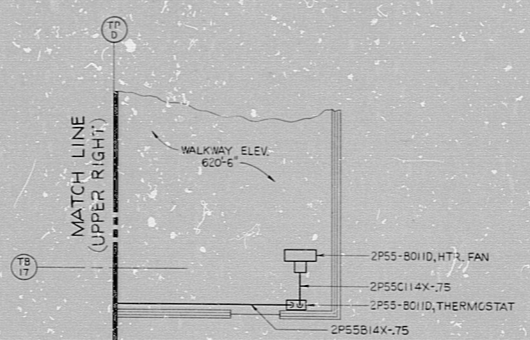
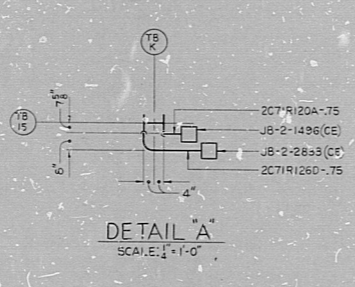
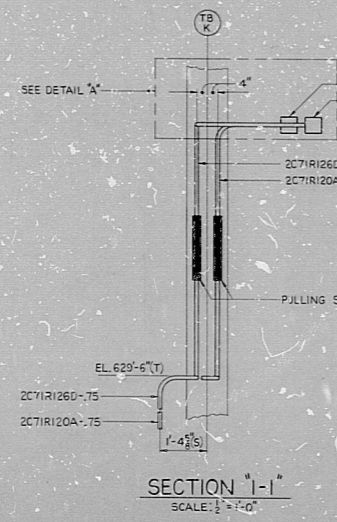
17

17

22

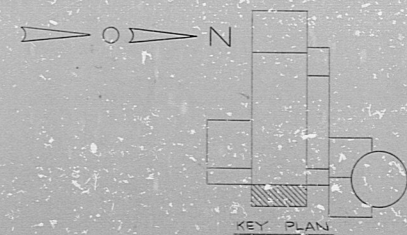
22

34



- NOTES:
- FOR LEGEND, NOTES, REFERENCES, AND STANDARD DETAILS, SEE DWG. D-215-001.
 - CONDUITS CONTINUED UP, SEE DWG. D-265-041. CONDUITS CONTINUED DOWN, SEE DWG. D-265-021.

PRO APERTURE CARD



NO.	DATE	BY	CHKD.	APPROVAL
A				
B				
C				
D				

NUCLEAR SAFETY RELATED	
CONSTRUCTION	3/23/50
LIMITED CONSTRUCTION	AS NOTED
PRELIMINARY NOT FOR CONSTRUCTION	
BIDDING PURPOSES	
DATE	R-LEASED FOR ENGR.
THE CLEVELAND ELECTRIC ILLUMINATING COMPANY	
PERRY NUCLEAR POWER PLANT UNIT 2	
ELECTRICAL	
CONDUIT LAYOUT	
TURBINE BUILDING LUBE OIL AREA - EL. 620'-6"	
DESIGNED BY	GILBERT ASSOCIATES, INC.
ENGINEERS AND CONSULTANTS	
DATE	04 45 49 D-265-031 D
SCALE	1/4" = 1'-0"
NO.	04 45 49 D-265-031 D
REV.	

CND LYT T/3 LUBE OIL AREA EL 620-6

RIDS

82 210 0462

