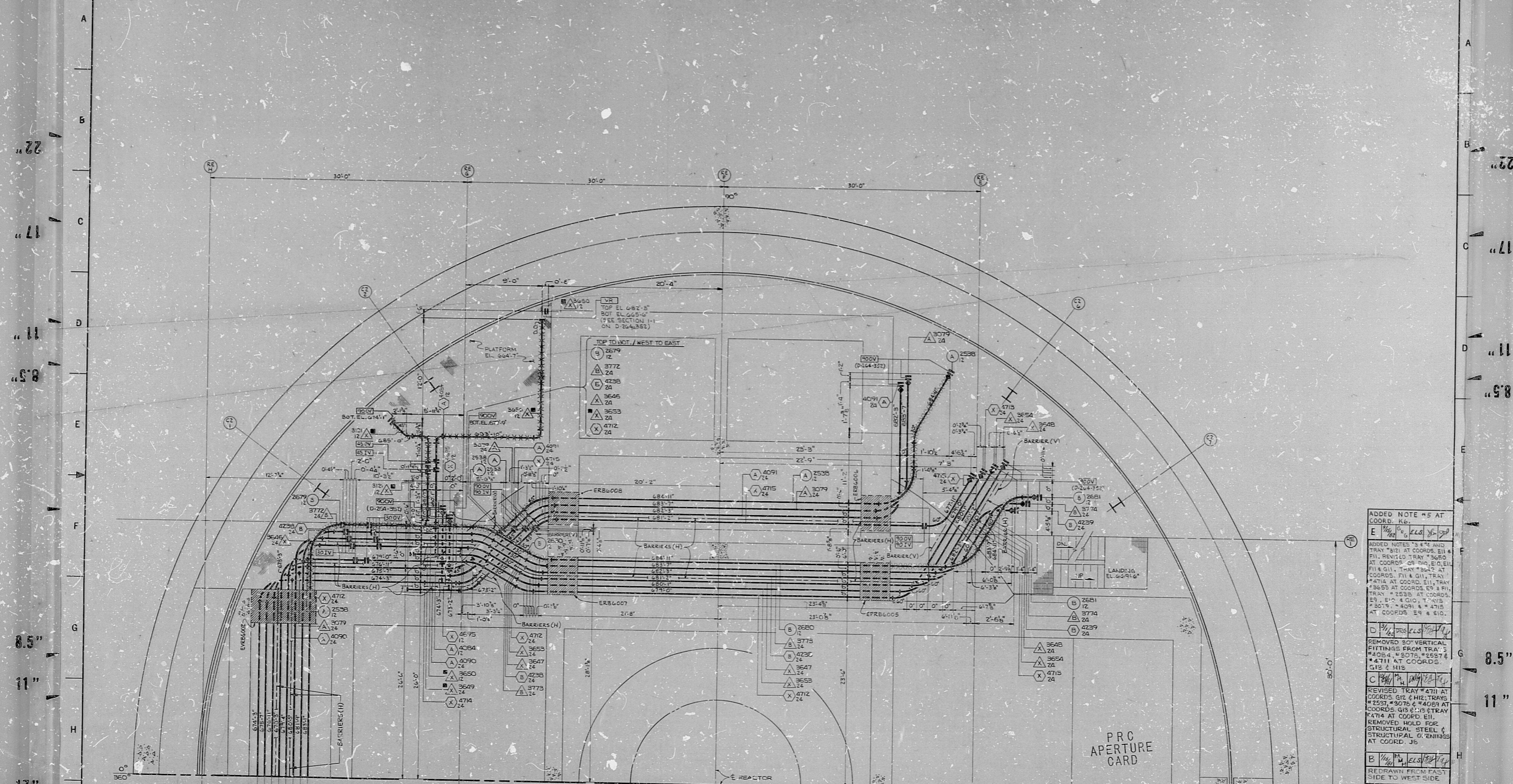
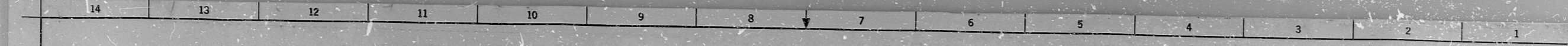


34"

34"



ADDED NOTE #5 AT COORD. REF. E 1/8" = 1' 0" P.L. 6/16/59

ADDED NOTES #4 AND TRAY #111 AT COORDS E11 & F11, TRAY #360 AT COORDS OF THIS E.I.L. E.I.L. #114 G11, TRAY #242 AT COORDS. F11 & G11, TRAY #214 AT COORDS. E11, TRAY #2655 AT COORDS. E9 & F9, TRAY # 2535 AT COORDS. E3 & E10 & G10, TRAYS # 2574, # 4091 & # 4715 AT COORDS. E8 & E10.

D 1/8" = 1' 0" P.L. 6/16/59  
REMOVED 50 VERTICAL FITTINGS FROM TRAYS #4054, #5075, #5574, #4711 AT COORDS G12 & H12.

C 1/8" = 1' 0" P.L. 6/16/59  
REVISED TRAY #4711 AT COORDS E12 & H12, TRAYS #2537, #3076 & #4089 AT COORDS. G15 & H15, TRAY #4716 AT COORD. E11. REMOVED HOLD FOR STRUCTURAL STEEL & STRUCTURAL G-CHANNELS AT COORD. J6.

B 1/8" = 1' 0" P.L. 6/16/59  
REDRAWN FROM EAST SIDE TO WEST SIDE.

A 1/8" = 1' 0" P.L. 6/16/59  
NO DATE MADE CHECK APPROVAL

NUCLEAR SAFETY RELATED

NO.	DATE	DESCRIPTION	BY	APPROVED
1	11/17/58	CONSTRUCTION	SEP 30 1958	[Signature]
2		LIMITED CONSTRUCTION AS NOTED		
3		PRELIMINARY NOT FOR CONSTRUCTION		
4		BIDDING PURPOSES		

DATE RELEASED FOR ENGR. THE CLEVELAND ELECTRIC ILLUMINATING COMPANY PERRY NUCLEAR POWER PLANT UNIT 2

ELECTRICAL CABLE TRAY LAYOUT

REACTOR BUILDING - WEST - EL. 664'-7"

GILBERT ASSOCIATES, INC. ENGINEERS AND CONSULTANTS

SCALE: AS SHOWN ON DRAWING 04 4549 D-264-362 E

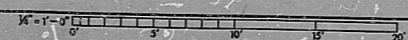
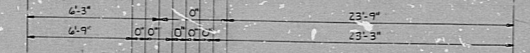
DRAWING NUMBER REV

PRC APERTURE CARD

KEY PLAN

HOLD FOR EXPANSION PLATES.

- NOTES:
1. FOR LEGEND, NOTES, REFERENCES, AND STANDARD DETAILS, SEE DWG. D-264-001.
  2. DIMENSION LINES MARKED WITH "REF" DESIGNATION (SEE A/E FACTS) AND ARE USED ONLY FOR COMPUTER LABEL ROUTING.
  3. TRAY SYMBOL WITH (B) INDICATES TRAYS ARE 5" DEEP (INSIDE DIMENSION).
  4. DIMENSION LINES WITH (A) INDICATES JUNCTION POINT OF 3" AND 5" DEEP TRAYS.
  5. THE FOLLOWING TRAYS MAY REQUIRE TWO INCH SIDE RAIL EXTENSIONS: 3653 (G/7) AND 3854 (G/5).



TRAY LAYO R/B WEST EL 664-7

22"

22"

17"

17"

11"

11"

8.5"

8.5"

7.7"

7.7"

7.7"

7.7"

7.7"

7.7"

7.7"

7.7"

7.7"

7.7"



8212100459

RIDS

