

34"

34"

22"

22"

17"

17"

11"

11"

8.5"

8.5"

8.5"

8.5"

11"

11"

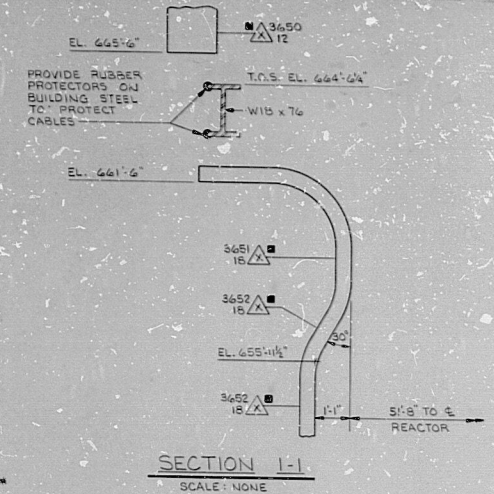
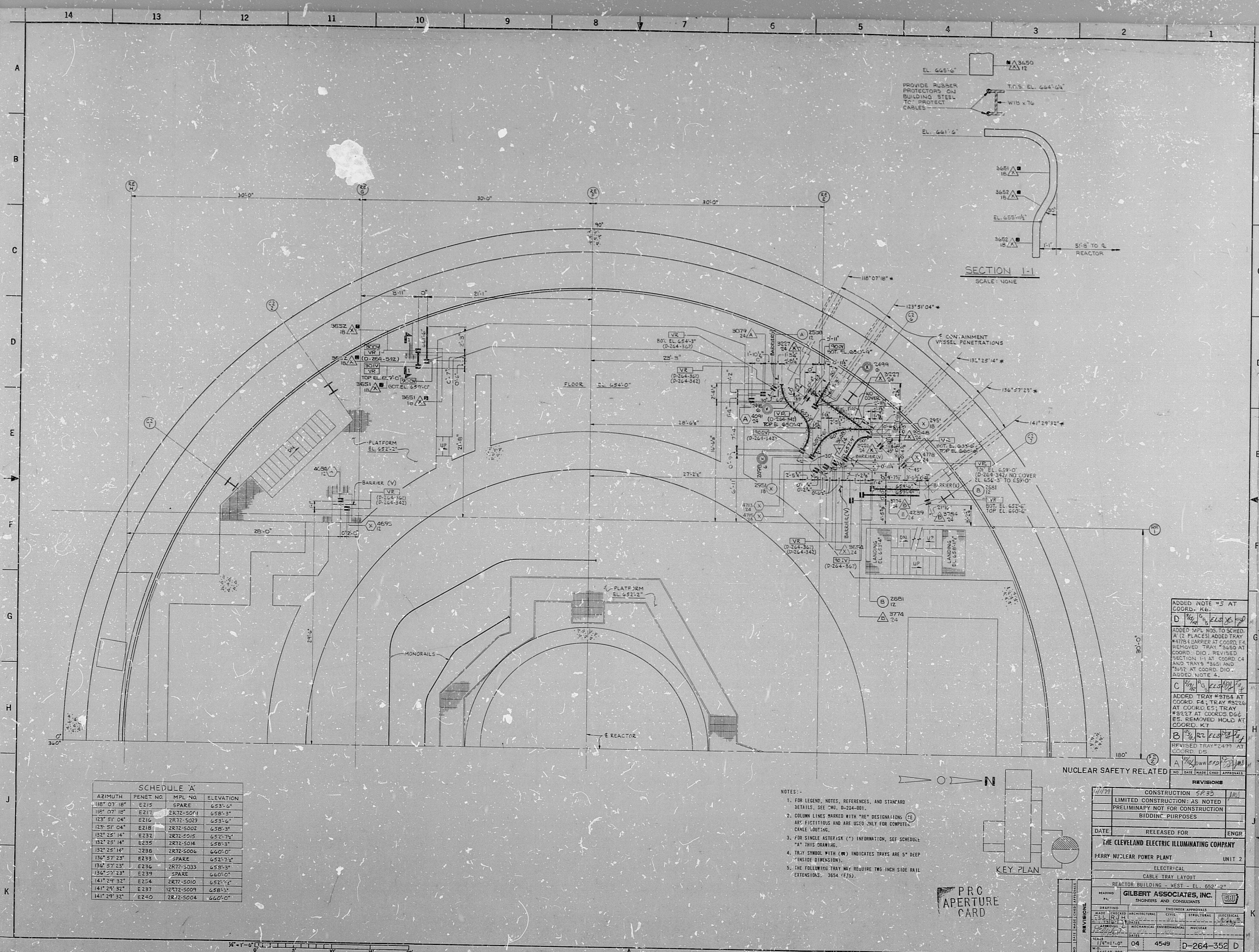
17"

17"

22"

22"

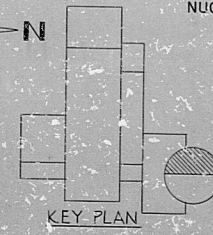
34"



ADDED NOTE #5 AT COORD. K6.
 D 1/2" DOWN FROM 1/2" UP
 ADDED TRAY #8784 TO SCHEDULE 'A' (2 PLACES); ADDED TRAY #8784 BARBER AT COORD. E4. REMOVED TRAY #3650 AT COORD. D10. REVISED SECTION I-I AT COORD. C4 AND TRAYS #3651 AND #3652 AT COORD. D10. ADDED NOTE #4.
 C 1/2" DOWN FROM 1/2" UP
 ADDED TRAY #8784 AT COORD. E4. TRAY #8784 AT COORD. E5; TRAY #8787 AT COORD. B6. E5. REMOVED HOLD AT COORD. K7.
 B 1/2" DOWN FROM 1/2" UP
 REVISED TRAY #2479 AT COORD. D6.
 A 1/2" DOWN FROM 1/2" UP

SCHEDULE 'A'			
AZIMUTH	PENET. NO.	MPL. NO.	ELEVATION
118° 07' 18"	E215	SPARE	653'-2"
118° 07' 18"	E217	2R72-S001	658'-3"
123° 51' 04"	E216	2R72-S029	653'-6"
123° 51' 04"	E218	2R72-S028	658'-3"
132° 25' 14"	E232	2R72-S015	652'-11"
132° 25' 14"	E235	2R72-S016	658'-3"
132° 25' 14"	E236	2R72-S006	640'-0"
136° 57' 23"	E233	SPARE	652'-7 1/2"
136° 57' 23"	E236	2R72-S033	658'-3"
136° 57' 23"	E239	SPARE	660'-0"
141° 24' 32"	E254	2R72-S010	652'-11"
141° 24' 32"	E237	2R72-S009	658'-3"
141° 24' 32"	E240	2R72-S004	660'-0"

- NOTES:-
- FOR LEGEND, NOTES, REFERENCES, AND STANDARD DETAILS, SEE CMC, D-204-001.
 - CROWN LINES MARKED WITH "R" DESIGNATIONS ARE FICTITIOUS AND ARE USED ONLY FOR COMPUTER CAMEL ROUTING.
 - FOR SINGLE ASTERISK (*) INFORMATION, SEE SCHEDULE "A" THIS DRAWING.
 - TRAY SYMBOL WITH (M) INDICATES TRAYS ARE 5" DEEP (INSIDE DIMENSION).
 - THE FOLLOWING TRAY MAY REQUIRE TWO INCH SIDE RAIL EXTENSIONS: 3654 (E/S).



NUCLEAR SAFETY RELATED

REVISIONS	
NO.	DATE / MARK / CHG / APPROVAL
1	CONSTRUCTION SP35
2	LIMITED CONSTRUCTION: AS NOTED
3	PRELIMINARY NOT FOR CONSTRUCTION BIDDING PURPOSES
4	DATE RELEASED FOR ENGR

THE CLEVELAND ELECTRIC ILLUMINATING COMPANY
 PERRY NUCLEAR POWER PLANT UNIT 2

ELECTRICAL
 CABLE TRAY LAYOUT
 REACTOR BUILDING - WEST - EL. 652'-2"

DRAWING: GILBERT ASSOCIATES, INC.
 ENGINEERS AND CONSULTANTS

DESIGNED	CHECKED	APPROVED
ARCHITECTURAL	MECHANICAL	ENGINEER APPROVALS
CIVIL	ENVIRONMENTAL	CIVIL
ELECTRICAL	NUCLEAR	ELECTRICAL
MECHANICAL	ENVIRONMENTAL	MECHANICAL
NUCLEAR	NUCLEAR	NUCLEAR

YEAR: 11-1-04
 W.D.: 84545-000
 NO. DATE MARK CHG APPROVAL

TRAY LYT R/B WEST EL 652-2
 D-264-352 D
 DRAWING NUMBER
 REV

82.2100454

RIDS

