

SEE AUXILIARY PLAN A ON PAGES D-264-G-3 FOR ADDITIONAL TRAYS BETWEEN COL LINES A-F AND Z AND A-F AXES

REVISED TRAY SYMBOLS ON TRAYS #3512 & #3513 AT COORD. B14.  
 ADDED NOTE #12 AT COORD. G4.

M ~~REVISED TRAYS #3067 & #3068 AT COORD. H10. TRAY #3067 AT COORD. G10.~~

L ~~REVISED TRAYS #337 & #4565 AT COORD. C15.~~

K ~~ADDED TRAYS 50071, 50045 AT COORDS. H101. H111 TRAY 50045 AT COORD. G10 REFERENCE AT COORD. B5.~~

J ~~ADDED TRAYS #3459 & #3500 AT COORDS. B5 & B6.~~

H ~~ADDED TRAY #257 & REVISED TRAY #2826 AT COORD. B14. ADDED TRAY #2598 & REVISED TRAY #2604 AT COORD. B8. REVISED TRAY #2577 & REVISED TRAY #2530 AT COORD. BY B5, B7, B6, B5.~~

G ~~REVISED TRAY NUMBERS.~~

F ~~REVISED TRAY #2514 AT COORD. F10. ADDED TRAY NUMBERS & SYMBOLS AT COORD. B14.~~

E ~~REVISED TRAY NUMBERS.~~

D ~~ADDED DETAIL REFERENCE AT COORD. A6. REVISED TRAYS #2501, #2501 & #2501 AT COORDS. B6, C7, C8, C9, D1, E1, E2, E3, E4, E5. ADDED TRAYS #3011 & #3012 AT COORD. B10. REVISED TRAYS #2414, #2415 & #2409 AT COORD. A14. TRAYS #2404, #2405, #2406, #2407, #2408, #2409, #2410, #2411, #2412, #2413, #2414, #2415 AT COORD. B14.~~

C ~~ADDED TRAY NUMBERS #2414 & #2415 AT COORDS. A14. BY TASK CHANGED OPENING #24063 & DELETED OPENING #24063 AT COORD. C15.~~

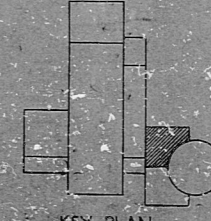
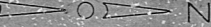
B ~~CHANGED OPENING #24063 TO TRAYS & REVISED TRAY DIMENSIONS & WALL THICKNESS AT COORDS. AS 2H CE & DS. REVISED TRAY #2409. ADDED TRAYS #3011 & #3012. REVISED TRAY DIMENSIONS AT COORDS. A7, B7, B12, C10. RELEASED FOR CONSTRUCTION.~~

A ~~ADDED TRAY NUMBERS #2414 & #2415 AT COORDS. A14. BY TASK CHANGED OPENING #24063 & DELETED OPENING #24063 AT COORD. C15.~~

- NOTES:
1. FOR LEGEND, NOTES, REFERENCES, AND STANDARD DETAILS, SEE DRG. D-264-001.
  2. THE FOLLOWING TRAYS MAY REQUIRE TWO INCH SIDE RAIL EXTENSIONS: 3043 (F10), 3358 (C14), 3358 (C10), 3374 (C13), 3393 (C10), 3504 (D10), 3595 (C7), 3506 (C7), 3514 (B7/4), AND 3819 (C8).

PRO APERTURE CARD

NUCLEAR SAFETY RELATED



KEY PLAN

CONSTRUCTION	D-264-G-3
LIMITED CONSTRUCTION: AS NOTED	
PRELIMINARY NOT FOR CONSTRUCTION BIDDING PURPOSES	
DATE	RELEASED FOR
THE CLEVELAND ELECTRIC ILLUMINATING COMPANY	
PERRY NUCLEAR POWER PLANT UNIT 2	
ELECTRICAL	
CABLE TRAY LAYOUT	
AUXILIARY BUILDING - WEST - JEL - 520145	
DESIGNED BY	GILBERT ASSOCIATES, P.A.C.
CHECKED BY	REVIEWED AND APPROVED
DATE	4549
PROJECT NO.	D-264-232 M
SCALE	AS SHOWN

RIDS

82-210 0434

