

34"

34"

22"

22"

17"

17"

11"

11"

8.5"

8.5"

11"

11"

17"

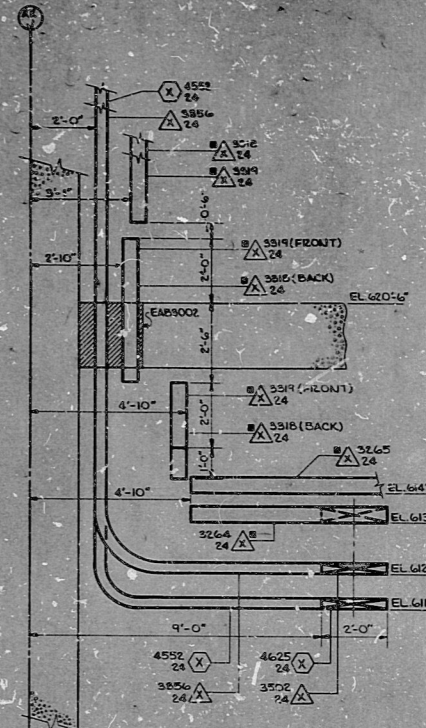
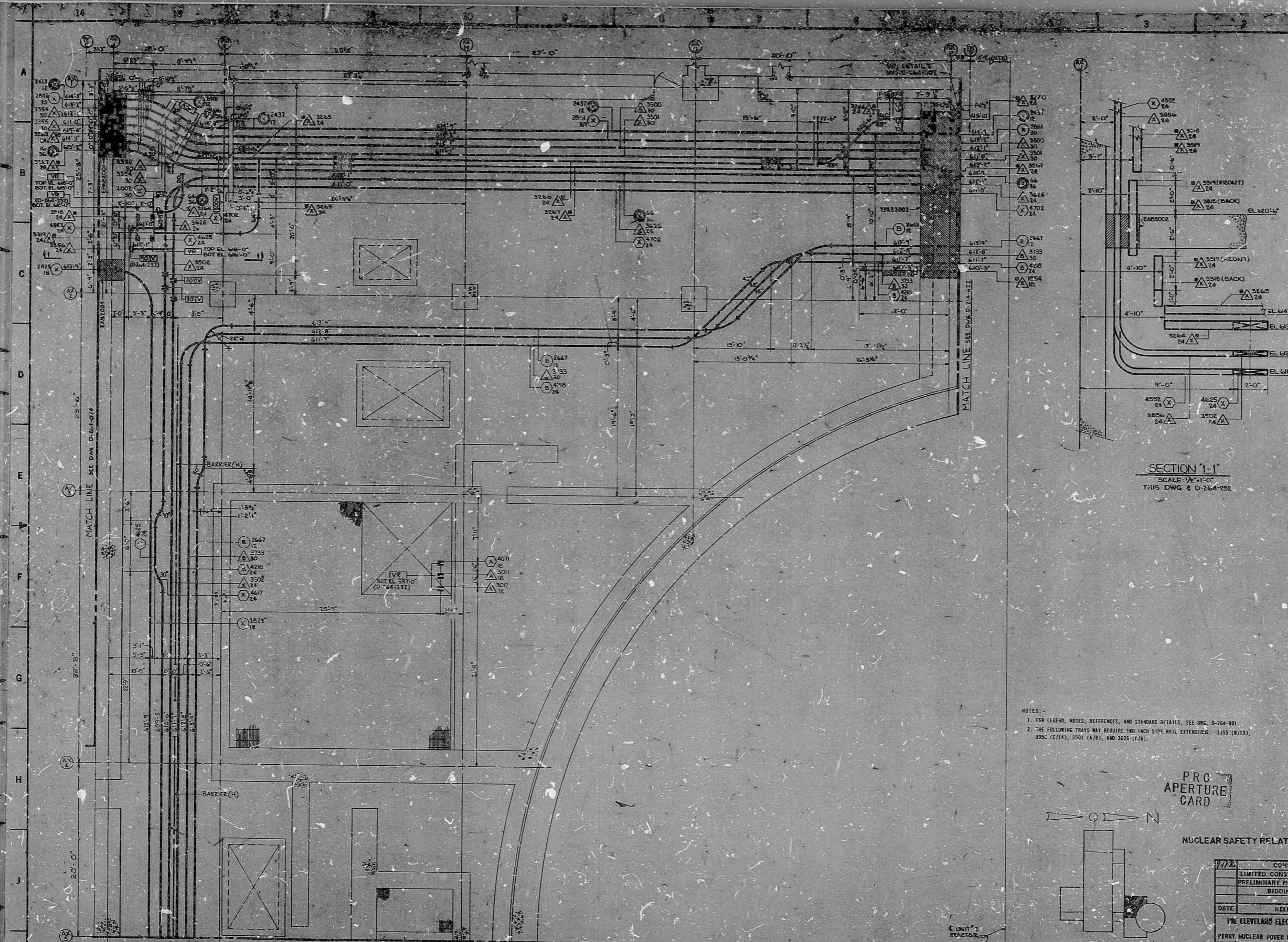
17"

22"

22"

34"

34"



SECTION 1-1
SCALE: 1/4"=1'-0"
THIS DWG. & D-264-222

ADDED NOTE #2 AT COORD. 14-0

CHANGED TRAY #3266 TO 3270 A. COORD. 14-0. REVISED TRAY #3270 AT COORD. 14-0 AND AG AND TRAY #3266 AT COORD. 14-0 AS PER EQ #17074.

REVISED TRAY #3266 AT COORDS. B15 & C2.

ADDED TRAY #354 & BARRIERS AT COORDS. C-6, C-5, TRAY #367 AT COORD. C-7 THRU B-14. TRAY #3244 AT COORD. A-5. B-16 THRU B-14. TRAY #3265 AT COORDS. B-15, C-2, C-3, TRAY #318 AT COORD. C-10, TRAY #316 AT COORD. B-13, TRAY #364 AT COORD. B-15, TRAY #3265 AT COORDS. B-12, E-15, B-14 SECTION 1-1 AT COORD. E-3.

ADDED 6" TRAY GAPS AT COORD. B-12 AS PER ECN #1950-33-314. REVISED TRAY #2823 AT COORD. C-15 THRU J-15 AS PER ECN #145-35-756 & PER ECN #1950-33-314. TRAY #2667 AT COORDS. D-15, E-15 AS PER ECN #271-35-212.

DELETED TRAYS #3373, #3374 & #3375 AT COORD. A12 AS PER ECN #2138-33-165.

REVISED TRAY NUMBERS

REVISED TRAY #467 AT COORDS. F-10 & REVISED TRAY #425 AT COORDS. E-15-F15

ADDED DETAIL C REFERENCE AT COORDS. 15-0. REVISED TRAY #2451 AT COORDS. C-5, C-7, D-7, D-8, D-9, D-10, D-11, D-12, D-13, E-13, E-13, H-13, H-13. REMOVED TRAY #3001 AT COORD. F-7. REVISED TRAY #2021 AT COORD. F-10. ADDED TRAYS #467, #425 AT COORDS. F-10 & F-15.

REVISED ELEVATIONS OF TRAYS #2021, #336 & #70 AT COORDS. A13, A14, B13, B14. RELEASED #336 & #70.

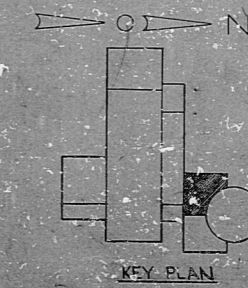
ADDED OPENING BARRIERS AT COORD. C14 AND TRAY #146 AT COORDS. B-15, B-16, B-17, B-18, B-19, B-20, B-21, B-22, B-23, B-24, B-25, B-26, B-27, B-28, B-29, B-30, B-31, B-32, B-33, B-34, B-35, B-36, B-37, B-38, B-39, B-40, B-41, B-42, B-43, B-44, B-45, B-46, B-47, B-48, B-49, B-50, B-51, B-52, B-53, B-54, B-55, B-56, B-57, B-58, B-59, B-60, B-61, B-62, B-63, B-64, B-65, B-66, B-67, B-68, B-69, B-70, B-71, B-72, B-73, B-74, B-75, B-76, B-77, B-78, B-79, B-80, B-81, B-82, B-83, B-84, B-85, B-86, B-87, B-88, B-89, B-90, B-91, B-92, B-93, B-94, B-95, B-96, B-97, B-98, B-99, B-100.

REVISED TRAY DIMENSIONS & WALL THICKNESSES AT COORDS. A5, B5, C5 & D5. CHANGED OPENING BARRIERS TO EPABDOOT, EPABDOOT TO EPABDOOT & REM. NEC. BARRIERS. REMOVED TRAYS #146 & #147. ADDED TRAYS #1 & #10. ADDED TRAY #2523 AT COORDS. B13, C13, D13, E13, F13, G13, H13 & J13. REVISED TRAY DIMENSIONS AT COORD. E-3.

REVISED TRAY #146 AT COORD. E-3.

- NOTES:
- FOR LEGEND, NOTES, REFERENCES, AND STANDARD DETAILS, SEE DWG. D-264-001.
 - THE FOLLOWING TRAYS MAY REQUIRE TWO INCH SIDE RAIL EXTENSIONS: 3353 (B/13), 3352 (C/14), 3301 (A/8), AND 3626 (C/8).

PRO APERTURE CARD



KEY PLAN

NUCLEAR SAFETY RELATED

CONSTRUCTION	5-23-64
LIMITED CONSTRUCTION: AS NOTED	
PRELIMINARY NOT FOR CONSTRUCTION BIDDING PURPOSES	
DATE	RELEASED FOR PERIOD
THE CLEVELAND ELECTRIC ILLUMINATION COMPANY	
PERRY NUCLEAR POWER PLANT	
ELECTRICAL	
CABLE TRAY LAYOUT	
AUXILIARY BUILDING - WEST - EL. 500'-0"	
ENGINEER	CHAS. E. ADAMS, INC.
DESIGNED BY	CHAS. E. ADAMS, INC.
CHECKED BY	CHAS. E. ADAMS, INC.
DATE	5-23-64
PROJECT NO.	04-4549
DWG. NO.	D-264-222 K
SCALE	AS SHOWN

TRAY 157 A/B WEST EL 57'0"

RIDS

821210 0428

