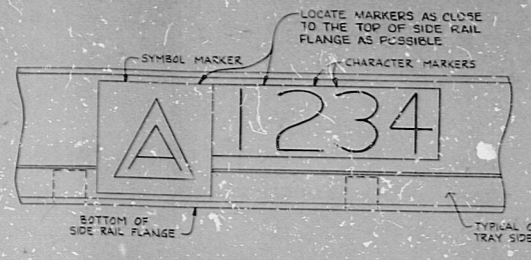
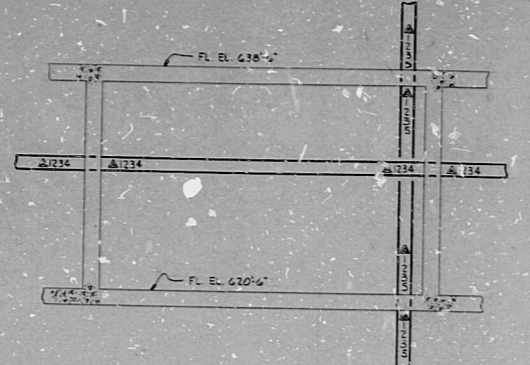


14 13 12 11 10 9 8 7 6 5 4 3 2 1

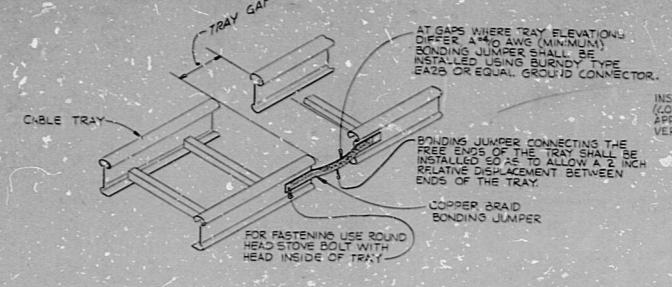
A
B
C
D
E
F
G
H
J
K



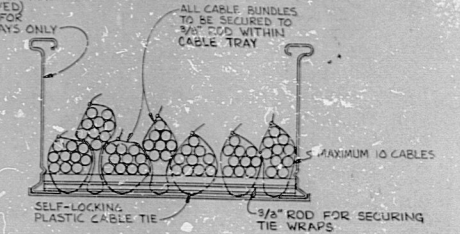
HORIZONTAL TRAY



DETAIL B
SEE NOTE 2

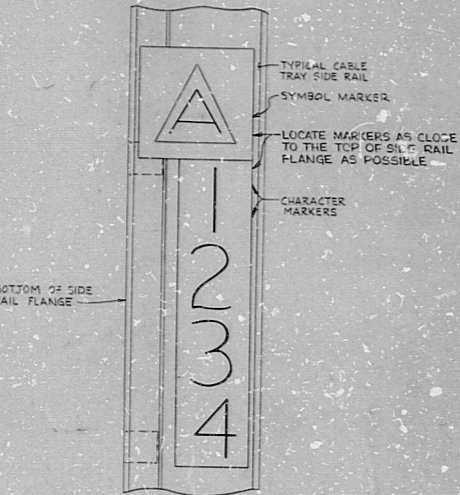


DETAIL C
SEE NOTE 2



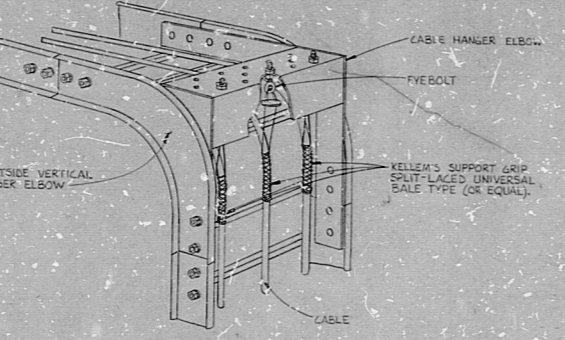
DETAIL D

TYPICAL METHOD FOR SECURING INSTR. CABLES IN VERTICAL INSTR. TRAYS
NOTE: CABLES TO BE FASTENED AT MAXIMUM 24" SPACING
(SEE NOTE 2) DWG D-264-001

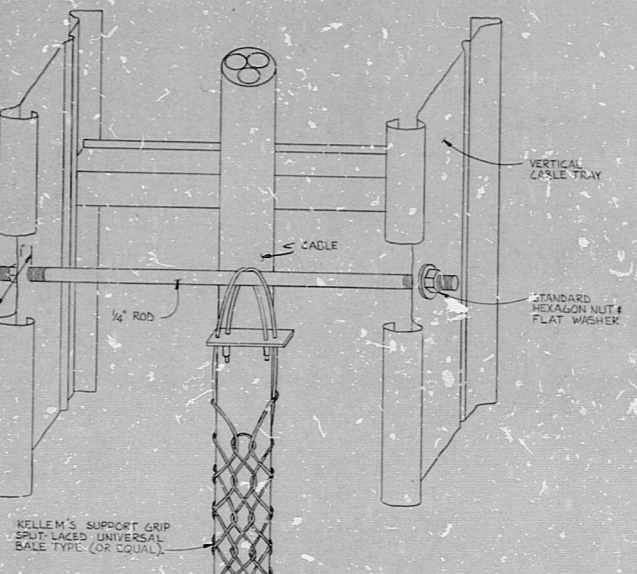


VERTICAL TRAY

NOTE:
ALL TRAY SYMBOLS / CHARACTERS SHOWN ON THIS DRAWING ARE HYPOTHETICAL AND TO BE USED FOR AN EXAMPLE OF ARRANGEMENT ONLY.



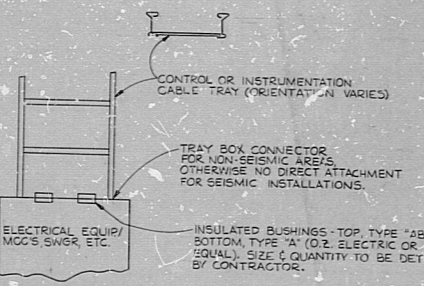
DETAIL E
(SEE NOTE 2) DWG D-264-001



DETAIL F
TYPICAL METHOD OF SUPPORTING CABLES IN VERTICAL TRAYS AT INTERVALS AS INDICATED IN TABLE 1 (SEE NOTE 2) DWG D-264-001

CABLE O.D. (INCHES)	SUPPORT SPACING
0.75 THRU 0.99	NOT GREATER THAN 100 FEET
1.00 THRU 1.19	NOT GREATER THAN 80 FEET
1.20 THRU 1.39	NOT GREATER THAN 60 FEET
1.40 THRU 1.59	NOT GREATER THAN 50 FEET
1.60 THRU 1.79	NOT GREATER THAN 40 FEET
1.80 AND LARGER	NOT GREATER THAN 35 FEET

TABLE 1
SPACINGS FOR CONDUCTOR SUPPORTS (SEE DETAIL 'F')



NOTE:
UPON COMPLETION OF CABLE INSTALLATION A SUITABLE SEALING MATERIAL SHALL BE PACKED AROUND THE CABLES.

DETAIL G
TYPICAL METHOD FOR INSTALLATION OF CONDUIT BUSHING FOR TRAY TO EQUIPMENT INTERFACES

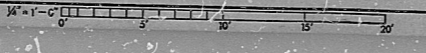
- NOTES:
- FOR ADDITIONAL NOTES, REFERENCES AND DETAILS, SEE DWG. D-264-001.
 - CLASS 1E AND NON-CLASS 1E CABLE TRAYS AND CHANNEL TYPE TRAYS SHALL HAVE SELF-ANCHERING MARKERS APPLIED TO BOTH SIDE RAILS (SEE DETAIL "A") AT MAX. 36" SPACINGS OF 15 FEET ALONG THE CABLE TRAY ROUTE AND AT ALL POINTS OF ENTRY TO AND EXIT FROM ENCLOSED AREAS (SEE DETAIL "B").
 - ALL TRAYS TO BE CLEANED WITH A COMMERCIALY AVAILABLE CLEANSER PRIOR TO AFFIXING MARKERS.
 - ALL MARKERS MUST BE AFFIXED PRIOR TO INSTALLATION OF ANY CABLE.
 - A BONDING JUMPER SHALL BE INSTALLED FOR ELECTRICAL CONTINUITY ACROSS ALL TRAY GAPS. (SEE DETAIL "C").
 - AT EQUIPMENT INTERFACES WHERE CONTROL AND/OR INSTRUMENTATION CABLE TRAYS TERMINATE WATER TIGHT CONDUIT BUSHINGS SHALL BE INSTALLED FOR ENTRY OF CABLES. UPON COMPLETION OF CABLE INSTALLATIONS THE BUSHING OPENINGS SHALL BE PACKED WITH A SUITABLE WATER TIGHT SEALANT (DUX SEAL, OR EQUAL). REFER TO DETAIL "G" FOR TYPICAL INSTALLATION.

NUCLEAR SAFETY RELATED

REVISIONS	
NO.	DATE MADE
1	11/24/84
2	11/24/84
3	11/24/84
4	11/24/84
5	11/24/84
6	11/24/84
7	11/24/84
8	11/24/84
9	11/24/84
10	11/24/84
11	11/24/84
12	11/24/84
13	11/24/84
14	11/24/84
15	11/24/84
16	11/24/84
17	11/24/84
18	11/24/84
19	11/24/84
20	11/24/84

PRC APERTURE GARD

NO.	DATE	BY	CHKD.	APPROVALS
1	11/24/84	J. H. ...	J. H. ...	J. H. ...
2	11/24/84	J. H. ...	J. H. ...	J. H. ...
3	11/24/84	J. H. ...	J. H. ...	J. H. ...
4	11/24/84	J. H. ...	J. H. ...	J. H. ...
5	11/24/84	J. H. ...	J. H. ...	J. H. ...
6	11/24/84	J. H. ...	J. H. ...	J. H. ...
7	11/24/84	J. H. ...	J. H. ...	J. H. ...
8	11/24/84	J. H. ...	J. H. ...	J. H. ...
9	11/24/84	J. H. ...	J. H. ...	J. H. ...
10	11/24/84	J. H. ...	J. H. ...	J. H. ...
11	11/24/84	J. H. ...	J. H. ...	J. H. ...
12	11/24/84	J. H. ...	J. H. ...	J. H. ...
13	11/24/84	J. H. ...	J. H. ...	J. H. ...
14	11/24/84	J. H. ...	J. H. ...	J. H. ...
15	11/24/84	J. H. ...	J. H. ...	J. H. ...
16	11/24/84	J. H. ...	J. H. ...	J. H. ...
17	11/24/84	J. H. ...	J. H. ...	J. H. ...
18	11/24/84	J. H. ...	J. H. ...	J. H. ...
19	11/24/84	J. H. ...	J. H. ...	J. H. ...
20	11/24/84	J. H. ...	J. H. ...	J. H. ...



34"

34"

RIDS

82-2100422

