

34"

34"

14 13 12 11 10 9 8 7 6 5 4 3 2 1

A  
B  
C  
D  
E  
F  
G  
H  
J  
K

A  
B  
C  
D  
E  
F  
G  
H  
J  
K

22"

22"

17"

17"

11"

11"

8.5"

8.5"

11"

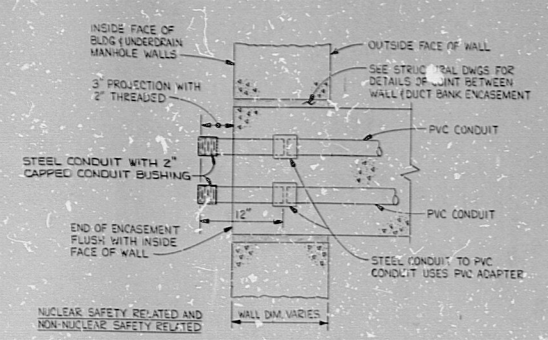
11"

17"

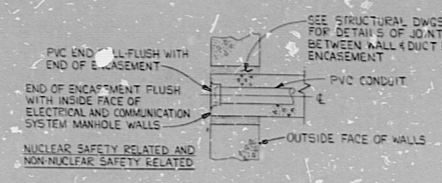
17"

22"

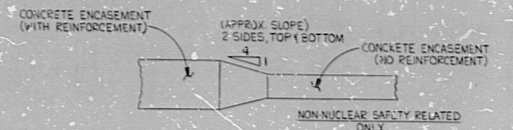
22"



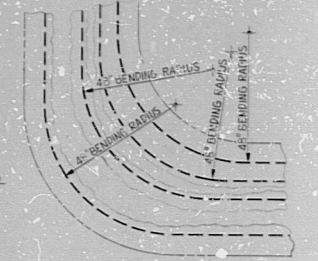
DETAIL "A"  
(SEE NOTE "1" ON DWG D-216-001)  
NO SCALE



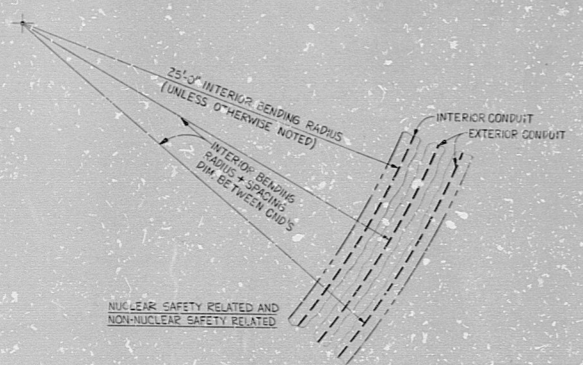
DETAIL "B"  
(SEE NOTE "1" ON DWG D-216-001)  
NO SCALE



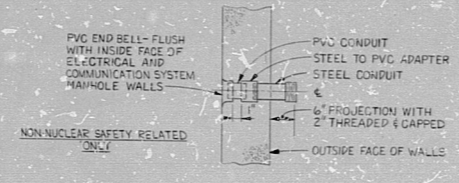
DETAIL "C"  
(SEE NOTE "2" ON DWG D-216-001)  
NO SCALE



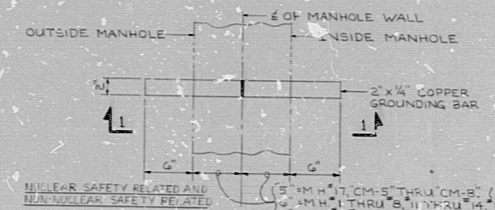
DETAIL "D"  
(SEE NOTE "2" ON DWG D-216-001)  
NO SCALE



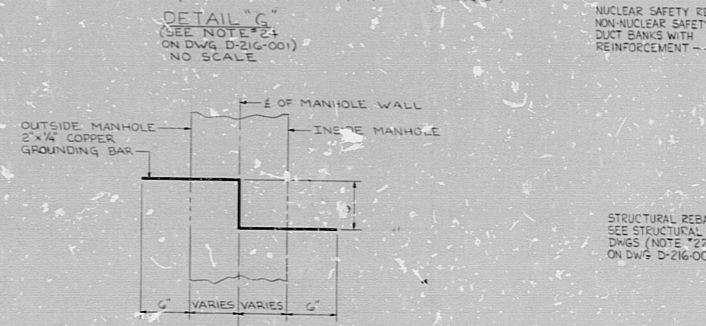
DETAIL "E"  
(SEE NOTE "3" ON DWG D-216-001)  
NO SCALE



DETAIL "F"  
(SEE NOTE "4" ON DWG D-216-001)  
NO SCALE



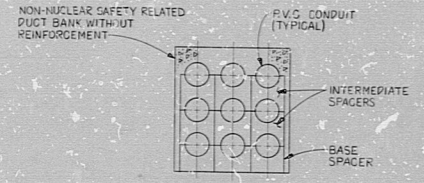
DETAIL "G"  
(SEE NOTE "5" ON DWG D-216-001)  
NO SCALE



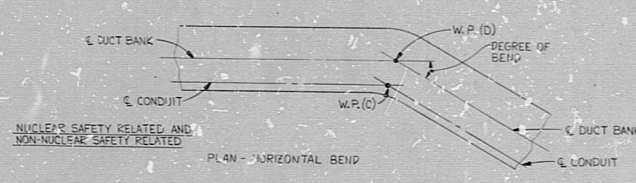
DETAIL "H"  
(SEE NOTE "6" ON DWG D-216-001)  
NO SCALE



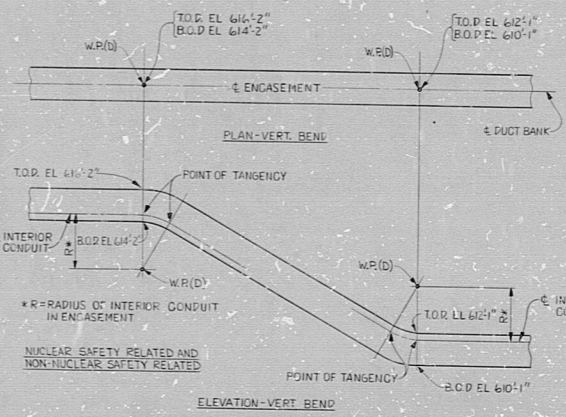
SECTION 1-1  
(SEE NOTE "7" ON DWG D-216-001)  
NO SCALE



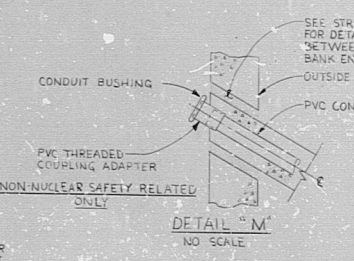
DETAIL "I"  
(SEE NOTE "8" ON DWG D-216-001)  
NO SCALE



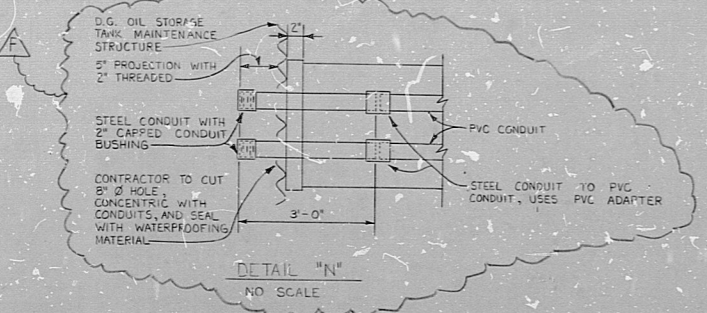
DETAIL "J"  
(SEE NOTE "9" ON DWG D-216-001)  
NO SCALE



DETAIL "K"  
(SEE NOTE "10" ON DWG D-216-001)  
NO SCALE



DETAIL "L"  
(SEE NOTE "11" ON DWG D-216-001)  
NO SCALE



DETAIL "M"  
NO SCALE

PRO APERTURE GARD

NOTES -  
1. FOR NOTES, LEGEND AND REFERENCES SEE ELECTRICAL DRAWING D-216-001.

NUCLEAR SAFETY RELATED

REVISIONS	
NO.	DATE
1	CONSTRUCTION
2	LIMITED CONSTRUCTION: AS NOTED
3	PRELIMINARY NOT FOR CONSTRUCTION
4	BIDDING PURPOSES
5	RELEASED FOR ENGR.

THE CLEVELAND ELECTRIC ILLUMINATING COMPANY  
PERRY NUCLEAR POWER PLANT UNITS 1 & 2  
ELECTRICAL

MISCELLANEOUS SECTIONS AND DETAILS  
GILBERT ASSOCIATES, INC.  
ENGINEERS AND CONSULTANTS

NO.	DATE	BY	CHKD.	APPROVAL
1				
2				
3				
4				
5				

NO. 04 4549 D-216-002 F  
DRAWING NUMBER

NO.	DATE	BY	CHKD.	APPROVAL
1				
2				
3				
4				
5				

34"

34"

RIDS

82-2100376

