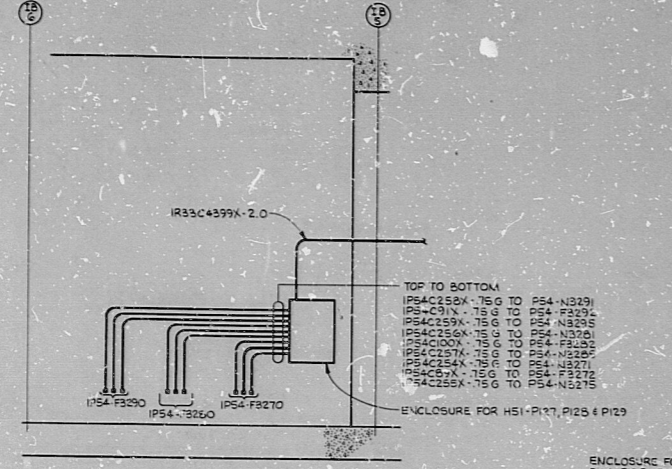
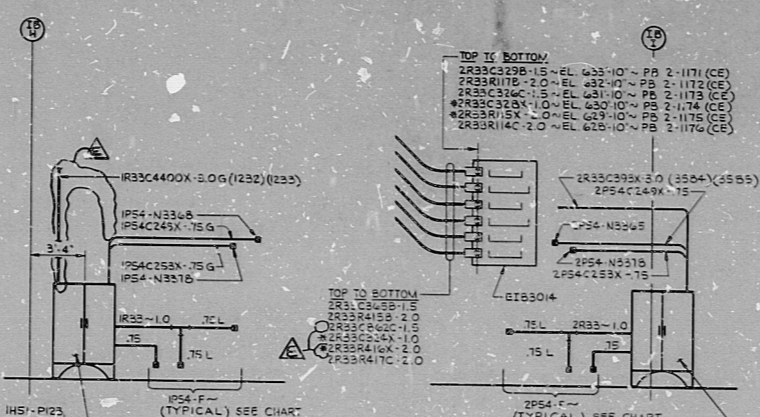


14 13 12 11 10 9 8 7 6 5 4 3 2 1

A
B
C
D
E
F
G
H
J
K



SECTION 2-2
D-215-471
SCALE: 1/4" = 1'-0"



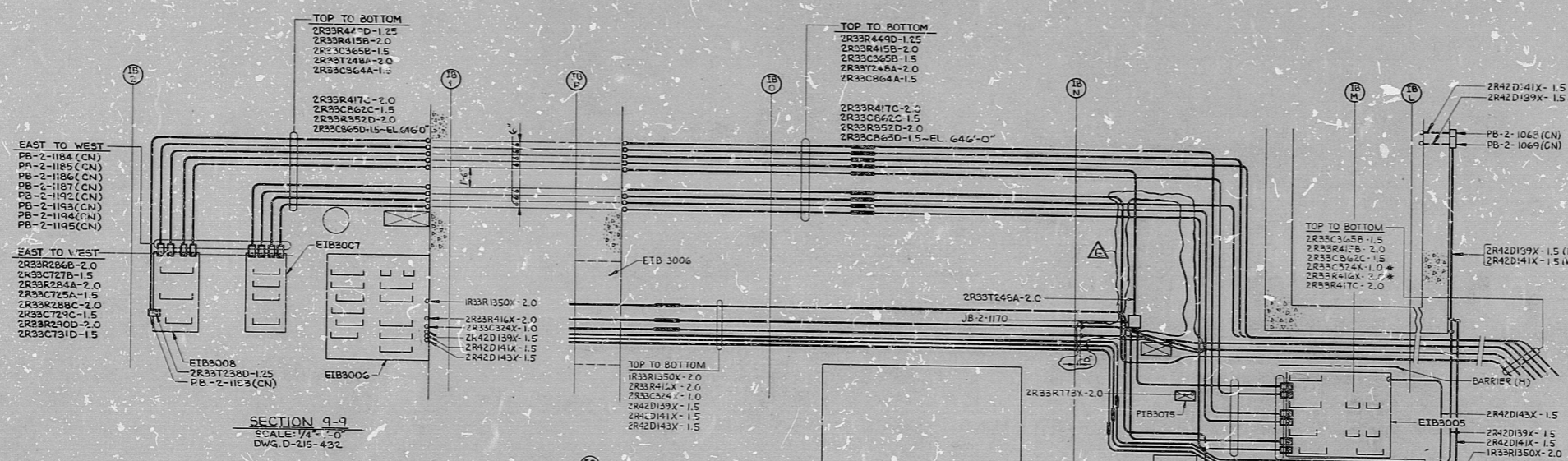
SECTION 6-6
D-215-481

SECTION 6-6 VALVE CHART

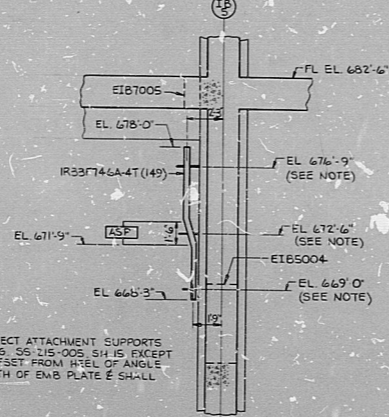
VALVE #	SOLENOID #	PRESSURE SW #	LIMIT SW #
IP54-F3260	IP54-F3261	IP54-N3265	IP54-N3261
	IP54-C60X-75	IR33C4455X-1.0	
		IP54C245X-75L	IP54C244X-75L
IP54-F3250	IP54-F3251	IP54-N3255	IP54-N3251
	IP54-C70X-75	IR33C4456X-1.0	
		IP54C245X-75L	IP54C240X-75L
IP54-F3240	IP54-F3241	IP54-N3245	IP54-N3241
	IP54-C70X-75	IR33C4457X-1.0	
		IP54C245X-75L	IP54C242X-75L
IP54-F3230	IP54-F3231	IP54-N3235	IP54-N3231
	IP54-C70X-75	IR33C4458X-1.0	
		IP54C245X-75L	IP54C238X-75L
IP54-F3220	IP54-F3221	IP54-N3225	IP54-N3221
	IP54-C70X-75	IR33C4459X-1.0	
		IP54C245X-75L	IP54C247X-75L
IP54-F3210	IP54-F3211	IP54-N3215	IP54-N3211
	IP54-C70X-75	IR33C4460X-1.0	
		IP54C245X-75L	IP54C242X-75L
IP54-F3200	IP54-F3201	IP54-N3205	IP54-N3201
	IP54-C70X-75	IR33C4461X-1.0	
		IP54C245X-75L	IP54C242X-75L
IP54-F3100	IP54-F3101	IP54-N3105	IP54-N3101
	IP54-C70X-75	IR33C4462X-1.0	
		IP54C245X-75L	IP54C242X-75L

SECTION 7-7 VALVE CHART

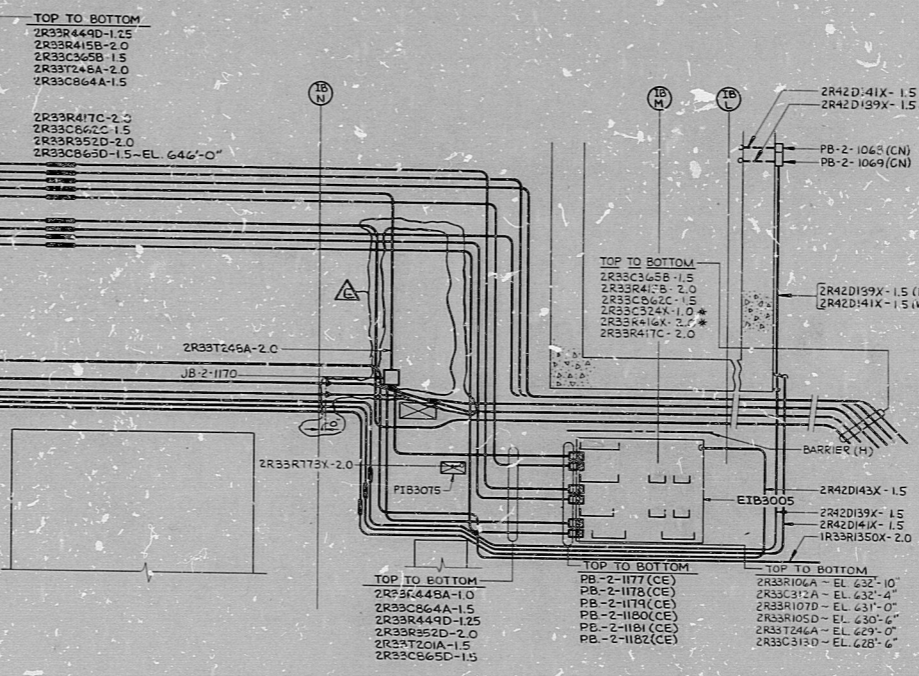
VALVE #	SOLENOID #	PRESSURE SW #	LIMIT SW #
2P54-F3250	2P54-F3251	2P54-N3255	2P54-N3251
	2P54-C70X-75	2R33C621X-1.0	
		2P54C245X-75L	2P54C240X-75L
2P54-F3260	2P54-F3261	2P54-N3265	2P54-N3261
	2P54-C70X-75	2R33C622X-1.0	
		2P54C245X-75L	2P54C244X-75L
2P54-F3270	2P54-F3271	2P54-N3275	2P54-N3271
	2P54-C70X-75	2R33C623X-1.0	
		2P54C245X-75L	2P54C238X-75L
2P54-F3280	2P54-F3281	2P54-N3285	2P54-N3281
	2P54-C70X-75	2R33C624X-1.0	
		2P54C245X-75L	2P54C242X-75L
2P54-F3290	2P54-F3291	2P54-N3295	2P54-N3291
	2P54-C70X-75	2R33C625X-1.0	
		2P54C245X-75L	2P54C242X-75L
2P54-F3300	2P54-F3301	2P54-N3305	2P54-N3301
	2P54-C70X-75	2R33C626X-1.0	
		2P54C245X-75L	2P54C242X-75L



SECTION 9-3
SCALE: 1/4" = 1'-0"
DWG. D-215-432



DETAIL 'B'
LOOKING SOUTH
D-215-451, COORD. E11



SECTION 8-8
SCALE: 1/4" = 1'-0"
DWG. D-215-432

NOTES:
1. FOR LEGEND, NOTES, REFERENCES, AND STANDARD DETAILS, SEE DRAWING D-215-001.

REVISIONS AS INDICATED BY 3 PLACES

NO.	DATE	BY	REVISION
E	10/25/54	ME	REVISED PER ECN #1005
D	10/25/54	ME	REVISED PER ECN #1005
C	10/25/54	ME	REVISED PER ECN #1005
B	10/25/54	ME	REVISED PER ECN #1005
A	10/25/54	ME	REVISED PER ECN #1005

NUCLEAR SAFETY RELATED

CONSTRUCTION 5-33

LIMITED CONSTRUCTION: AS NOTED

PRELIMINARY NOT FOR CONSTRUCTION

BIDDING PURPOSES

DATE RELEASED FOR: ENGR.

THE CLEVELAND ELECTRIC ILLUMINATING COMPANY

GENCO NUCLEAR POWER PLANT UNITS 1 & 2

ELECTRICAL

CONDUIT LAYOUT

INTERMEDIATE BUILDING SECTIONS (X) DETAILS

DRAWING NO. GILBERT ASSOCIATES, INC.

ENGINEERS AND CONSTRUCTORS

SCALE: 1/4" = 1'-0"

DATE: 04-4549

D-215-671

REV

INTER-BLOCK SECTIONS & DETAILS

RIDS

82-2100357

