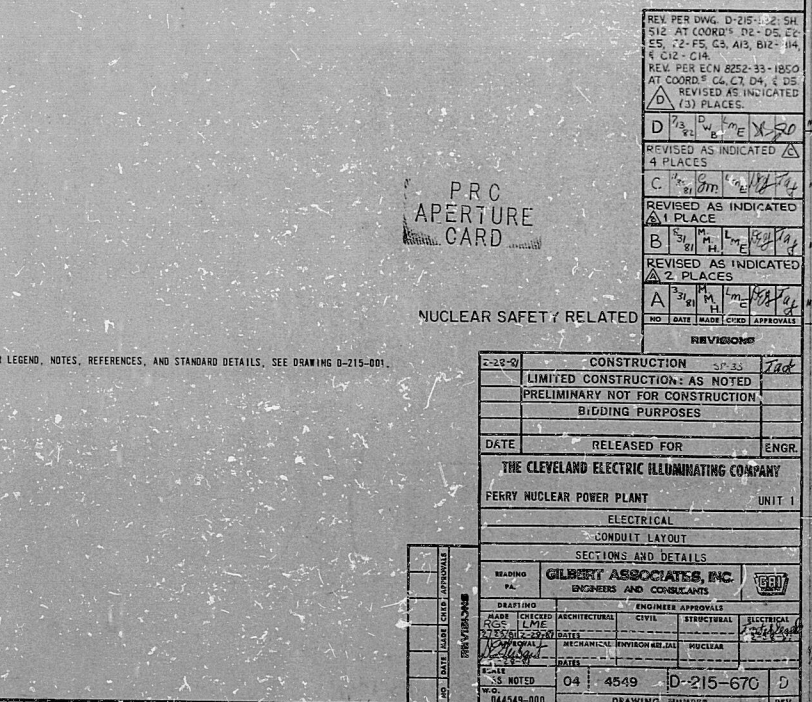
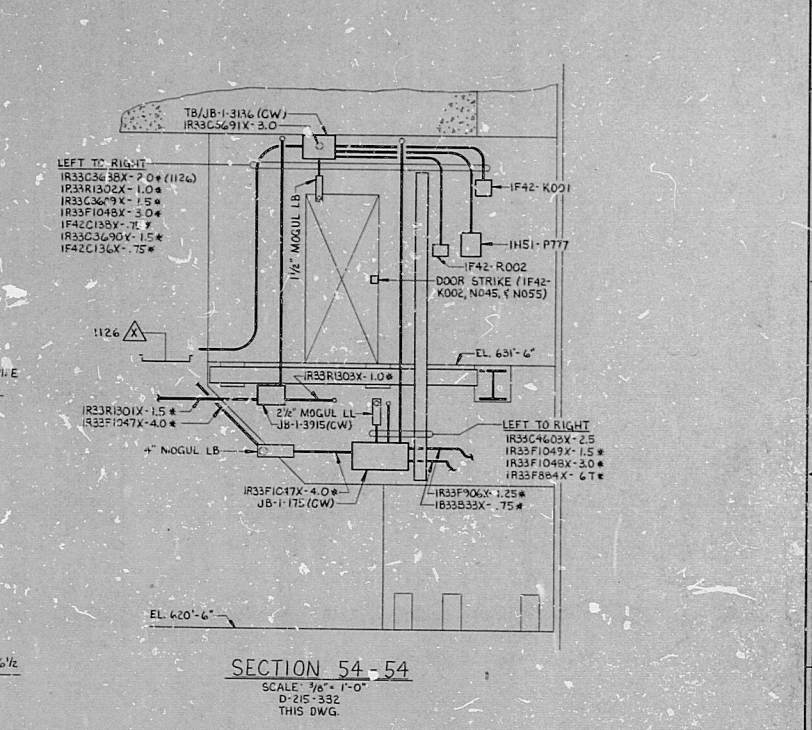
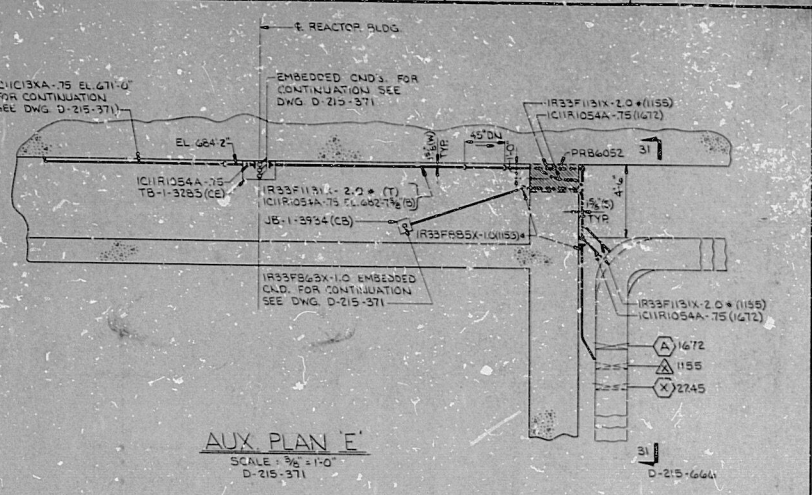
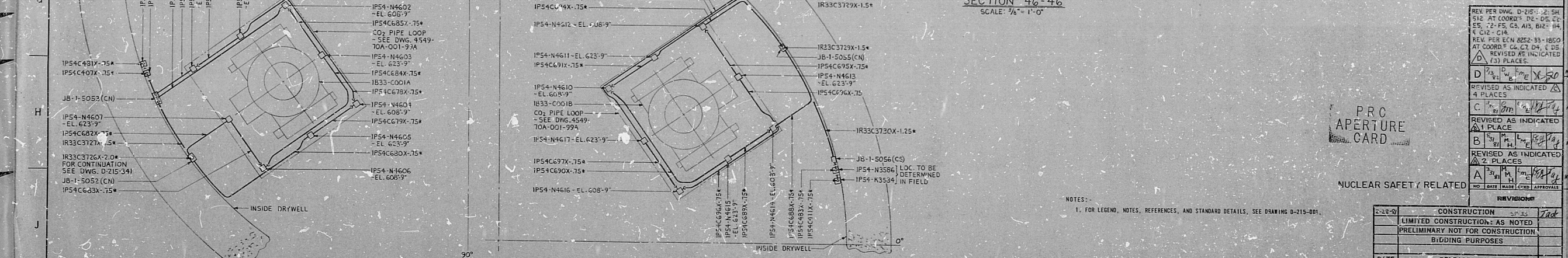
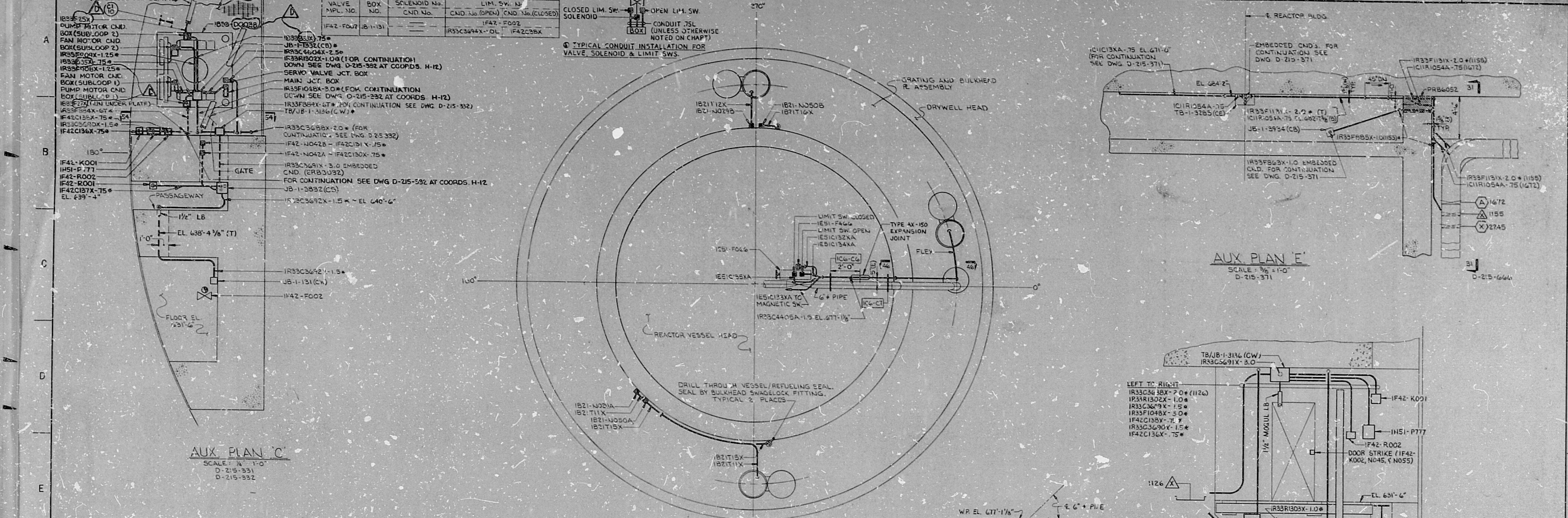


14 13 12 11 10 9 8 7 6 5 4 3 2 1



NOTES:
1. FOR LEGEND, NOTES, REFERENCES, AND STANDARD DETAILS, SEE DRAWING D-215-001.

PRO APERTURE CARD

NUCLEAR SAFETY RELATED

NO.	DATE	DESCRIPTION	BY	CHKD.
1		CONSTRUCTION		
2		LIMITED CONSTRUCTION AS NOTED		
3		PRELIMINARY NOT FOR CONSTRUCTION		
4		BIDDING PURPOSES		
5		DATE	RELEASED FOR	ENGR.
THE CLEVELAND ELECTRIC ILLUMINATING COMPANY				
PERRY NUCLEAR POWER PLANT UNIT 1				
ELECTRICAL				
CONDUIT LAYOUT				
SECTION AND DETAILS				
DRAWING NO. GILBERT ASSOCIATES, INC.				
ENGINEERS AND CONSULTANTS				
DATE	DATE	DATE	DATE	DATE
DESIGNED	CHECKED	ARCHITECTURAL	CIVIL	MECHANICAL
DRAWN	APPROVED	MECHANICAL	MECHANICAL	MECHANICAL
DATE	DATE	DATE	DATE	DATE
NOTED	04	4549	D-215-670	D
04549-000	DRAWING NUMBER		REV	

RIDS

82-210-0354

