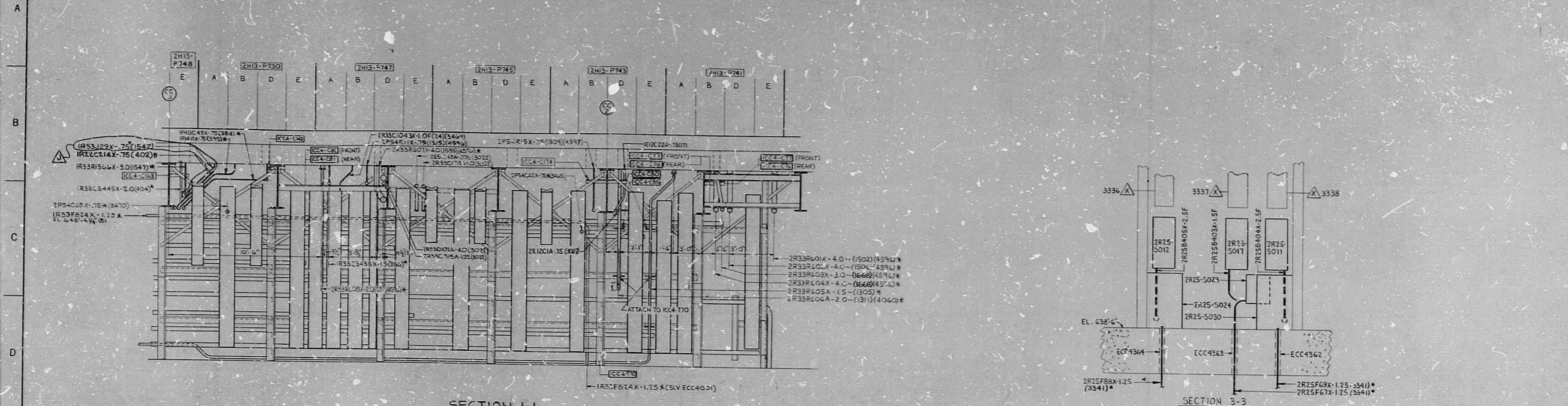
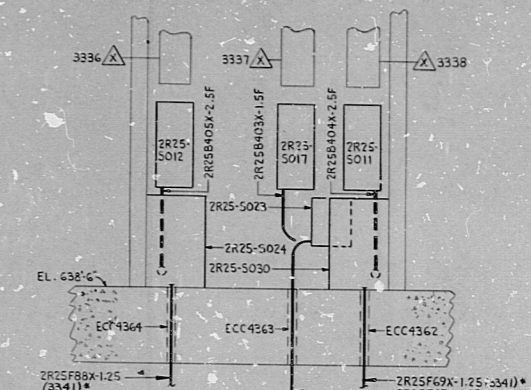


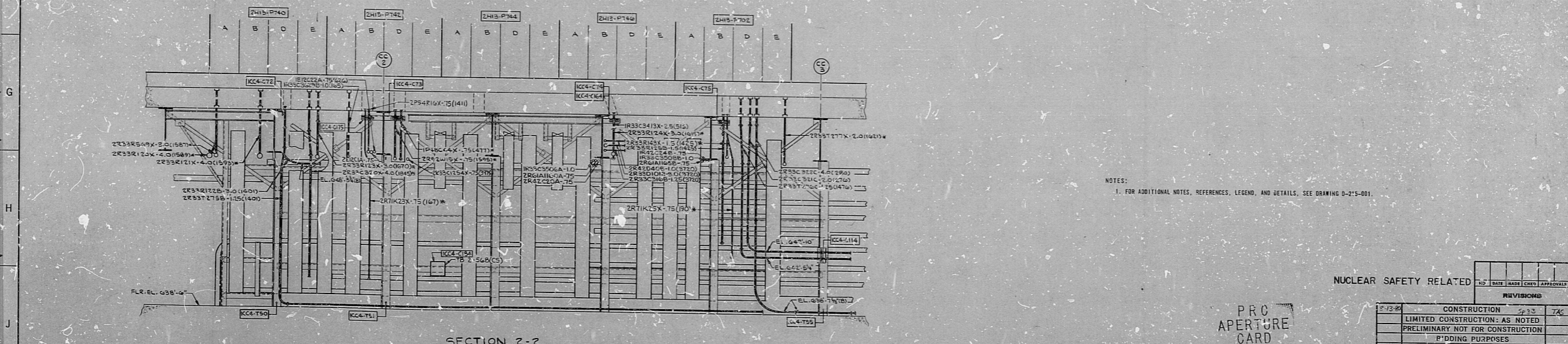
14 13 12 11 10 9 8 7 6 5 4 3 2 1



SECTION 1-1
DWG. D-215-142, (CO-ORD. B.1)
SCALE: 1/4" = 1'-0"



SECTION 3-3
DWG. D-215-142, (CO-ORD. B.1)
SCALE: 1/4" = 1'-0"



SECTION 2-2
DWG. D-215-142, (CO-ORD. B.1)
SCALE: 1/4" = 1'-0"

NOTES:
1. FOR ADDITIONAL NOTES, REFERENCES, LEGEND, AND DETAILS, SEE DRAWING D-215-001.

PRO APERTURE CARD

NUCLEAR SAFETY RELATED

REVISIONS	
NO.	DATE
1	7-31-68
2	8-23-68
3	9-10-68

CONSTRUCTION	AS NOTED
LIMITED CONSTRUCTION	AS NOTED
PRELIMINARY NOT FOR CONSTRUCTION	PENDING PURPOSES
DATE	RELEASED FOR
THE CLEVELAND ELECTRIC ILLUMINATING COMPANY	
PERRY NUCLEAR POWER PLANT	
ELECTRICAL	
CONDUIT LAYOUT	
CONTROL COMPLEX - SECTIONS AND DETAILS	
ENGINEER'S APPROVAL	
GILBERT ASSOCIATES, INC.	
ENGINEERS AND CONSULTANTS	
DATE	APPROVED
DESIGNED	APPROVED
DRAWN	APPROVED
CHECKED	APPROVED
IN CHARGE	APPROVED
DATE	APPROVED
AS NOTED	04 4549 D-215-663 J
DRAWING NUMBER	REV

REVISION	DATE	BY	DESCRIPTION
1	7-31-68	[Signature]	ISSUED FOR CONSTRUCTION
2	8-23-68	[Signature]	REVISIONS
3	9-10-68	[Signature]	REVISIONS

RIDS

82.1210 0341

