

34

34

22

22

17

17

11

11

9.5

9.5

8.5

8.5

11

11

17

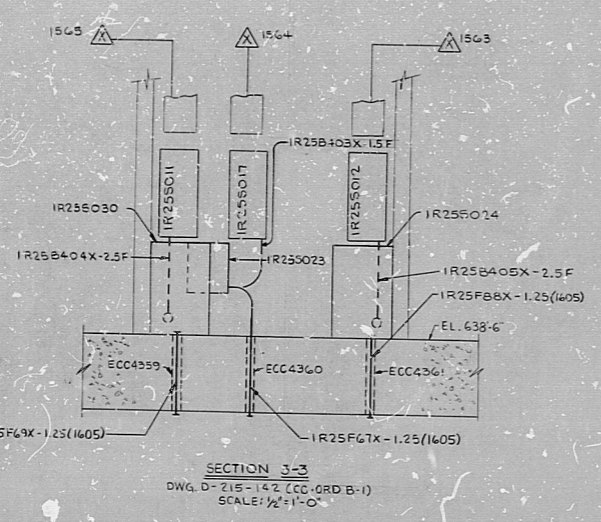
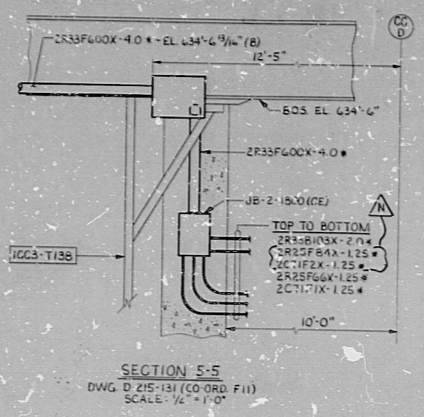
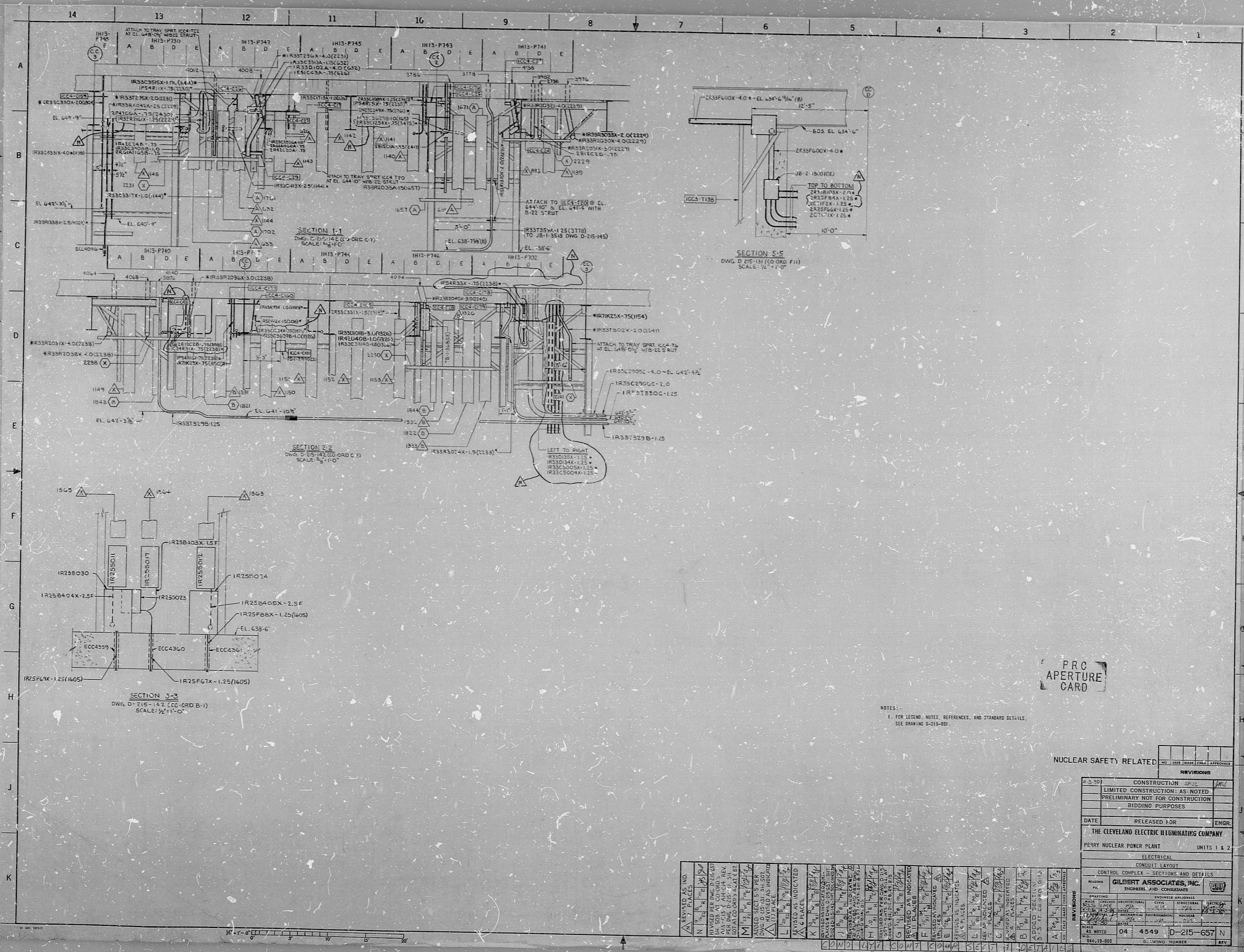
17

22

22

34

34



PRC APERTURE CARD

NOTES: 1. FOR LEGEND, NOTES, REFERENCES, AND STANDARD DET-115, SEE DRAWING D-215-001.

| REVISIONS | | NO. | DATE | BY | CHKD. | APPROVAL |
|-----------|----------------------------------|-----|------|-----------|-------|----------|
| 1 | CONSTRUCTION | 04 | 4549 | D-215-657 | N | |
| 2 | LIMITED CONSTRUCTION: AS NOTED | | | | | |
| 3 | PRELIMINARY NOT FOR CONSTRUCTION | | | | | |
| 4 | BIDDING PURPOSES | | | | | |

DATE: RELEASED FOR ENGR

THE CLEVELAND ELECTRIC ILLUMINATING COMPANY

PERRY NUCLEAR POWER PLANT UNITS 1 & 2

ELECTRICAL

CONDUIT LAYOUT

CONTROL COMPLEX - SECTIONS AND DETAILS

READING: GILBERT ASSOCIATES, INC. ENGINEERS AND CONSULTANTS

DATE: 04 4549 D-215-657 N

NO: 044-19-000 DRAWING NUMBER REV

| REV. | BY | DATE | DESCRIPTION |
|------|----|----------|----------------------------|
| 1 | N | 04/15/67 | REVISED PER DWG. D-215-001 |
| 2 | B | 04/15/67 | REVISED PER DWG. D-215-001 |
| 3 | B | 04/15/67 | REVISED PER DWG. D-215-001 |
| 4 | B | 04/15/67 | REVISED PER DWG. D-215-001 |
| 5 | B | 04/15/67 | REVISED PER DWG. D-215-001 |
| 6 | B | 04/15/67 | REVISED PER DWG. D-215-001 |
| 7 | B | 04/15/67 | REVISED PER DWG. D-215-001 |
| 8 | B | 04/15/67 | REVISED PER DWG. D-215-001 |
| 9 | B | 04/15/67 | REVISED PER DWG. D-215-001 |
| 10 | B | 04/15/67 | REVISED PER DWG. D-215-001 |
| 11 | B | 04/15/67 | REVISED PER DWG. D-215-001 |
| 12 | B | 04/15/67 | REVISED PER DWG. D-215-001 |
| 13 | B | 04/15/67 | REVISED PER DWG. D-215-001 |
| 14 | B | 04/15/67 | REVISED PER DWG. D-215-001 |
| 15 | B | 04/15/67 | REVISED PER DWG. D-215-001 |
| 16 | B | 04/15/67 | REVISED PER DWG. D-215-001 |
| 17 | B | 04/15/67 | REVISED PER DWG. D-215-001 |
| 18 | B | 04/15/67 | REVISED PER DWG. D-215-001 |
| 19 | B | 04/15/67 | REVISED PER DWG. D-215-001 |
| 20 | B | 04/15/67 | REVISED PER DWG. D-215-001 |
| 21 | B | 04/15/67 | REVISED PER DWG. D-215-001 |
| 22 | B | 04/15/67 | REVISED PER DWG. D-215-001 |
| 23 | B | 04/15/67 | REVISED PER DWG. D-215-001 |
| 24 | B | 04/15/67 | REVISED PER DWG. D-215-001 |
| 25 | B | 04/15/67 | REVISED PER DWG. D-215-001 |
| 26 | B | 04/15/67 | REVISED PER DWG. D-215-001 |
| 27 | B | 04/15/67 | REVISED PER DWG. D-215-001 |
| 28 | B | 04/15/67 | REVISED PER DWG. D-215-001 |
| 29 | B | 04/15/67 | REVISED PER DWG. D-215-001 |
| 30 | B | 04/15/67 | REVISED PER DWG. D-215-001 |
| 31 | B | 04/15/67 | REVISED PER DWG. D-215-001 |
| 32 | B | 04/15/67 | REVISED PER DWG. D-215-001 |
| 33 | B | 04/15/67 | REVISED PER DWG. D-215-001 |
| 34 | B | 04/15/67 | REVISED PER DWG. D-215-001 |
| 35 | B | 04/15/67 | REVISED PER DWG. D-215-001 |
| 36 | B | 04/15/67 | REVISED PER DWG. D-215-001 |
| 37 | B | 04/15/67 | REVISED PER DWG. D-215-001 |
| 38 | B | 04/15/67 | REVISED PER DWG. D-215-001 |
| 39 | B | 04/15/67 | REVISED PER DWG. D-215-001 |
| 40 | B | 04/15/67 | REVISED PER DWG. D-215-001 |
| 41 | B | 04/15/67 | REVISED PER DWG. D-215-001 |
| 42 | B | 04/15/67 | REVISED PER DWG. D-215-001 |
| 43 | B | 04/15/67 | REVISED PER DWG. D-215-001 |
| 44 | B | 04/15/67 | REVISED PER DWG. D-215-001 |
| 45 | B | 04/15/67 | REVISED PER DWG. D-215-001 |
| 46 | B | 04/15 | |

RIDS

8212100326

