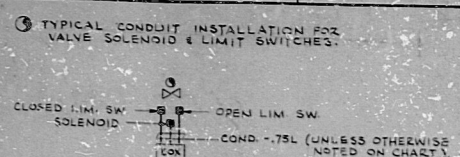
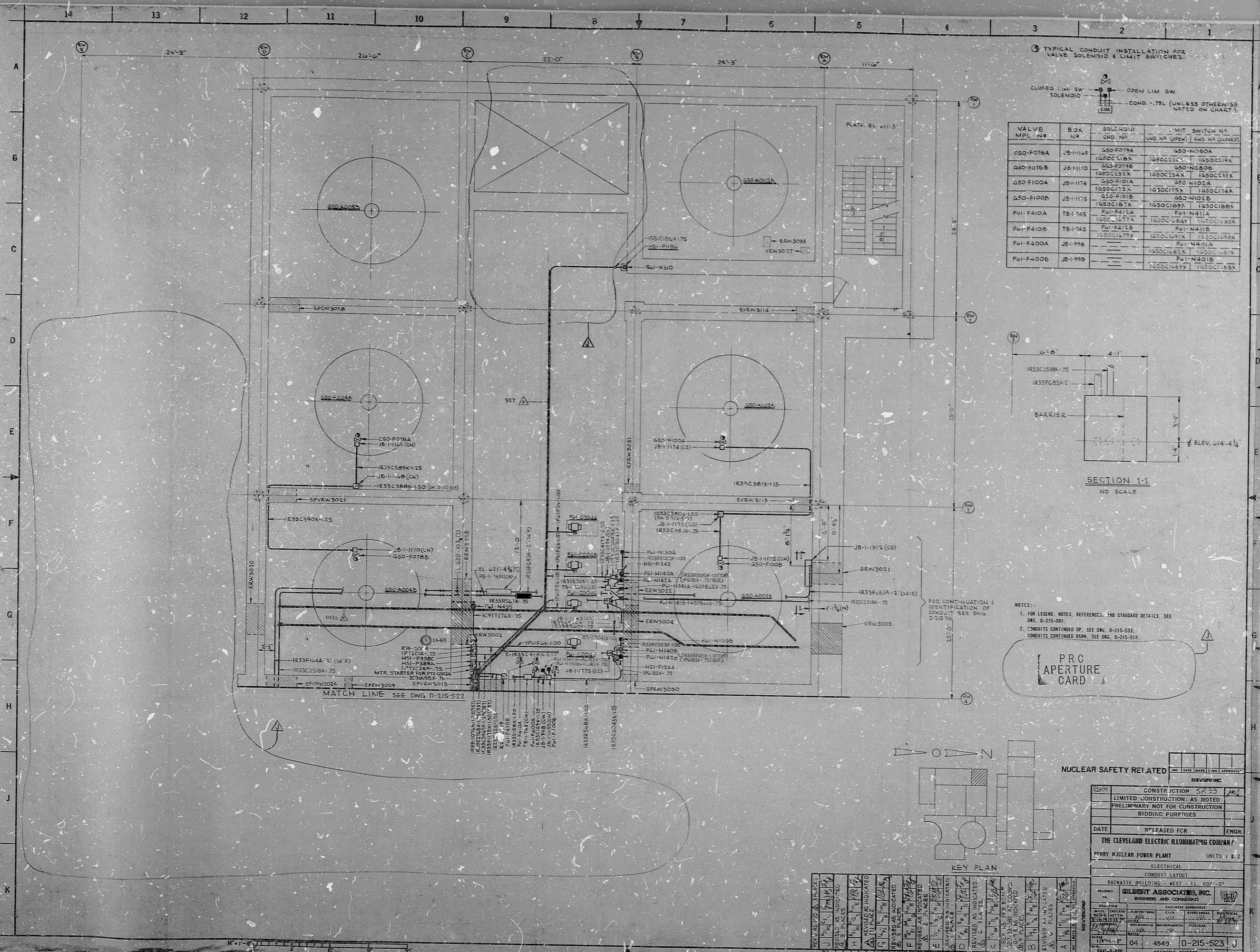
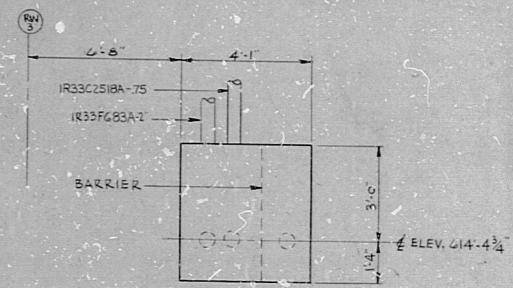


34
22
17
11
8.5
11
8.5
11
17
22

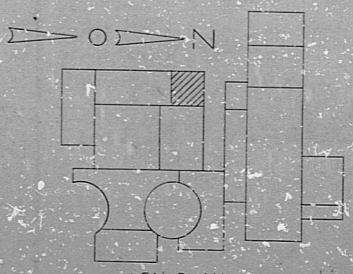


VALVE MPL. NR.	BOX NR.	SOLENOID CND. NR.	LIMIT SWITCH NR. (CND. NR. (OPEN) CND. NR. (CLOSED))
G50-F076A	JB-1149	G50-F076A	G50-N080A
G50-F076B	JB-1110	G50-F076B	G50-N080B
G50-F100A	JB-11174	G50-F100A	G50-N102A
G50-F100B	JB-11175	G50-F100B	G50-N102B
P41-F410A	TS-1745	P41-F410A	G50-N102B
P41-F410B	TS-1745	P41-F410B	G50-N102B
P41-F400A	JB-1998	P41-F400A	G50-N102B
P41-F400B	JB-1998	P41-F400B	G50-N102B



- NOTES:
- FOR LEGEND, NOTES, REFERENCES, AND STANDARD DETAILS, SEE DWG. D-215-501.
 - CONDUITS CONTINUED UP, SEE DWG. D-215-523.
 - CONDUITS CONTINUED DOWN, SEE DWG. D-215-510.

PRC APERTURE CARD



NUCLEAR SAFETY RELATED

NO.	DATE	BY	CHKD.	APPROVED
04	5/29/59	JM		

CONSTRUCTION SP-33
LIMITED CONSTRUCTION - AS NOTED
PRELIMINARY NOT FOR CONSTRUCTION
BIDDING PURPOSES

DATE: 5/29/59
PROJECT: THE CLEVELAND ELECTRIC ILLUMINATING COMPANY
SPERRY NUCLEAR POWER PLANT
UNITS 1 & 2

ELECTRICAL
CONDUIT LAYOUT
RADWASTE BUILDING - WEST - EL. 602'-0"

DESIGNED BY: GILBERT ASSOCIATES, INC.
ENGINEERS AND CONSULTANTS

NO. 04 3549 D-215-523 J
DRAWING NUMBER

NO.	DATE	BY	CHKD.	APPROVED
04	5/29/59	JM		

REVISIONS AND STRAIGHTENING

NO. 04 3549 D-215-523 J
DRAWING NUMBER

RIDS

82-2100262

