

14 13 12 11 10 9 8 7 6 5 4 3 2 1

A B C D E F G H J K

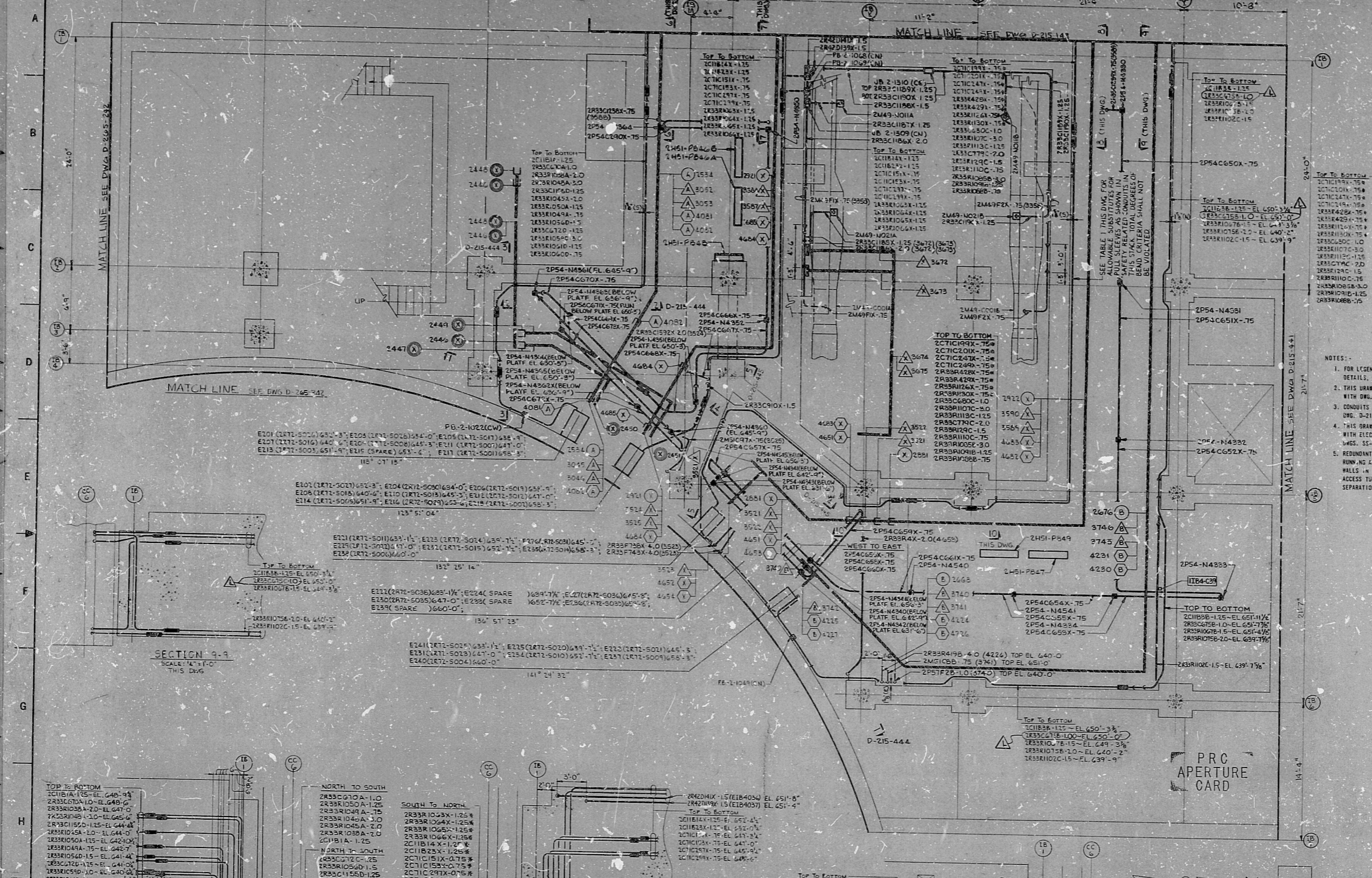
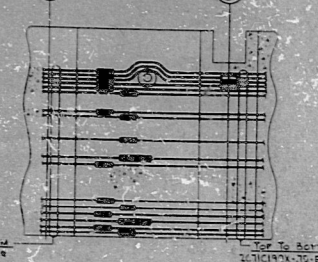
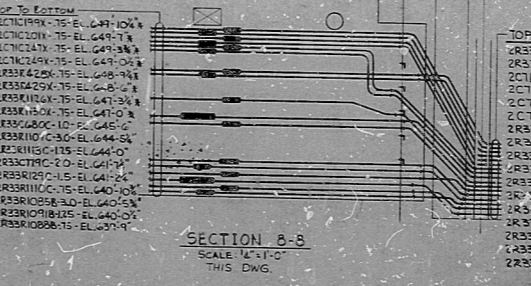
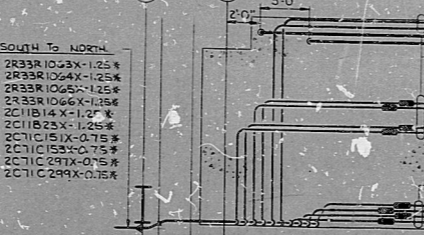
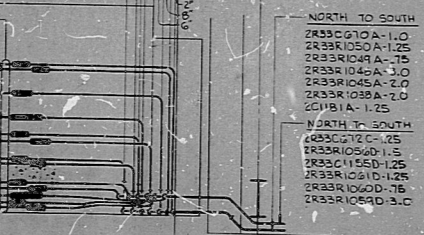
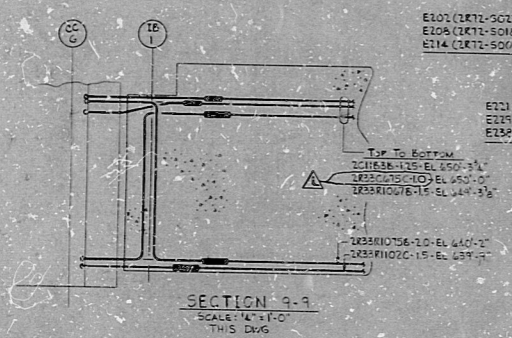


TABLE 1

CONDUIT NO. AND SIZE	MIN. SIZE 1" CONDUIT	MIN. SIZE 3/4" CONDUIT
2R33C600-1.0	1" STANDARD	3/4" MODUL
2R33R107C-3.0	3" STANDARD	3/4" STANDARD
2R33R113C-1.25	1 1/4" STANDARD	1 1/4" MODUL
2R33R125-2.0	2" STANDARD	2" STANDARD
2R33R110C-1.5	1 1/2" STANDARD	3/4" STANDARD
2R33R105B-3.0	3" STANDARD	3/4" STANDARD
2R33R109B-1.25	1 1/4" STANDARD	1 1/4" MODUL
2R33R108A-2.5	2 1/2" STANDARD	3/4" STANDARD
2R33R129C-1.5	1 1/2" BOX	1 1/2" BOX



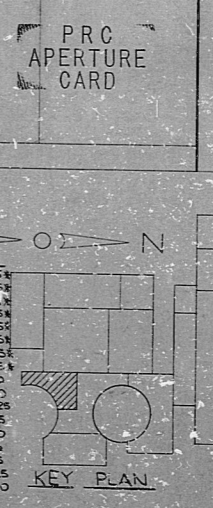
- NOTES:**
1. FOR LEGEND, NOTES, REFERENCES AND STANDARD DETAILS, SEE DWG. D-215-401.
 2. THIS DRAWING IS TO BE WORKED IN CONJUNCTION WITH DWG. D-215-444.
 3. CONDUITS FORMING JOINTS, CONTINUED ON DWG. D-215-442.
 4. THIS DRAWING IS TO BE WORKED IN CONJUNCTION WITH ELECTRICAL CONDUIT SUPPORT DWGS. SE-215-442, SHEETS C23 THROUGH C39.
 5. REPAIRMENT DIVISION CONDUITS AND CONDUITS RUN TO BE CONSIDERED A REDUNDANT TRAY ON THE WALLS IN THE DIVISION I AND II PENETRATION ACCESS TUNNELS MAY HAVE 1" MINIMUM SEPARATION.

REVISIONS

NO.	DATE	DESCRIPTION
1		REVISED AS INDICATED
2		REVISED AS INDICATED
3		REVISED AS INDICATED
4		REVISED AS INDICATED
5		REVISED AS INDICATED
6		REVISED AS INDICATED
7		REVISED AS INDICATED
8		REVISED AS INDICATED
9		REVISED AS INDICATED
10		REVISED AS INDICATED
11		REVISED AS INDICATED
12		REVISED AS INDICATED

NUCLEAR SAFETY RELATED

NO.	DESCRIPTION	DATE
1	CONSTRUCTION	SP-35
2	LIMITED CONSTRUCTION - AS NOTED	
3	PRELIMINARY NOT FOR CONSTRUCTION	
4	BIDDING PURPOSES	
5	RELEASED FOR	ENGR.
THE CLEVELAND ELECTRIC ILLUMINATING COMPANY		
PERRY NUCLEAR POWER PLANT - UNIT 1 & 2		
ELECTRICAL		
CONDUIT LAYOUT		
INTERMEDIATE BUILDING - SOUTH - EL. 639'-6"		
DRAWING NO. 09 1849		
DRAWING NUMBER 09 1849		
DATE 11/20/83		
SCALE 1/2" = 1'-0"		



CONSTRUCTION 11/20/83 SOUTH EL 639'-6"

8212100191

RIDS

