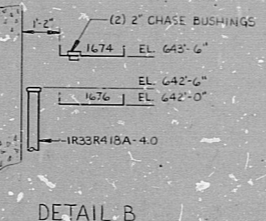
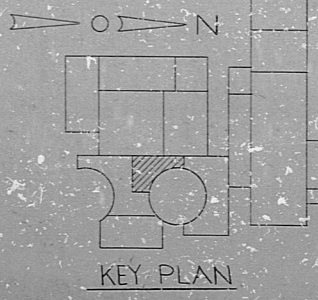


CHART A  
TOP TO BOTTOM  
IR33R145-1.5  
IR33R200-2.0  
IR33R210-2.0  
IR33R230-1.0  
IR33R240-3.0  
IR33R250-1.0  
IR33R260-1.0  
IR33R270-1.0  
IR33R280-1.0  
IR33R290-1.0  
IR33R300-1.0  
IR33R310-1.0  
IR33R320-1.0  
IR33R330-1.0  
IR33R340-1.0  
IR33R350-1.0  
IR33R360-1.0  
IR33R370-1.0  
IR33R380-1.0  
IR33R390-1.0  
IR33R400-1.0  
IR33R410-1.0  
IR33R420-1.0  
IR33R430-1.0  
IR33R440-1.0  
IR33R450-1.0  
IR33R460-1.0  
IR33R470-1.0  
IR33R480-1.0  
IR33R490-1.0  
IR33R500-1.0  
IR33R510-1.0  
IR33R520-1.0  
IR33R530-1.0  
IR33R540-1.0  
IR33R550-1.0  
IR33R560-1.0  
IR33R570-1.0  
IR33R580-1.0  
IR33R590-1.0  
IR33R600-1.0  
IR33R610-1.0  
IR33R620-1.0  
IR33R630-1.0  
IR33R640-1.0  
IR33R650-1.0  
IR33R660-1.0  
IR33R670-1.0  
IR33R680-1.0  
IR33R690-1.0  
IR33R700-1.0  
IR33R710-1.0  
IR33R720-1.0  
IR33R730-1.0  
IR33R740-1.0  
IR33R750-1.0  
IR33R760-1.0  
IR33R770-1.0  
IR33R780-1.0  
IR33R790-1.0  
IR33R800-1.0  
IR33R810-1.0  
IR33R820-1.0  
IR33R830-1.0  
IR33R840-1.0  
IR33R850-1.0  
IR33R860-1.0  
IR33R870-1.0  
IR33R880-1.0  
IR33R890-1.0  
IR33R900-1.0  
IR33R910-1.0  
IR33R920-1.0  
IR33R930-1.0  
IR33R940-1.0  
IR33R950-1.0  
IR33R960-1.0  
IR33R970-1.0  
IR33R980-1.0  
IR33R990-1.0  
IR33R000-1.0

- NOTES:
1. FOR LEGEND, NOTES, REFERENCES, AND STANDARD DETAILS, SEE DWG. D-215-001.
  2. THIS DRAWING IS TO BE WORKED IN CONJUNCTION WITH DWG. D-215-443.
  3. ALL CONDUIT SHALL BE PLACED FROM TOP TO BOTTOM, UNLESS NOTED OTHERWISE.
  4. CONDUITS TURNING DOWN, CONTINUED ON DWG. D-215-441.
  5. THIS DRAWING IS TO BE WORKED IN CONJUNCTION WITH ELECTRICAL CONDUIT SUPPLY DWGS. SS-213-441, SHEETS C1 THROUGH C19.
  6. REDUNDANT DIVISION CONDUITS AND CONDUITS RUNNING ALONGSIDE A REDUNDANT TRAY ON THE WALLS IN DIVISION I AND DIVISION II PENETRATION ACCESS TUNNELS MAY HAVE 1" SEPARATION.



PRC APERTURE CARD



NUCLEAR SAFETY RELATED		NO.	DATE	BY	CHKD.	APPROVAL
REVISIONS						
1	CONSTRUCTION					
LIMITED CONSTRUCTION AS NOTED						
PRELIMINARY NOT FOR CONSTRUCTION						
BIDDING PURPOSES						
DATE	RELEASED FOR	ENGR.				
	THE CLEVELAND ELECTRIC ILLUMINATING COMPANY					
PERRY NUCLEAR POWER PLANT		UNITS 1 & 2				
ELECTRICAL						
CONDUIT LAYOUT						
INTERMEDIATE BUILDING - NORTH - EL. 639'-0"						
DRAWING NO. 4549 D-215-441 P						
DRAWING NUMBER						
REV.						

NO.	DATE	BY	CHKD.	APPROVAL
1	1/14/64	J. W. [unclear]	[unclear]	[unclear]
2	1/14/64	[unclear]	[unclear]	[unclear]
3	1/14/64	[unclear]	[unclear]	[unclear]
4	1/14/64	[unclear]	[unclear]	[unclear]
5	1/14/64	[unclear]	[unclear]	[unclear]
6	1/14/64	[unclear]	[unclear]	[unclear]
7	1/14/64	[unclear]	[unclear]	[unclear]
8	1/14/64	[unclear]	[unclear]	[unclear]
9	1/14/64	[unclear]	[unclear]	[unclear]
10	1/14/64	[unclear]	[unclear]	[unclear]
11	1/14/64	[unclear]	[unclear]	[unclear]
12	1/14/64	[unclear]	[unclear]	[unclear]
13	1/14/64	[unclear]	[unclear]	[unclear]
14	1/14/64	[unclear]	[unclear]	[unclear]
15	1/14/64	[unclear]	[unclear]	[unclear]
16	1/14/64	[unclear]	[unclear]	[unclear]
17	1/14/64	[unclear]	[unclear]	[unclear]
18	1/14/64	[unclear]	[unclear]	[unclear]
19	1/14/64	[unclear]	[unclear]	[unclear]
20	1/14/64	[unclear]	[unclear]	[unclear]
21	1/14/64	[unclear]	[unclear]	[unclear]
22	1/14/64	[unclear]	[unclear]	[unclear]
23	1/14/64	[unclear]	[unclear]	[unclear]
24	1/14/64	[unclear]	[unclear]	[unclear]
25	1/14/64	[unclear]	[unclear]	[unclear]
26	1/14/64	[unclear]	[unclear]	[unclear]
27	1/14/64	[unclear]	[unclear]	[unclear]
28	1/14/64	[unclear]	[unclear]	[unclear]
29	1/14/64	[unclear]	[unclear]	[unclear]
30	1/14/64	[unclear]	[unclear]	[unclear]
31	1/14/64	[unclear]	[unclear]	[unclear]
32	1/14/64	[unclear]	[unclear]	[unclear]
33	1/14/64	[unclear]	[unclear]	[unclear]
34	1/14/64	[unclear]	[unclear]	[unclear]
35	1/14/64	[unclear]	[unclear]	[unclear]
36	1/14/64	[unclear]	[unclear]	[unclear]
37	1/14/64	[unclear]	[unclear]	[unclear]
38	1/14/64	[unclear]	[unclear]	[unclear]
39	1/14/64	[unclear]	[unclear]	[unclear]
40	1/14/64	[unclear]	[unclear]	[unclear]
41	1/14/64	[unclear]	[unclear]	[unclear]
42	1/14/64	[unclear]	[unclear]	[unclear]
43	1/14/64	[unclear]	[unclear]	[unclear]
44	1/14/64	[unclear]	[unclear]	[unclear]
45	1/14/64	[unclear]	[unclear]	[unclear]
46	1/14/64	[unclear]	[unclear]	[unclear]
47	1/14/64	[unclear]	[unclear]	[unclear]
48	1/14/64	[unclear]	[unclear]	[unclear]
49	1/14/64	[unclear]	[unclear]	[unclear]
50	1/14/64	[unclear]	[unclear]	[unclear]
51	1/14/64	[unclear]	[unclear]	[unclear]
52	1/14/64	[unclear]	[unclear]	[unclear]
53	1/14/64	[unclear]	[unclear]	[unclear]
54	1/14/64	[unclear]	[unclear]	[unclear]
55	1/14/64	[unclear]	[unclear]	[unclear]
56	1/14/64	[unclear]	[unclear]	[unclear]
57	1/14/64	[unclear]	[unclear]	[unclear]
58	1/14/64	[unclear]	[unclear]	[unclear]
59	1/14/64	[unclear]	[unclear]	[unclear]
60	1/14/64	[unclear]	[unclear]	[unclear]
61	1/14/64	[unclear]	[unclear]	[unclear]
62	1/14/64	[unclear]	[unclear]	[unclear]
63	1/14/64	[unclear]	[unclear]	[unclear]
64	1/14/64	[unclear]	[unclear]	[unclear]
65	1/14/64	[unclear]	[unclear]	[unclear]
66	1/14/64	[unclear]	[unclear]	[unclear]
67	1/14/64	[unclear]	[unclear]	[unclear]
68	1/14/64	[unclear]	[unclear]	[unclear]
69	1/14/64	[unclear]	[unclear]	[unclear]
70	1/14/64	[unclear]	[unclear]	[unclear]
71	1/14/64	[unclear]	[unclear]	[unclear]
72	1/14/64	[unclear]	[unclear]	[unclear]
73	1/14/64	[unclear]	[unclear]	[unclear]
74	1/14/64	[unclear]	[unclear]	[unclear]
75	1/14/64	[unclear]	[unclear]	[unclear]
76	1/14/64	[unclear]	[unclear]	[unclear]
77	1/14/64	[unclear]	[unclear]	[unclear]
78	1/14/64	[unclear]	[unclear]	[unclear]
79	1/14/64	[unclear]	[unclear]	[unclear]
80	1/14/64	[unclear]	[unclear]	[unclear]
81	1/14/64	[unclear]	[unclear]	[unclear]
82	1/14/64	[unclear]	[unclear]	[unclear]
83	1/14/64	[unclear]	[unclear]	[unclear]
84	1/14/64	[unclear]	[unclear]	[unclear]
85	1/14/64	[unclear]	[unclear]	[unclear]
86	1/14/64	[unclear]	[unclear]	[unclear]
87	1/14/64	[unclear]	[unclear]	[unclear]
88	1/14/64	[unclear]	[unclear]	[unclear]
89	1/14/64	[unclear]	[unclear]	[unclear]
90	1/14/64	[unclear]	[unclear]	[unclear]
91	1/14/64	[unclear]	[unclear]	[unclear]
92	1/14/64	[unclear]	[unclear]	[unclear]
93	1/14/64	[unclear]	[unclear]	[unclear]
94	1/14/64	[unclear]	[unclear]	[unclear]
95	1/14/64	[unclear]	[unclear]	[unclear]
96	1/14/64	[unclear]	[unclear]	[unclear]
97	1/14/64	[unclear]	[unclear]	[unclear]
98	1/14/64	[unclear]	[unclear]	[unclear]
99	1/14/64	[unclear]	[unclear]	[unclear]
100	1/14/64	[unclear]	[unclear]	[unclear]

RIDS

8212100190

