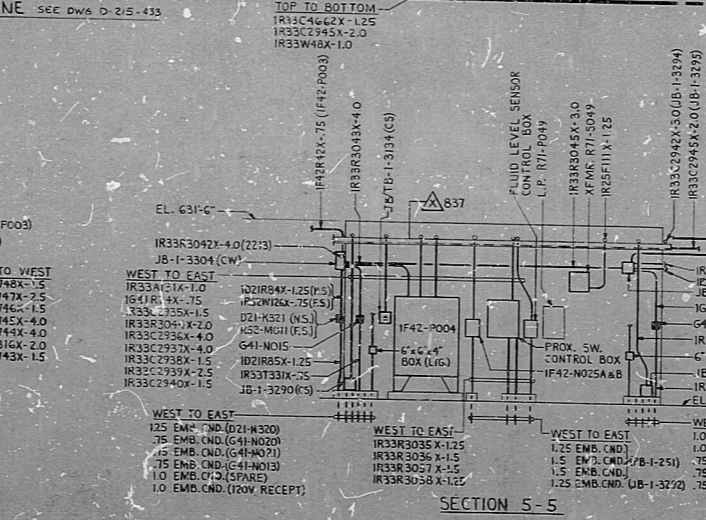
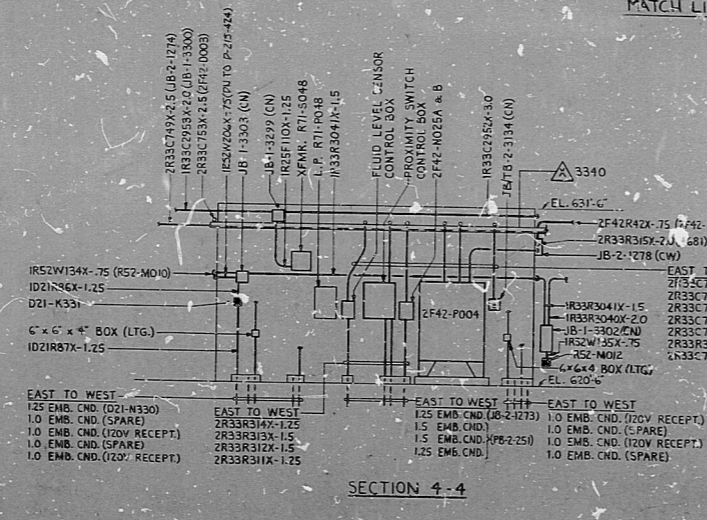


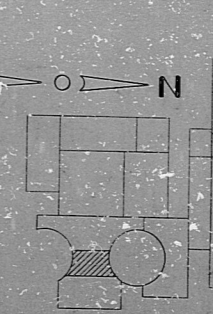
NOTE: 120V RECEP. ARE FOR UNDERWATER LIGHTING -- SEE DWG. D-220-434. 480V RECEP. ARE FOR JIB CRANES, FI-EDIB & FI-EDIC.

VALVE MPL NO.	BOX NO.	SOLENOID NO.	LIM. SW. NO.
G41-F045	1B-1-35	G41-F047	G41-N046
		1G41C23X	1G41C22X

NOTES:
1. FOR LEGEND, NOTES, REFERENCES, AND DETAILS, SEE DWG. D-215-401.
2. CONDUITS CONTINUED DOWN, SEE DWG. D-215-424.



PRO APERTURE CARD



NUCLEAR SAFETY RELATED

3-17-58	CONSTRUCTION	5A-2.3	AP
	LIMITED CONSTRUCTION: AS NOTED		
	PRELIMINARY NOT FOR CONSTRUCTION		
	BIDDING PURPOSES		
DATE:	RELEASED FOR:	EMGR.	
THE CLEVELAND ELECTRIC ILLUMINATING COMPANY			
PERRY NUCLEAR POWER PLANT UNITS 1 & 2			
ELECTRICAL CONDUIT LAYOUT			
FUEL HANDLING AREA - WEST - E. 620'			
REVISION	DATE	BY	APPROVED
1			
2			
3			
4			
5			
6			
7			
8			
9			
10			
11			
12			
13			
14			
15			
16			
17			
18			
19			
20			
21			
22			
23			
24			
25			
26			
27			
28			
29			
30			
31			
32			
33			
34			
35			
36			
37			
38			
39			
40			
41			
42			
43			
44			
45			
46			
47			
48			
49			
50			
51			
52			
53			
54			
55			
56			
57			
58			
59			
60			
61			
62			
63			
64			
65			
66			
67			
68			
69			
70			
71			
72			
73			
74			
75			
76			
77			
78			
79			
80			
81			
82			
83			
84			
85			
86			
87			
88			
89			
90			
91			
92			
93			
94			
95			
96			
97			
98			
99			
100			

44 494 10-215-434 K
DRAWING NUMBER
REV

82-2100188

RIPS

