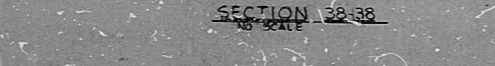
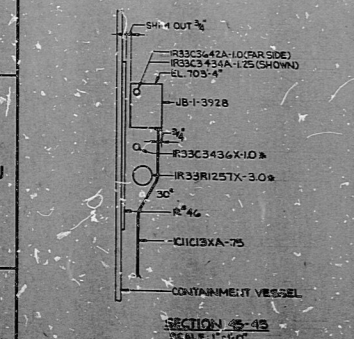
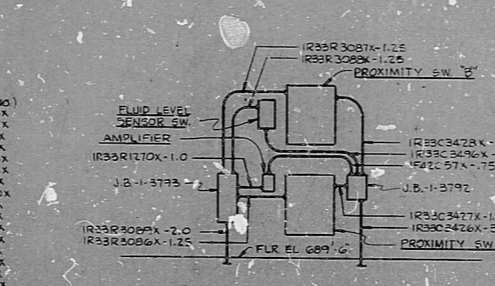
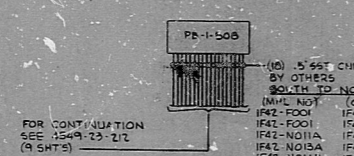
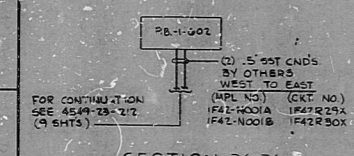


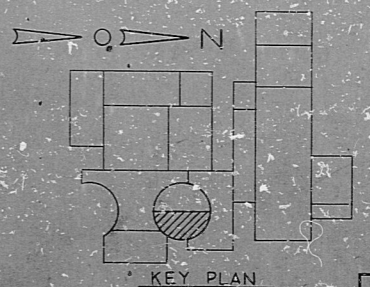
○ TYPICAL CONDUIT INSTALLATION
 ○ VALVE SOLENOID LIMIT SWITCHES
 ○ SOLENOID
 ○ CONDUIT - 75L (UNLESS OTHERWISE NOTED ON CHART)

VALVE MPL NO.	BOX NO.	SOLENOID CND. NO.	L.I.M. CND. NO. (OPEN) CND. NO. (CLOSED)	SW. NO.
IMIT-FOID	1815-1-6		IMIT-16A	IR33C3370A-1.0
IMIT-FOID	1815-1-7		IMIT-16B	IR33C3370A-1.0



- NOTES:
- FOR LEGEND, NOTES, REFERENCES, AND STANDARD DETAILS, SEE DWG. D-215-001.
 - CONDUITS CONTINUED DOWN, SEE DWG. D-215-381.
 - THIS DRAWING TO BE WORKED IN CONJUNCTION WITH THE FOLLOWING ELECTRICAL SUPPORT DRAWINGS:
 SS-215-371, SHEET C01
 SS-215-371, SHEET C02
 SS-215-371, SHEET C03
 SS-215-371, SHEET C06

P.P.C. APERTURE CARD



REVISIONS AS INDICATED

NO.	DATE	BY	DESCRIPTION
1			ISSUED AS INDICATED
2			REVISED AS INDICATED
3			REVISED AS INDICATED
4			REVISED AS INDICATED
5			REVISED AS INDICATED
6			REVISED AS INDICATED
7			REVISED AS INDICATED
8			REVISED AS INDICATED
9			REVISED AS INDICATED
10			REVISED AS INDICATED

NUCLEAR SAFETY RELATED
 REVISIONS APPROVED: _____
 DATE: _____

DATE	RELEASED FOR	REMARKS
	THE CLEVELAND ELECTRIC ILLUMINATING COMPANY	
	PERKY NUCLEAR POWER PLANT	UNIT 1
	ELECTRICAL	
	CREDIT LAYOUT	
	REACTOR BUILDING - EAST - EL. 608'-0"	
	DESIGNED BY: GLENN ASSOCIATES, INC.	
	CHECKED BY: _____	
	APPROVED BY: _____	
	DATE: _____	
	SCALE: 1/4" = 1'-0"	
	SHEET: C4 4840 H-215-371 D	
	DRAWN BY: _____	

COND. LTR. EAS. EL. 608'-0"

8212100146

RIDS

