

38

38

22

22

11

11

11

11

58

58

8.5

8.5

11

11

17

17

22

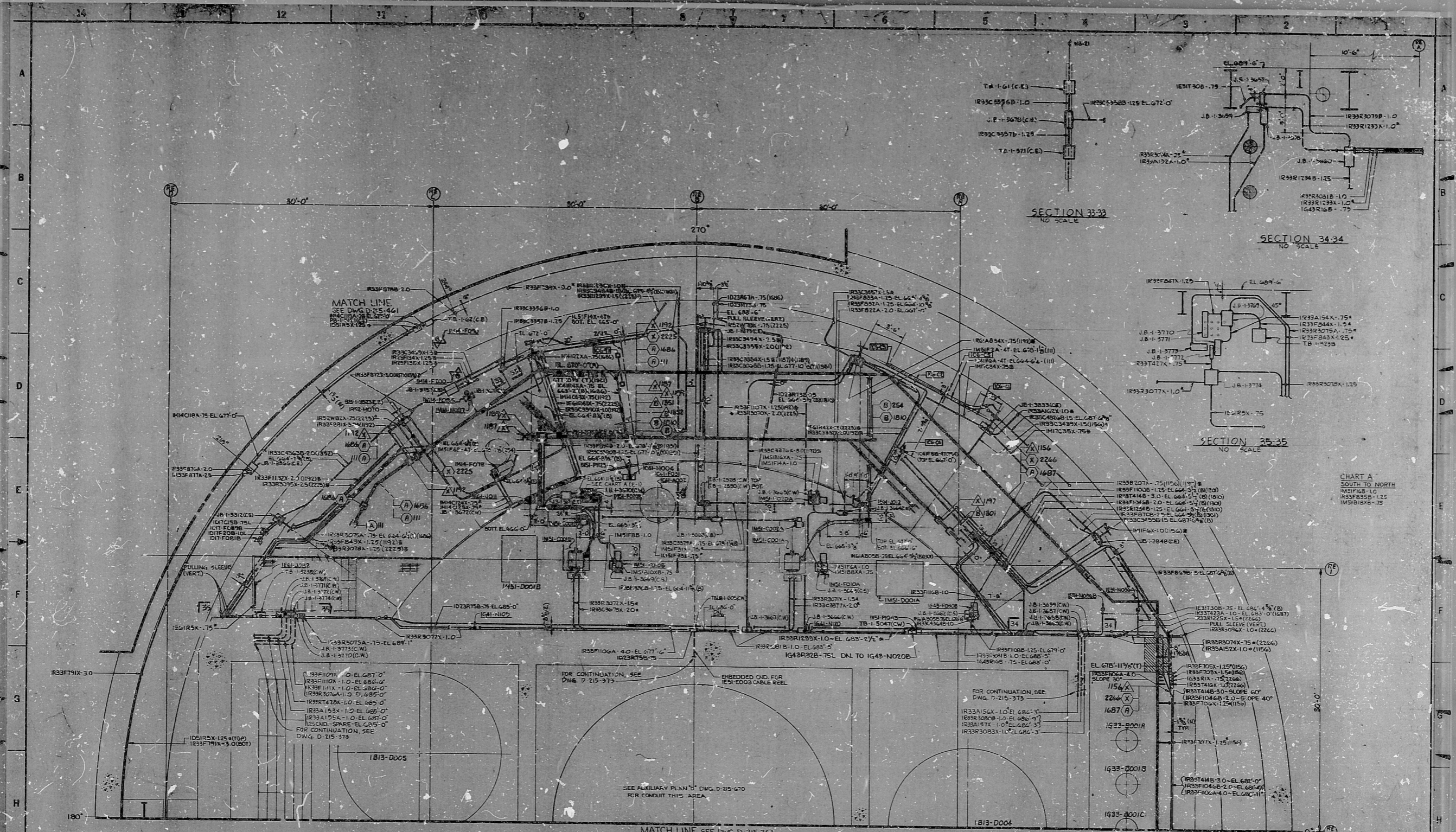
22

17

17

22

22



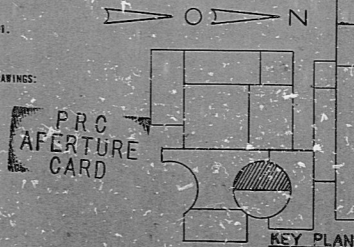
VALVE	SOLENOID NO.	LIM.	SW.	NO.
IMPL-16	IM1A-100	IM1A-100A	IM1A-100B	IM1A-100C
IM1A-F085	IM1A-F085	IM1A-F085A	IM1A-F085B	IM1A-F085C
IM1A-F090	IM1A-F090	IM1A-F090A	IM1A-F090B	IM1A-F090C
IM1A-F200	IM1A-F200	IM1A-F200A	IM1A-F200B	IM1A-F200C
IC41-F031	IC41-F031	IC41-F031A	IC41-F031B	IC41-F031C
IM1A-F075	IM1A-F075	IM1A-F075A	IM1A-F075B	IM1A-F075C
IM1A-F090	IM1A-F090	IM1A-F090A	IM1A-F090B	IM1A-F090C

○ TYPICAL CONDUIT INSTALLATION FOR VALVE SOLENOID C LIMIT SWITCHES.

○ CLOSURE LIM SW. ○ OPEN LIM SW. ○ SOLENOID

○ CONDUIT - 75L (UNLESS OTHERWISE NOTED ON CHART)

- NOTES:
1. FOR LEGEND, NOTES, REFERENCES, AND STANDARD DETAILS, SEE DWG. D-215-011.
 2. CONDUITS CONTINUED UP, SEE DWG. D-215-372. CONDUITS CONTINUED DOWN, SEE DWG. D-215-373.
 3. THIS DRAWING TO BE WORKED IN CONJUNCTION WITH THE FOLLOWING SUPPORT DRAWINGS:
 SS-215-382, SHEET C1
 SS-215-382, SHEET C2
 SS-215-382, SHEET C3
 SS-215-382, SHEET C4
 SS-215-382, SHEET C5
 SS-215-382, SHEET C6
 SS-215-382, SHEET C7
 SS-215-382, SHEET C8
 SS-215-382, SHEET C9



NUCLEAR SAFETY RELATED

DATE: 04/24/69

RELEASED FOR ENGR.

THE CLEVELAND ELECTRIC ILLUMINATING COMPANY

PERRY NUCLEAR POWER PLANT UNIT 1

ELECTRICAL CONDUIT LAYOUT

REACTOR BUILDING - WEST - EL. 66'-7"

GLIMBERT ASSOCIATES, INC.

DRAWING NUMBER: D-215-362

REV. 1

COND LYT R/B WEST EL 66'-7"

82 2100143

RIDS

