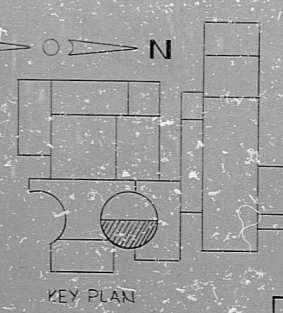
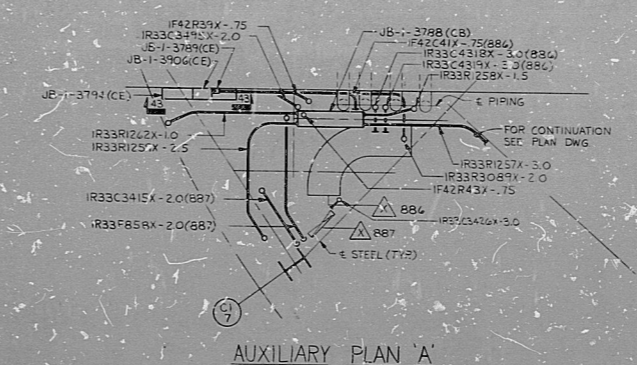
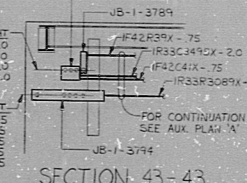


○ TYPICAL CONDUIT INSTALLATION FOR VALVE SOLENOID & LIMIT SWITCHES  
 ○ OPEN LIM. SW. SOLENOID  
 ○ CONDUIT - 75 (UNLESS OTHERWISE NOTED IN CHART)

VALVE MFL NO.	BOX NO.	SOLENOID NO.	LIM. SW. NO.	NO.
1636-FO01A	1636-FO01A	1636-FO01A	1636-FO01A	1636-FO01A
1636-FO01B	1636-FO01B	1636-FO01B	1636-FO01B	1636-FO01B
1636-FO01C	1636-FO01C	1636-FO01C	1636-FO01C	1636-FO01C
1636-FO01D	1636-FO01D	1636-FO01D	1636-FO01D	1636-FO01D
1636-FO01E	1636-FO01E	1636-FO01E	1636-FO01E	1636-FO01E
1636-FO01F	1636-FO01F	1636-FO01F	1636-FO01F	1636-FO01F
1636-FO01G	1636-FO01G	1636-FO01G	1636-FO01G	1636-FO01G
1636-FO01H	1636-FO01H	1636-FO01H	1636-FO01H	1636-FO01H
1636-FO01I	1636-FO01I	1636-FO01I	1636-FO01I	1636-FO01I
1636-FO01J	1636-FO01J	1636-FO01J	1636-FO01J	1636-FO01J
1636-FO01K	1636-FO01K	1636-FO01K	1636-FO01K	1636-FO01K
1636-FO01L	1636-FO01L	1636-FO01L	1636-FO01L	1636-FO01L
1636-FO01M	1636-FO01M	1636-FO01M	1636-FO01M	1636-FO01M
1636-FO01N	1636-FO01N	1636-FO01N	1636-FO01N	1636-FO01N
1636-FO01O	1636-FO01O	1636-FO01O	1636-FO01O	1636-FO01O
1636-FO01P	1636-FO01P	1636-FO01P	1636-FO01P	1636-FO01P
1636-FO01Q	1636-FO01Q	1636-FO01Q	1636-FO01Q	1636-FO01Q
1636-FO01R	1636-FO01R	1636-FO01R	1636-FO01R	1636-FO01R
1636-FO01S	1636-FO01S	1636-FO01S	1636-FO01S	1636-FO01S
1636-FO01T	1636-FO01T	1636-FO01T	1636-FO01T	1636-FO01T
1636-FO01U	1636-FO01U	1636-FO01U	1636-FO01U	1636-FO01U
1636-FO01V	1636-FO01V	1636-FO01V	1636-FO01V	1636-FO01V
1636-FO01W	1636-FO01W	1636-FO01W	1636-FO01W	1636-FO01W
1636-FO01X	1636-FO01X	1636-FO01X	1636-FO01X	1636-FO01X
1636-FO01Y	1636-FO01Y	1636-FO01Y	1636-FO01Y	1636-FO01Y
1636-FO01Z	1636-FO01Z	1636-FO01Z	1636-FO01Z	1636-FO01Z

VALVE MFL NO.	BOX NO.	SOLENOID NO.	LIM. SW. NO.	NO.
1636-FO02A	1636-FO02A	1636-FO02A	1636-FO02A	1636-FO02A
1636-FO02B	1636-FO02B	1636-FO02B	1636-FO02B	1636-FO02B
1636-FO02C	1636-FO02C	1636-FO02C	1636-FO02C	1636-FO02C
1636-FO02D	1636-FO02D	1636-FO02D	1636-FO02D	1636-FO02D
1636-FO02E	1636-FO02E	1636-FO02E	1636-FO02E	1636-FO02E
1636-FO02F	1636-FO02F	1636-FO02F	1636-FO02F	1636-FO02F
1636-FO02G	1636-FO02G	1636-FO02G	1636-FO02G	1636-FO02G
1636-FO02H	1636-FO02H	1636-FO02H	1636-FO02H	1636-FO02H
1636-FO02I	1636-FO02I	1636-FO02I	1636-FO02I	1636-FO02I
1636-FO02J	1636-FO02J	1636-FO02J	1636-FO02J	1636-FO02J
1636-FO02K	1636-FO02K	1636-FO02K	1636-FO02K	1636-FO02K
1636-FO02L	1636-FO02L	1636-FO02L	1636-FO02L	1636-FO02L
1636-FO02M	1636-FO02M	1636-FO02M	1636-FO02M	1636-FO02M
1636-FO02N	1636-FO02N	1636-FO02N	1636-FO02N	1636-FO02N
1636-FO02O	1636-FO02O	1636-FO02O	1636-FO02O	1636-FO02O
1636-FO02P	1636-FO02P	1636-FO02P	1636-FO02P	1636-FO02P
1636-FO02Q	1636-FO02Q	1636-FO02Q	1636-FO02Q	1636-FO02Q
1636-FO02R	1636-FO02R	1636-FO02R	1636-FO02R	1636-FO02R
1636-FO02S	1636-FO02S	1636-FO02S	1636-FO02S	1636-FO02S
1636-FO02T	1636-FO02T	1636-FO02T	1636-FO02T	1636-FO02T
1636-FO02U	1636-FO02U	1636-FO02U	1636-FO02U	1636-FO02U
1636-FO02V	1636-FO02V	1636-FO02V	1636-FO02V	1636-FO02V
1636-FO02W	1636-FO02W	1636-FO02W	1636-FO02W	1636-FO02W
1636-FO02X	1636-FO02X	1636-FO02X	1636-FO02X	1636-FO02X
1636-FO02Y	1636-FO02Y	1636-FO02Y	1636-FO02Y	1636-FO02Y
1636-FO02Z	1636-FO02Z	1636-FO02Z	1636-FO02Z	1636-FO02Z

NOTES:  
 1. FOR LEGEND, NOTES, REFERENCES, AND "BIG" DETAILS, SEE DWG. D-215-001.  
 2. CONDUITS CONTINUED UP, SEE DWG. D-215-371.  
 CONDUITS CONTINUED DOWN, SEE DWG. D-215-351.



PRC APERTURE CARD  
 NUCLEAR SAFETY RELATED!

REVISION	DATE	DESCRIPTION
1	04/25/70	ISSUED FOR CONSTRUCTION

CONSTRUCTION	DATE
LIMITED CONSTRUCTION	04/25/70
LIMITED CONSTRUCTION - AS NOTED	
PRELIMINARY NOT FOR CONSTRUCTION BIDDING PURPOSES	

THE CLEVELAND ELECTRIC ILLUMINATING COMPANY  
 PERRY NUCLEAR POWER PLANT  
 UNIT 1  
 CONDUIT LAYOUT  
 REACTOR BUILDING - EAST - EL. 601'-0"

GILBERT ASSOCIATES, INC.  
 ENGINEERS AND CONSULTANTS

DRAWING NO. 4549 D-215-361 E  
 SHEET NO. 04

34

38

22

22

17

17

11

11

6

6

5

5

5

5

11

11

8.5

8.5

11

11

17

17

22

22

COND L Y T R / B EAST EL 604.57

36

82.12100140

RIDS

