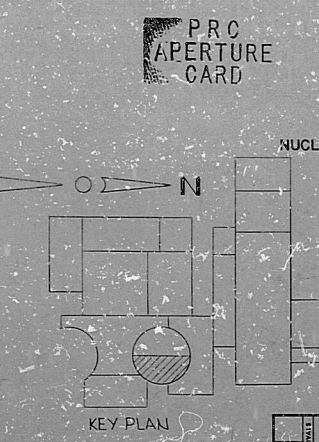
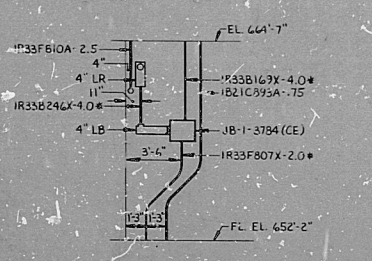


● TYPICAL CONDUIT INSTALLATION FOR VALVE SOLENOID & LIMIT SWITCHES.

○ OPEN LIM. SW.  
○ SOLENOID  
○ CONDUIT - 75L (UNLESS OTHERWISE NOTED ON DRAWING)

VALVE REF. NO.	SOLENOID NO. CON. NO.	LIM. SW. NO. CON. NO. (OPEN) / CON. NO. (CLOSED)
1636-FO09A JB-1234	1636-FA09A	1636-F09A
1636-FO14 JB-1235	1636-FA14A	1636-F014A
1636-FO14 JB-1235	1636-FA14B	1636-F014B
1636-FO14 JB-1235	1636-FA14C	1636-F014C
1636-FO14 JB-1235	1636-FA14D	1636-F014D
1636-FO14 JB-1235	1636-FA14E	1636-F014E
1636-FO14 JB-1235	1636-FA14F	1636-F014F
1636-FO14 JB-1235	1636-FA14G	1636-F014G
1636-FO14 JB-1235	1636-FA14H	1636-F014H
1636-FO14 JB-1235	1636-FA14I	1636-F014I
1636-FO14 JB-1235	1636-FA14J	1636-F014J
1636-FO14 JB-1235	1636-FA14K	1636-F014K
1636-FO14 JB-1235	1636-FA14L	1636-F014L
1636-FO14 JB-1235	1636-FA14M	1636-F014M
1636-FO14 JB-1235	1636-FA14N	1636-F014N
1636-FO14 JB-1235	1636-FA14O	1636-F014O
1636-FO14 JB-1235	1636-FA14P	1636-F014P
1636-FO14 JB-1235	1636-FA14Q	1636-F014Q
1636-FO14 JB-1235	1636-FA14R	1636-F014R
1636-FO14 JB-1235	1636-FA14S	1636-F014S
1636-FO14 JB-1235	1636-FA14T	1636-F014T
1636-FO14 JB-1235	1636-FA14U	1636-F014U
1636-FO14 JB-1235	1636-FA14V	1636-F014V
1636-FO14 JB-1235	1636-FA14W	1636-F014W
1636-FO14 JB-1235	1636-FA14X	1636-F014X
1636-FO14 JB-1235	1636-FA14Y	1636-F014Y
1636-FO14 JB-1235	1636-FA14Z	1636-F014Z



- NOTES:
1. FOR LEGEND, NOTES, REFERENCES, AND STANDARD DETAILS, SEE DWG. D-215-001.
  2. CONDUITS CONTINUED UP, SEE DWG. D-215-361. CONDUITS CONTINUED DOWN, SEE DWG. D-215-441.

REV'D	AS INDICATED	PLACE
G	1	REVISED AS INDICATED
F	2	REVISED AS INDICATED
E	3	REVISED AS INDICATED
D	4	REVISED AS INDICATED
C	5	REVISED AS INDICATED
B	6	REVISED AS INDICATED
A	7	REVISED AS INDICATED

CONSTRUCTION SP-22		
LIMITED CONSTRUCTION: AS NOTED		
PRELIMINARY NOT FOR CONSTRUCTION BIDDING PURPOSES		
DATE	RELEASED FOR	ENGR.
	THE CLEVELAND ELECTRIC ILLUMINATING COMPANY	
	PERRY NUCLEAR POWER PLANT	UNIT 1
ELECTRICAL CONDUIT LAYOUT		
REACTOR BUILDING - EAST - 11.452'-2"		
DRAWING BY: GILBERT ASSOCIATES, INC.		
ENGINEER AND CONSULTANT		
DATE	ENGINEER APPROVAL	
	DATE	BY
1/28/58	4/1/58	W. J. B. / J. E. S.
DRAWING NUMBER: 44549-D-215-331-G		

COND. PLANT R/B EAST EL. 652'-2" GSA-C



8212100134

Bids

