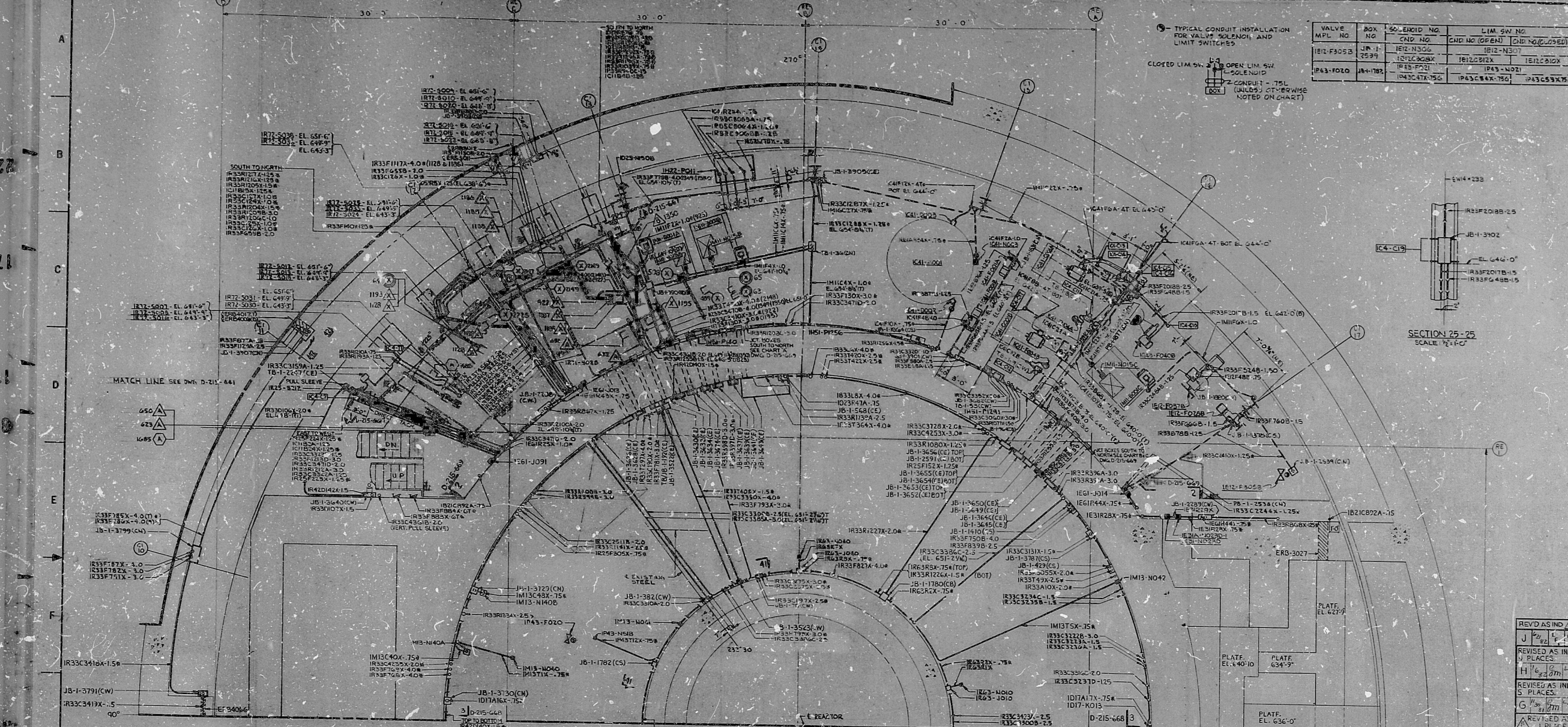
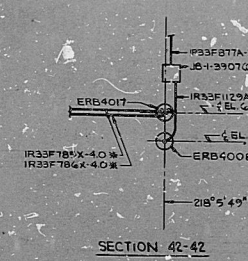
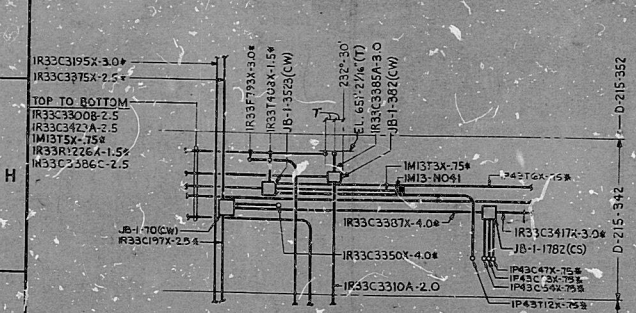
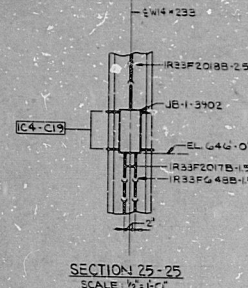


14 13 12 11 10 9 8 7 6 5 4 3 2 1



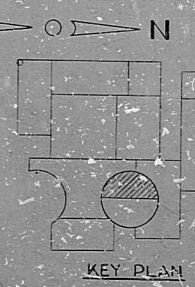
VALVE MPL NO	BOX NO	SOLENOID NO. CND. NO.	LIM SW NO. CND. NO. (OPEN)	CND. NO. (CLOSE)
IR33F005B	JB-1	IR33N300	IR33N307	IR33N308
IR33F006B	JB-1	IR33N300	IR33N307	IR33N308
IR33F007B	JB-1	IR33N300	IR33N307	IR33N308



- NOTES:
- FOR LEGEND, NOTES, REFERENCES, AND STANDARD DETAILS, SEE DWG. D-215-001.
 - CONDUITS CONTINUED UP, SEE DWG. D-215-302.
 - CONDUITS CONTINUED DOWN, SEE DWG. D-215-302.
 - THIS DRAWING TO BE WORKED IN CONJUNCTION WITH THE FOLLOWING ELECTRICAL SUPPORT DRAWINGS:
 - SS-215-342, SHEET C6
 - SS-215-342, SHEET C7
 - SS-215-342, SHEET C10
 - SS-215-342, SHEET C11
 - SS-215-342, SHEET C12
 - SS-215-342, SHEET C13
 - SS-215-342, SHEET C14
 - SS-215-342, SHEET C15
 - SS-215-342, SHEET C16
 - SS-215-342, SHEET C17
 - SS-215-342, SHEET C18
 - SS-215-342, SHEET C19

PROC APERTURE CARD

NUCLEAR SAFETY RELATED



REV	AS INDICATED	PLACE
J	REVISED AS INDICATED	PLACES
I	REVISED AS INDICATED	PLACES
H	REVISED AS INDICATED	PLACES
G	REVISED AS INDICATED	PLACES
F	REVISED AS INDICATED	PLACES
E	REVISED AS INDICATED	PLACES
D	REVISED AS INDICATED	PLACES
C	REVISED AS INDICATED	PLACES
B	REVISED AS INDICATED	PLACES
A	REVISED AS INDICATED	PLACES

DATE	RELEASED FOR	UNIT
7/28/74	CONSTRUCTION	300-33
	LIMITED CONSTRUCTION: AS NOTED	
	PRELIMINARY NOT FOR CONSTRUCTION	
	BIDDING PURPOSES	
	DATE	RELEASED FOR
	THE CLEVELAND ELECTRIC ILLUMINATING COMPANY	
	PERY NUCLEAR POWER PLANT	UNIT 1
	ELECTRICAL	
	CONDUIT LAYOUT	
	REACTOR BUILDING - WEST EL. 642'-0"	
	DESIGNED BY	GILBERT ASSOCIATES, INC.
	EXAMINED AND APPROVED	
	DRAWING	ENGINEER APPROVAL
	DATE	7/28/74
	NO. 04	4649
	D-215-342	J
	14148-00	DRAWING NUMBER

C N C 2 1 7 7 2 B W E S T E L 6 4 2 - 0

8212100131

Rids

