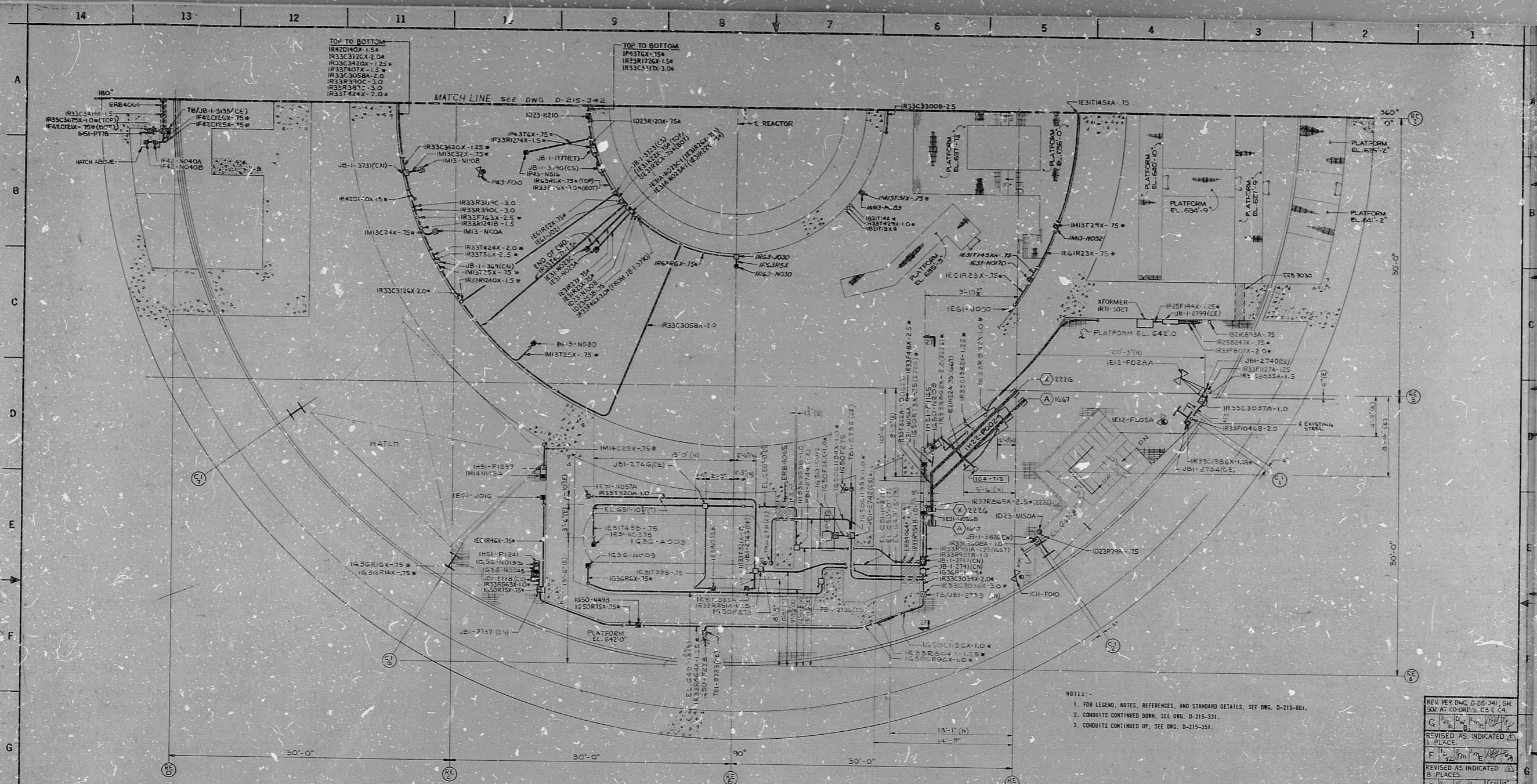


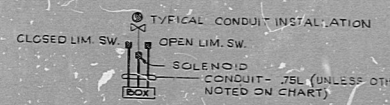
34"

34"



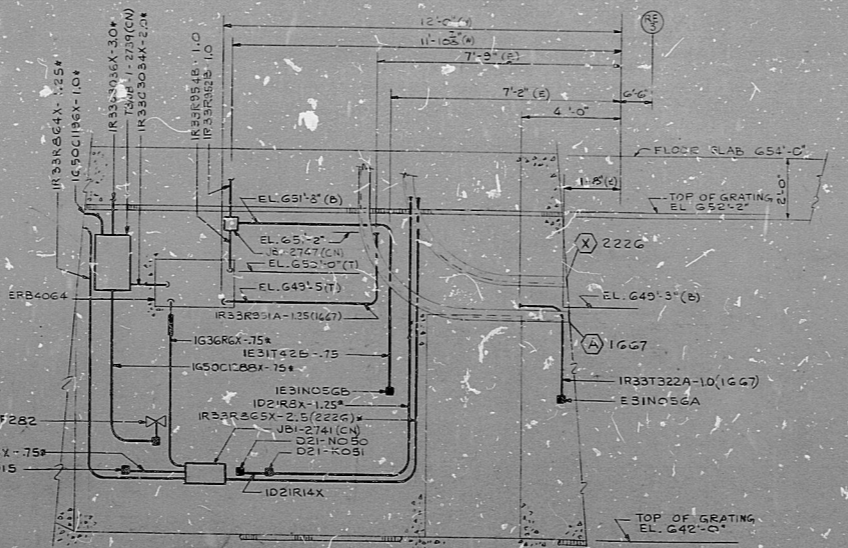
22"
17"
11"
8.5"
11"
8.5"
11"
17"
22"

22"
17"
11"
8.5"
11"
8.5"
11"
17"
22"



VALVE, SOLENOID & LIMIT SWITCHES

VALVE MPL NO.	BOX NO.	SOLENOID NO.	LIMIT SW. NO.
G50-F273	T81-273	IG50C1185X	IG50-N273
G50-F275	T81-275	IG50C1187X	IG50-N275
G50-F278	T81-278	IG50C1188X	IG50-N278
E12-F305A	T81-278A	IG50C1189X	IG50-N278A
D13-F015	J81-370	IG50C1190X	IG50-N279
IC11-FO10	J81-370A	IG50C1191X	IG50-N279A



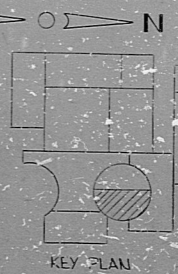
SECTION 27-27
SCALE 1/4" = 1'-0"

- NOTES:-
 1. FOR LEGEND, NOTES, REFERENCES, AND STANDARD DETAILS, SEE DWG. D-215-001.
 2. CONDUITS CONTINUED DOWN, SEE DWG. D-215-331.
 3. CONDUITS CONTINUED UP, SEE DWG. D-215-331.

REV PER DWG. D-215-341, SH. 50 AT COORDS. C5 X 7A

REV	DATE	BY	CHKD	DESCRIPTION
G				REVISED AS INDICATED IN PLACE
F				REVISED AS INDICATED IN PLACE
E				REVISED AS INDICATED IN PLACE, ALSO AS PER ECN #6386-33-1810 AT COORDS. A15, A14, B18, B14
D				REVISED AS INDICATED IN PLACE
C				REV AS INDICATED IN PLACE
B				REV AS INDICATED IN PLACE
A				REV AS INDICATED IN PLACE

FRC APERTURE CARD



NUCLEAR SAFETY RELATED

REV	DATE	BY	CHKD	DESCRIPTION
1				CONSTRUCTION
2				LIMITED CONSTRUCTION: AS NOTED
3				PRELIMINARY NOT FOR CONSTRUCTION BIDDING PURPOSES

DATE RELEASED FOR ENGR

THE CLEVELAND ELECTRIC ILLUMINATING COMPANY

PERRY NUCLEAR POWER PLANT UNIT 1

ELECTRICAL

CONDUIT LAYOUT

REACTOR BUILDING - EAST - EL. 042'-0"

GILBERT ASSOCIATES, INC.
ENGINEERS AND CONSULTANTS

PROJECT NO. 4549 D-25-341 G

DRAWING NUMBER

8212100129

Bids

