

14

14

17

17

11

11

8.5

8.5

11

11

17

17

22

22

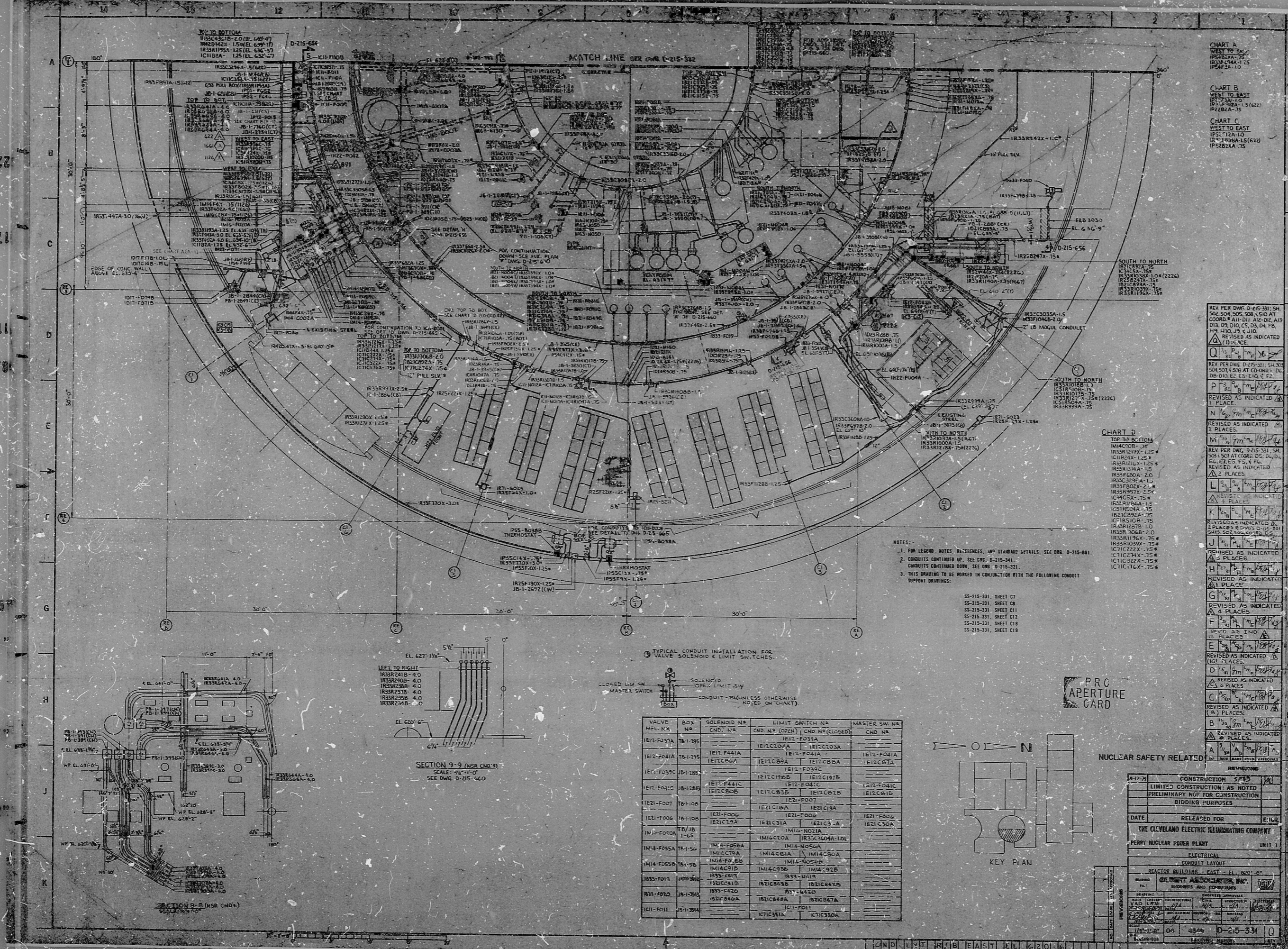


CHART A
WEST TO EAST
IP5212A-10
IP5212A-15
IP5212A-20
IP5212A-25

CHART B
WEST TO EAST
IP5212A-10
IP5212A-15
IP5212A-20
IP5212A-25

CHART C
WEST TO EAST
IP5212A-10
IP5212A-15
IP5212A-20
IP5212A-25

REV PER DWG D-215-331 SH
504 504 504 504 504 AT
COORD # A11-D11 A12-D12 A13
D13 D14 D15 D16 D17 D18
H9 H10 H11 H12
REVISED AS INDICATED

Q
REV PER DWG D-215-331 SH
504 504 504 504 504 AT
COORD # A11-D11 A12-D12 A13
D13 D14 D15 D16 D17 D18
H9 H10 H11 H12
REVISED AS INDICATED

P
REV PER DWG D-215-331 SH
504 504 504 504 504 AT
COORD # A11-D11 A12-D12 A13
D13 D14 D15 D16 D17 D18
H9 H10 H11 H12
REVISED AS INDICATED

N
REV PER DWG D-215-331 SH
504 504 504 504 504 AT
COORD # A11-D11 A12-D12 A13
D13 D14 D15 D16 D17 D18
H9 H10 H11 H12
REVISED AS INDICATED

M
REV PER DWG D-215-331 SH
504 504 504 504 504 AT
COORD # A11-D11 A12-D12 A13
D13 D14 D15 D16 D17 D18
H9 H10 H11 H12
REVISED AS INDICATED

L
REV PER DWG D-215-331 SH
504 504 504 504 504 AT
COORD # A11-D11 A12-D12 A13
D13 D14 D15 D16 D17 D18
H9 H10 H11 H12
REVISED AS INDICATED

K
REV PER DWG D-215-331 SH
504 504 504 504 504 AT
COORD # A11-D11 A12-D12 A13
D13 D14 D15 D16 D17 D18
H9 H10 H11 H12
REVISED AS INDICATED

J
REV PER DWG D-215-331 SH
504 504 504 504 504 AT
COORD # A11-D11 A12-D12 A13
D13 D14 D15 D16 D17 D18
H9 H10 H11 H12
REVISED AS INDICATED

H
REV PER DWG D-215-331 SH
504 504 504 504 504 AT
COORD # A11-D11 A12-D12 A13
D13 D14 D15 D16 D17 D18
H9 H10 H11 H12
REVISED AS INDICATED

G
REV PER DWG D-215-331 SH
504 504 504 504 504 AT
COORD # A11-D11 A12-D12 A13
D13 D14 D15 D16 D17 D18
H9 H10 H11 H12
REVISED AS INDICATED

F
REV PER DWG D-215-331 SH
504 504 504 504 504 AT
COORD # A11-D11 A12-D12 A13
D13 D14 D15 D16 D17 D18
H9 H10 H11 H12
REVISED AS INDICATED

E
REV PER DWG D-215-331 SH
504 504 504 504 504 AT
COORD # A11-D11 A12-D12 A13
D13 D14 D15 D16 D17 D18
H9 H10 H11 H12
REVISED AS INDICATED

D
REV PER DWG D-215-331 SH
504 504 504 504 504 AT
COORD # A11-D11 A12-D12 A13
D13 D14 D15 D16 D17 D18
H9 H10 H11 H12
REVISED AS INDICATED

C
REV PER DWG D-215-331 SH
504 504 504 504 504 AT
COORD # A11-D11 A12-D12 A13
D13 D14 D15 D16 D17 D18
H9 H10 H11 H12
REVISED AS INDICATED

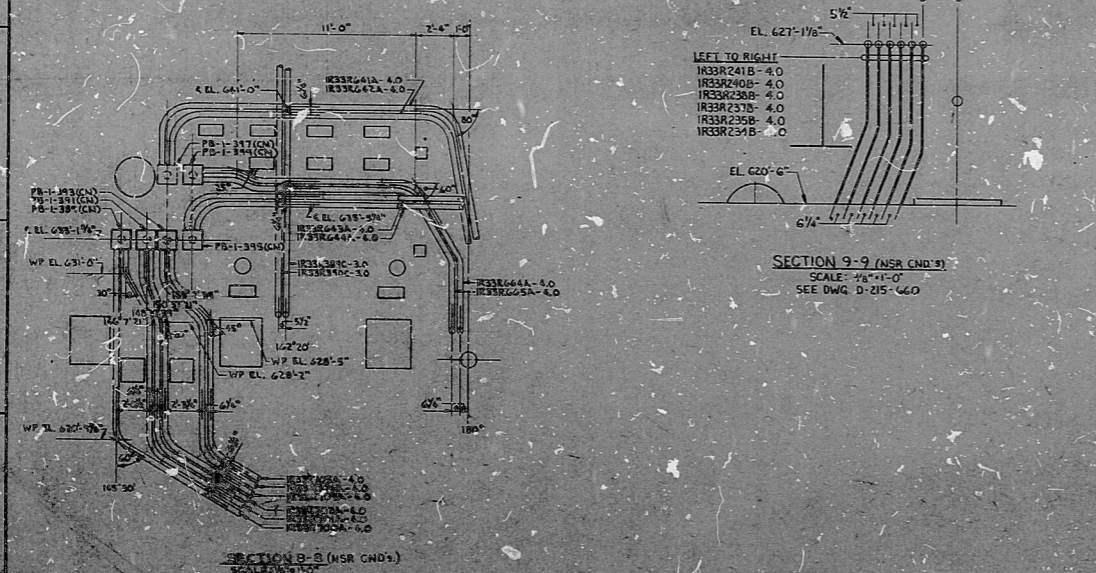
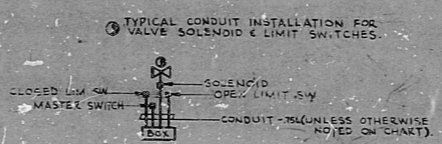
B
REV PER DWG D-215-331 SH
504 504 504 504 504 AT
COORD # A11-D11 A12-D12 A13
D13 D14 D15 D16 D17 D18
H9 H10 H11 H12
REVISED AS INDICATED

A
REV PER DWG D-215-331 SH
504 504 504 504 504 AT
COORD # A11-D11 A12-D12 A13
D13 D14 D15 D16 D17 D18
H9 H10 H11 H12
REVISED AS INDICATED

CHART D
TOP TO BOTTOM
IP5212A-10
IP5212A-15
IP5212A-20
IP5212A-25

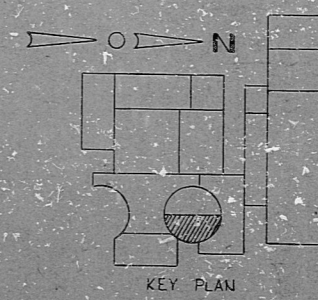
REV PER DWG D-215-331 SH
504 504 504 504 504 AT
COORD # A11-D11 A12-D12 A13
D13 D14 D15 D16 D17 D18
H9 H10 H11 H12
REVISED AS INDICATED

NOTES:
1. FOR LEGEND NOTES, REFERENCES, AND STANDARD DETAILS, SEE DWG. D-215-341.
2. CONDUITS CONTINUED UP, SEE DWG. D-215-341.
3. CONDUITS CONTINUED DOWN, SEE DWG. D-215-321.
4. THIS DRAWING IS TO BE WORKED IN CONJUNCTION WITH THE FOLLOWING CONDUIT SUPPORT BRACKETS:
SS-215-331, SHEET C7
SS-215-331, SHEET C8
SS-215-331, SHEET C9
SS-215-331, SHEET C10
SS-215-331, SHEET C11
SS-215-331, SHEET C12
SS-215-331, SHEET C13
SS-215-331, SHEET C14



| VALVE NO. | BOX NO. | SOLENOID NO. | LIMIT SWITCH NO. | MASTER SW. NO. |
|--------------|------------|--------------|------------------|----------------|
| 1E11-F037A | T8-1-195 | 1E11-F037A | 1E11-F037A | 1E11-F037A |
| 1E12-F041A | T8-1-195 | 1E12-F041A | 1E12-F041A | 1E12-F041A |
| 1E12-F041B | T8-1-195 | 1E12-F041B | 1E12-F041B | 1E12-F041B |
| 1E12-F041C | T8-1-195 | 1E12-F041C | 1E12-F041C | 1E12-F041C |
| 1E11-F041A | T8-1-195 | 1E11-F041A | 1E11-F041A | 1E11-F041A |
| 1E11-F041B | T8-1-195 | 1E11-F041B | 1E11-F041B | 1E11-F041B |
| 1E11-F041C | T8-1-195 | 1E11-F041C | 1E11-F041C | 1E11-F041C |
| 1E11-F041D | T8-1-195 | 1E11-F041D | 1E11-F041D | 1E11-F041D |
| 1E11-F041E | T8-1-195 | 1E11-F041E | 1E11-F041E | 1E11-F041E |
| 1E11-F041F | T8-1-195 | 1E11-F041F | 1E11-F041F | 1E11-F041F |
| 1E11-F041G | T8-1-195 | 1E11-F041G | 1E11-F041G | 1E11-F041G |
| 1E11-F041H | T8-1-195 | 1E11-F041H | 1E11-F041H | 1E11-F041H |
| 1E11-F041I | T8-1-195 | 1E11-F041I | 1E11-F041I | 1E11-F041I |
| 1E11-F041J | T8-1-195 | 1E11-F041J | 1E11-F041J | 1E11-F041J |
| 1E11-F041K | T8-1-195 | 1E11-F041K | 1E11-F041K | 1E11-F041K |
| 1E11-F041L | T8-1-195 | 1E11-F041L | 1E11-F041L | 1E11-F041L |
| 1E11-F041M | T8-1-195 | 1E11-F041M | 1E11-F041M | 1E11-F041M |
| 1E11-F041N | T8-1-195 | 1E11-F041N | 1E11-F041N | 1E11-F041N |
| 1E11-F041O | T8-1-195 | 1E11-F041O | 1E11-F041O | 1E11-F041O |
| 1E11-F041P | T8-1-195 | 1E11-F041P | 1E11-F041P | 1E11-F041P |
| 1E11-F041Q | T8-1-195 | 1E11-F041Q | 1E11-F041Q | 1E11-F041Q |
| 1E11-F041R | T8-1-195 | 1E11-F041R | 1E11-F041R | 1E11-F041R |
| 1E11-F041S | T8-1-195 | 1E11-F041S | 1E11-F041S | 1E11-F041S |
| 1E11-F041T | T8-1-195 | 1E11-F041T | 1E11-F041T | 1E11-F041T |
| 1E11-F041U | T8-1-195 | 1E11-F041U | 1E11-F041U | 1E11-F041U |
| 1E11-F041V | T8-1-195 | 1E11-F041V | 1E11-F041V | 1E11-F041V |
| 1E11-F041W | T8-1-195 | 1E11-F041W | 1E11-F041W | 1E11-F041W |
| 1E11-F041X | T8-1-195 | 1E11-F041X | 1E11-F041X | 1E11-F041X |
| 1E11-F041Y | T8-1-195 | 1E11-F041Y | 1E11-F041Y | 1E11-F041Y |
| 1E11-F041Z | T8-1-195 | 1E11-F041Z | 1E11-F041Z | 1E11-F041Z |

PRO
APERTURE
GARD



NUCLEAR SAFETY RELATED

CONSTRUCTION 5793

LIMITED CONSTRUCTION AS NOTED
PRELIMINARY NOT FOR CONSTRUCTION
BIDDING PURPOSES

DATE: _____ RELEASED FOR: _____

THE CLEVELAND ELECTRIC ILLUMINATING COMPANY UNIT 1

PERRY NUCLEAR POWER PLANT

ELECTRICAL
CONDUIT LAYOUT

REACTOR BUILDING - EAST - EL. 620'-6"

DESIGNED BY: _____ CHECKED BY: _____

DATE: _____

SCALE: 1/8"=1'-0"

D-215-331 10

82.2100123

Bids

