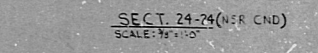
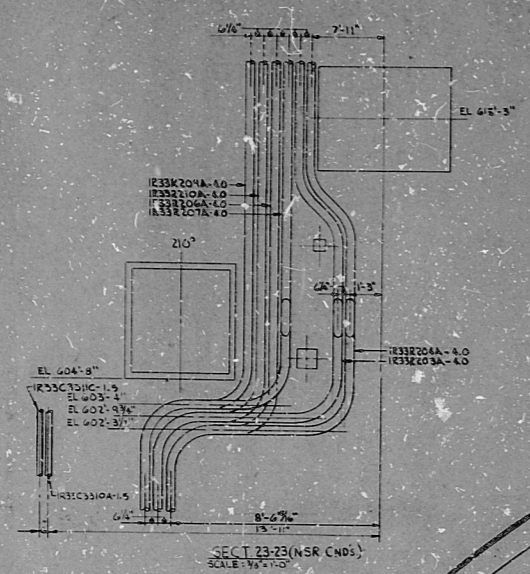
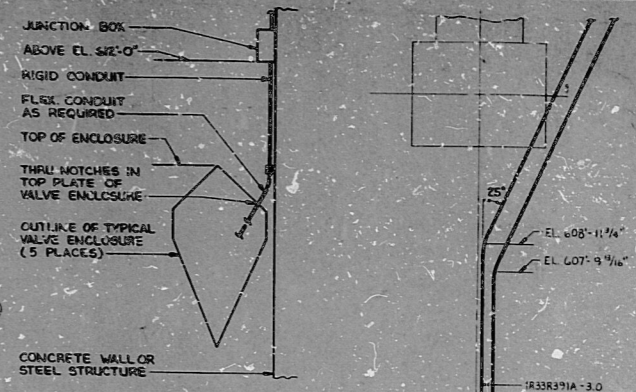


① TYPICAL LIMIT INSTALLATION FOR VALVE SOLENOID / LIMIT SWITCH

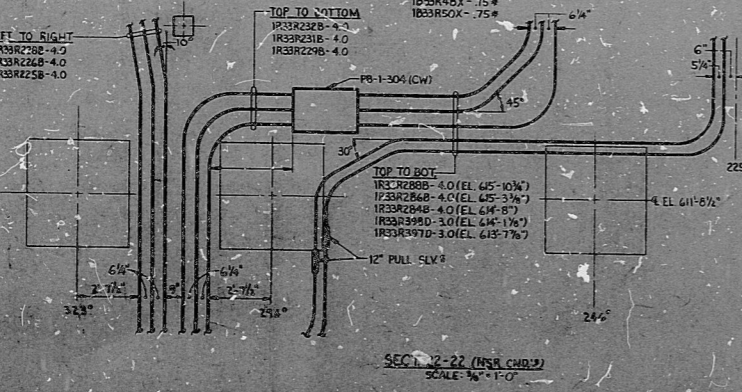
CLOSED LIMIT SW. / OPEN LIMIT SW. / SOLENOID / CONDUIT - 75 (UNLESS OTHERWISE NOTED ON CHART)

| VALVE MFL No.     | BOX No. | SOLENOID No. | LIMIT SWITCH No. |
|-------------------|---------|--------------|------------------|
| IC41-F00B-10-1252 |         |              | IC41-F00B        |
|                   |         |              | IC41-CBA         |
|                   |         |              | IC41-CBP         |



MATCH LINE SEE DWG D-215-424

MATCH LINE SEE DWG D-215-222



- NOTES:
- FOR LEGEND, NOTES, REFERENCES, AND STANDARD DETAILS, SEE DWG. D-215-001.
  - CONDUITS CONTINUED UP, SEE DWG. D-215-332.
  - CONDUITS CONTINUED DOWN, SEE DWG. D-215-332.
  - THIS DRAWING TO BE FORW. IN CONJUNCTION WITH THE FOLLOWING SUPPORT DRAWINGS:
 

|                      |                       |
|----------------------|-----------------------|
| SS-215-022, SHEET C5 | SS-215-022, SHEET C13 |
| SS-215-022, SHEET C6 | SS-215-022, SHEET C14 |
| SS-215-022, SHEET C7 | SS-215-022, SHEET C15 |
| SS-215-022, SHEET C8 | SS-215-022, SHEET C16 |
| SS-215-022, SHEET C9 |                       |
  - ALL CONDUITS ENTERING POOL, POICE, TERMINAL, AND JUNCTION BOXES OUTSIDE DRIVELL ON THIS DRAWING TO HAVE SEALING GASKETS INSTALLED TO PREVENT WATER ENTRY DURING POOL SWELL.

REV PER DWG D-215-322, SH 4

REVISED AS INDICATED IN 1 PLACE

REVISED AS INDICATED IN 2 PLACES

REVISED AS INDICATED IN 3 PLACES

REVISED AS INDICATED IN 4 PLACES

REVISED AS INDICATED IN 5 PLACES

REVISED AS PER ECR #6674-95-1406 AT COOP'S FS, FA, GB, GA, GAB, INDICATED IN 3 PLACES

REVISED AS INDICATED IN 4 PLACES

REVISED AS PER ECR #6674-95-1406 AT COOP'S FS, FA, GB, GA, GAB, INDICATED IN 3 PLACES

REVISED AS INDICATED IN 4 PLACES

REVISED AS INDICATED IN 5 PLACES

REVISED AS INDICATED IN 6 PLACES

REVISED AS INDICATED IN 7 PLACES

REVISED AS INDICATED IN 8 PLACES

REVISED AS INDICATED IN 9 PLACES

REVISED AS INDICATED IN 10 PLACES

REVISED AS INDICATED IN 11 PLACES

REVISED AS INDICATED IN 12 PLACES

REVISED AS INDICATED IN 13 PLACES

REVISED AS INDICATED IN 14 PLACES

REVISED AS INDICATED IN 15 PLACES

REVISED AS INDICATED IN 16 PLACES

REVISED AS INDICATED IN 17 PLACES

REVISED AS INDICATED IN 18 PLACES

REVISED AS INDICATED IN 19 PLACES

REVISED AS INDICATED IN 20 PLACES

REVISED AS INDICATED IN 21 PLACES

REVISED AS INDICATED IN 22 PLACES

REVISED AS INDICATED IN 23 PLACES

REVISED AS INDICATED IN 24 PLACES

REVISED AS INDICATED IN 25 PLACES

REVISED AS INDICATED IN 26 PLACES

REVISED AS INDICATED IN 27 PLACES

REVISED AS INDICATED IN 28 PLACES

REVISED AS INDICATED IN 29 PLACES

REVISED AS INDICATED IN 30 PLACES

REVISED AS INDICATED IN 31 PLACES

REVISED AS INDICATED IN 32 PLACES

REVISED AS INDICATED IN 33 PLACES

REVISED AS INDICATED IN 34 PLACES

REVISED AS INDICATED IN 35 PLACES

REVISED AS INDICATED IN 36 PLACES

REVISED AS INDICATED IN 37 PLACES

REVISED AS INDICATED IN 38 PLACES

REVISED AS INDICATED IN 39 PLACES

REVISED AS INDICATED IN 40 PLACES

REVISED AS INDICATED IN 41 PLACES

REVISED AS INDICATED IN 42 PLACES

REVISED AS INDICATED IN 43 PLACES

REVISED AS INDICATED IN 44 PLACES

REVISED AS INDICATED IN 45 PLACES

REVISED AS INDICATED IN 46 PLACES

REVISED AS INDICATED IN 47 PLACES

REVISED AS INDICATED IN 48 PLACES

REVISED AS INDICATED IN 49 PLACES

REVISED AS INDICATED IN 50 PLACES

REVISED AS INDICATED IN 51 PLACES

REVISED AS INDICATED IN 52 PLACES

REVISED AS INDICATED IN 53 PLACES

REVISED AS INDICATED IN 54 PLACES

REVISED AS INDICATED IN 55 PLACES

REVISED AS INDICATED IN 56 PLACES

REVISED AS INDICATED IN 57 PLACES

REVISED AS INDICATED IN 58 PLACES

REVISED AS INDICATED IN 59 PLACES

REVISED AS INDICATED IN 60 PLACES

REVISED AS INDICATED IN 61 PLACES

REVISED AS INDICATED IN 62 PLACES

REVISED AS INDICATED IN 63 PLACES

REVISED AS INDICATED IN 64 PLACES

REVISED AS INDICATED IN 65 PLACES

REVISED AS INDICATED IN 66 PLACES

REVISED AS INDICATED IN 67 PLACES

REVISED AS INDICATED IN 68 PLACES

REVISED AS INDICATED IN 69 PLACES

REVISED AS INDICATED IN 70 PLACES

REVISED AS INDICATED IN 71 PLACES

REVISED AS INDICATED IN 72 PLACES

REVISED AS INDICATED IN 73 PLACES

REVISED AS INDICATED IN 74 PLACES

REVISED AS INDICATED IN 75 PLACES

REVISED AS INDICATED IN 76 PLACES

REVISED AS INDICATED IN 77 PLACES

REVISED AS INDICATED IN 78 PLACES

REVISED AS INDICATED IN 79 PLACES

REVISED AS INDICATED IN 80 PLACES

REVISED AS INDICATED IN 81 PLACES

REVISED AS INDICATED IN 82 PLACES

REVISED AS INDICATED IN 83 PLACES

REVISED AS INDICATED IN 84 PLACES

REVISED AS INDICATED IN 85 PLACES

REVISED AS INDICATED IN 86 PLACES

REVISED AS INDICATED IN 87 PLACES

REVISED AS INDICATED IN 88 PLACES

REVISED AS INDICATED IN 89 PLACES

REVISED AS INDICATED IN 90 PLACES

REVISED AS INDICATED IN 91 PLACES

REVISED AS INDICATED IN 92 PLACES

REVISED AS INDICATED IN 93 PLACES

REVISED AS INDICATED IN 94 PLACES

REVISED AS INDICATED IN 95 PLACES

REVISED AS INDICATED IN 96 PLACES

REVISED AS INDICATED IN 97 PLACES

REVISED AS INDICATED IN 98 PLACES

REVISED AS INDICATED IN 99 PLACES

REVISED AS INDICATED IN 100 PLACES

REVISIONS

| NO. | DATE | DESCRIPTION |
|-----|------|-------------|
| 1   |      |             |
| 2   |      |             |
| 3   |      |             |
| 4   |      |             |
| 5   |      |             |
| 6   |      |             |
| 7   |      |             |
| 8   |      |             |
| 9   |      |             |
| 10  |      |             |
| 11  |      |             |
| 12  |      |             |
| 13  |      |             |
| 14  |      |             |
| 15  |      |             |
| 16  |      |             |
| 17  |      |             |
| 18  |      |             |
| 19  |      |             |
| 20  |      |             |
| 21  |      |             |
| 22  |      |             |
| 23  |      |             |
| 24  |      |             |
| 25  |      |             |
| 26  |      |             |
| 27  |      |             |
| 28  |      |             |
| 29  |      |             |
| 30  |      |             |
| 31  |      |             |
| 32  |      |             |
| 33  |      |             |
| 34  |      |             |
| 35  |      |             |
| 36  |      |             |
| 37  |      |             |
| 38  |      |             |
| 39  |      |             |
| 40  |      |             |
| 41  |      |             |
| 42  |      |             |
| 43  |      |             |
| 44  |      |             |
| 45  |      |             |
| 46  |      |             |
| 47  |      |             |
| 48  |      |             |
| 49  |      |             |
| 50  |      |             |
| 51  |      |             |
| 52  |      |             |
| 53  |      |             |
| 54  |      |             |
| 55  |      |             |
| 56  |      |             |
| 57  |      |             |
| 58  |      |             |
| 59  |      |             |
| 60  |      |             |
| 61  |      |             |
| 62  |      |             |
| 63  |      |             |
| 64  |      |             |
| 65  |      |             |
| 66  |      |             |
| 67  |      |             |
| 68  |      |             |
| 69  |      |             |
| 70  |      |             |
| 71  |      |             |
| 72  |      |             |
| 73  |      |             |
| 74  |      |             |
| 75  |      |             |
| 76  |      |             |
| 77  |      |             |
| 78  |      |             |
| 79  |      |             |
| 80  |      |             |
| 81  |      |             |
| 82  |      |             |
| 83  |      |             |
| 84  |      |             |
| 85  |      |             |
| 86  |      |             |
| 87  |      |             |
| 88  |      |             |
| 89  |      |             |
| 90  |      |             |
| 91  |      |             |
| 92  |      |             |
| 93  |      |             |
| 94  |      |             |
| 95  |      |             |
| 96  |      |             |
| 97  |      |             |
| 98  |      |             |
| 99  |      |             |
| 100 |      |             |

DATE: RELEASED FOR ENGR

THE CLEVELAND ELECTRIC ILLUMINATING COMPANY

PERRY NUCLEAR POWER PLANT UNIT 1

ELECTRICAL

CONDUIT LAYOUT

REACTOR BUILDING - WEST - EL. 599' 0"

CRUMPTON ASSOCIATES, INC.

ENGINEER APPROVAL

DATE: 11-21-64

SCALE: 1/4"=1'-0"

D-215-322 P

PRO APERTURE CARD

KEY PLAN

14 13 12 11 10 9 8 7 6 5 4 3 2 1

A B C D E F G H J K



8212100122

Rids

