

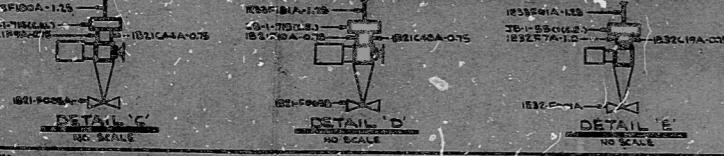
○ TYPICAL CONDUIT INSTALLATION FOR VALVE, SOLENOID AND LIMIT SWITCHES

□ CLOSED LIMIT SWITCH

□ OPEN LIMIT SWITCH

□ CONDUIT UNDER PRESSURE NOTED ON QUOTE

VALVE SYMBOL	BOX NO.	SOLENOID NO.	CON. NO.	CON. NO. (G.P.M.)	CON. NO. (G.P.S.D.)
IN11-F470A	IB11-1118	IN11-F470A	IN11-F470A	IN11-F470A	IN11-F470A
IN11-F470B	IB11-1119	IN11-F470B	IN11-F470B	IN11-F470B	IN11-F470B
IN11-F470C	IB11-1120	IN11-F470C	IN11-F470C	IN11-F470C	IN11-F470C
IN11-F470D	IB11-1121	IN11-F470D	IN11-F470D	IN11-F470D	IN11-F470D
IN11-F470E	IB11-1122	IN11-F470E	IN11-F470E	IN11-F470E	IN11-F470E
IN11-F470F	IB11-1123	IN11-F470F	IN11-F470F	IN11-F470F	IN11-F470F
IN11-F470G	IB11-1124	IN11-F470G	IN11-F470G	IN11-F470G	IN11-F470G
IN11-F470H	IB11-1125	IN11-F470H	IN11-F470H	IN11-F470H	IN11-F470H
IN11-F470I	IB11-1126	IN11-F470I	IN11-F470I	IN11-F470I	IN11-F470I
IN11-F470J	IB11-1127	IN11-F470J	IN11-F470J	IN11-F470J	IN11-F470J
IN11-F470K	IB11-1128	IN11-F470K	IN11-F470K	IN11-F470K	IN11-F470K
IN11-F470L	IB11-1129	IN11-F470L	IN11-F470L	IN11-F470L	IN11-F470L
IN11-F470M	IB11-1130	IN11-F470M	IN11-F470M	IN11-F470M	IN11-F470M
IN11-F470N	IB11-1131	IN11-F470N	IN11-F470N	IN11-F470N	IN11-F470N
IN11-F470O	IB11-1132	IN11-F470O	IN11-F470O	IN11-F470O	IN11-F470O
IN11-F470P	IB11-1133	IN11-F470P	IN11-F470P	IN11-F470P	IN11-F470P
IN11-F470Q	IB11-1134	IN11-F470Q	IN11-F470Q	IN11-F470Q	IN11-F470Q
IN11-F470R	IB11-1135	IN11-F470R	IN11-F470R	IN11-F470R	IN11-F470R
IN11-F470S	IB11-1136	IN11-F470S	IN11-F470S	IN11-F470S	IN11-F470S
IN11-F470T	IB11-1137	IN11-F470T	IN11-F470T	IN11-F470T	IN11-F470T
IN11-F470U	IB11-1138	IN11-F470U	IN11-F470U	IN11-F470U	IN11-F470U
IN11-F470V	IB11-1139	IN11-F470V	IN11-F470V	IN11-F470V	IN11-F470V
IN11-F470W	IB11-1140	IN11-F470W	IN11-F470W	IN11-F470W	IN11-F470W
IN11-F470X	IB11-1141	IN11-F470X	IN11-F470X	IN11-F470X	IN11-F470X
IN11-F470Y	IB11-1142	IN11-F470Y	IN11-F470Y	IN11-F470Y	IN11-F470Y
IN11-F470Z	IB11-1143	IN11-F470Z	IN11-F470Z	IN11-F470Z	IN11-F470Z

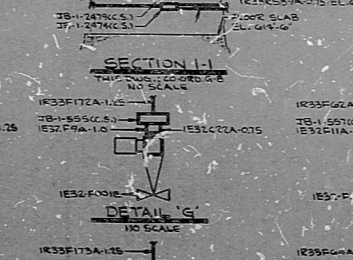


SECTION II

TOP TO BOTTOM

FLOOR SLAB

EL. 028'-0"

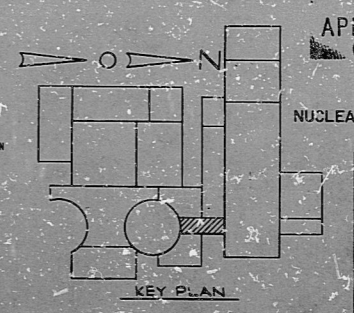


NOTES:

1. FOR LEGEND NOTES, REFERENCES, AND STANDARD DETAILS, SEE D-215-001.

2. THIS DRAWING TO BE WORKED IN CONJUNCTION WITH THE FOLLOWING ELECTRICAL SUPPORT DRAWING:

D-215-233, SHEET 02



PRC APERTURE CARD

NUCLEAR SAFETY RELATED

REVISION	NO.	DATE	BY	APPROVED
CONSTRUCTION	01			
LIMITED CONSTRUCTION AS NOTED				
PRELIMINARY NOT FOR CONSTRUCTION				
BIDDING PURPOSES				

DATE: 04-28-68

RELEASED FOR: ENGR.

THE CLEVELAND ELECTRIC ILLUMINATING COMPANY

PERRY NUCLEAR POWER PLANT

ELECTRICAL

CONDUIT LAYOUT

AUXILIARY BUILDING - STEAM TUNNEL - EL. 014'-0" AND EL. 020'-0"

NO.	DATE	BY	APPROVED
01	04-28-68		
02			
03			
04			
05			
06			
07			
08			
09			
10			

NO.	DATE	BY	APPROVED
01	04-28-68		
02			
03			
04			
05			
06			
07			
08			
09			
10			

END LMT A B STEAM TUNNEL

GILBERT ASSOCIATES, INC.

ENGINEERS AND ARCHITECTS

150 N. W. 10th St., Miami, Florida 33136

PROJECT: PERRY NUCLEAR POWER PLANT

DRAWING NO. 04-68-89

SHEET 02 OF 03

8212080686

Rids

