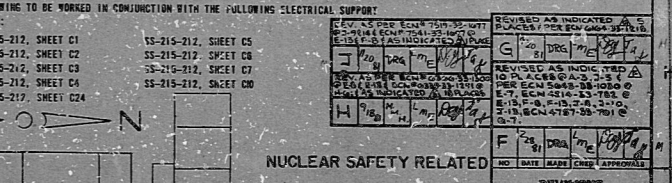


**PRC APERTURE CARD**

NOTES:

- FOR LEGEND, NOTES, REFERENCES, AND STANDARD DETAILS, SEE DWG. D-215-201.
- CONDUITS CONTINUED UP, SEE DWG. D-215-212.
- THIS DRAWING TO BE WORKED IN CONJUNCTION WITH THE FOLLOWING ELECTRICAL SUPPORT DRAWINGS:

VALVE	BOX	SEQUENCE NO.	CND. NO.	CND. NO. (SPEC.)	CND. NO. (CLOSE)
1061-F17B	101-109B	1061-F17A	1061-F17B	1061-F17C	1061-F17D
1061-F18C	101-109B	1061-F18A	1061-F18B	1061-F18C	1061-F18D
1061-F18B	101-109B	1061-F18A	1061-F18B	1061-F18C	1061-F18D
1061-F18A	101-109B	1061-F18A	1061-F18B	1061-F18C	1061-F18D
1061-F18D	101-109B	1061-F18A	1061-F18B	1061-F18C	1061-F18D
1061-F18E	101-109B	1061-F18A	1061-F18B	1061-F18C	1061-F18D
1061-F18F	101-109B	1061-F18A	1061-F18B	1061-F18C	1061-F18D
1061-F18G	101-109B	1061-F18A	1061-F18B	1061-F18C	1061-F18D
1061-F18H	101-109B	1061-F18A	1061-F18B	1061-F18C	1061-F18D
1061-F18I	101-109B	1061-F18A	1061-F18B	1061-F18C	1061-F18D
1061-F18J	101-109B	1061-F18A	1061-F18B	1061-F18C	1061-F18D
1061-F18K	101-109B	1061-F18A	1061-F18B	1061-F18C	1061-F18D
1061-F18L	101-109B	1061-F18A	1061-F18B	1061-F18C	1061-F18D
1061-F18M	101-109B	1061-F18A	1061-F18B	1061-F18C	1061-F18D
1061-F18N	101-109B	1061-F18A	1061-F18B	1061-F18C	1061-F18D
1061-F18O	101-109B	1061-F18A	1061-F18B	1061-F18C	1061-F18D
1061-F18P	101-109B	1061-F18A	1061-F18B	1061-F18C	1061-F18D
1061-F18Q	101-109B	1061-F18A	1061-F18B	1061-F18C	1061-F18D
1061-F18R	101-109B	1061-F18A	1061-F18B	1061-F18C	1061-F18D
1061-F18S	101-109B	1061-F18A	1061-F18B	1061-F18C	1061-F18D
1061-F18T	101-109B	1061-F18A	1061-F18B	1061-F18C	1061-F18D
1061-F18U	101-109B	1061-F18A	1061-F18B	1061-F18C	1061-F18D
1061-F18V	101-109B	1061-F18A	1061-F18B	1061-F18C	1061-F18D
1061-F18W	101-109B	1061-F18A	1061-F18B	1061-F18C	1061-F18D
1061-F18X	101-109B	1061-F18A	1061-F18B	1061-F18C	1061-F18D
1061-F18Y	101-109B	1061-F18A	1061-F18B	1061-F18C	1061-F18D
1061-F18Z	101-109B	1061-F18A	1061-F18B	1061-F18C	1061-F18D



PRC APERTURE CARD

NOTES:

- FOR LEGEND, NOTES, REFERENCES, AND STANDARD DETAILS, SEE DWG. D-215-201.
- CONDUITS CONTINUED UP, SEE DWG. D-215-212.
- THIS DRAWING TO BE WORKED IN CONJUNCTION WITH THE FOLLOWING ELECTRICAL SUPPORT DRAWINGS:

SHEET NO.	SHEET TITLE	DATE	BY	CHKD.	APP'D.
SS-215-212, SHEET C1					
SS-215-212, SHEET C2					
SS-215-212, SHEET C3					
SS-215-212, SHEET C4					
SS-215-212, SHEET C5					
SS-215-212, SHEET C6					
SS-215-212, SHEET C7					
SS-215-212, SHEET C8					

NUCLEAR SAFETY RELATED

DATE	RELEASED FOR	ENGR.

THE CLEVELAND ELECTRIC ILLUMINATING COMPANY

PERRY NUCLEAR POWER PLANT UNIT 1

ELECTRICAL CONDUIT LAYOUT

AUXILIARY BUILDING - WEST - EL. 574'-10"

NO.	REVISION	DATE	BY	CHKD.	APP'D.
1	ISSUED FOR CONSTRUCTION	11/10/54			

DESIGNED BY: G. L. ...

CHECKED BY: ...

APPROVED BY: ...

SCALE: 1/4" = 1'-0"

DWG. NO. D-215-212 N

NO.	REVISION	DATE	BY	CHKD.	APP'D.
1	ISSUED FOR CONSTRUCTION	11/10/54			

DESIGNED BY: G. L. ...

CHECKED BY: ...

APPROVED BY: ...

SCALE: 1/4" = 1'-0"

DWG. NO. D-215-212 N

Rids

8212080669

