

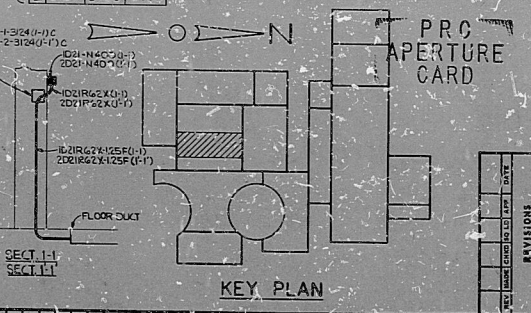
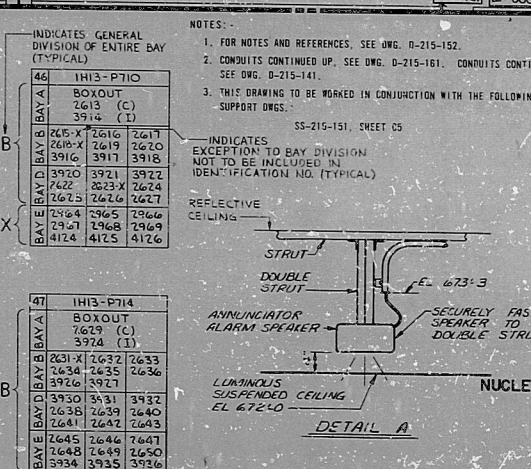
LEGEND

[Symbol] INDICATES EXCEPTION TO BAY DIVISION
 [Symbol] BAY DESIGNATION
 [Symbol] INDICATES GENERAL DIVISION OF ENTIRE BAY
 A-DIV A-YELLOW 'BLACK' LETTERS
 B-DIV B-BLUE 'WHITE' LETTERS
 C-DIV C-GREEN 'WHITE' LETTERS
 D-DIV D-ORANGE 'BLACK' LETTERS
 X-NON-CLASSIFIED 'BLACK' LETTERS

REV PER DWG. D-215-151; SH. 501 AT CORNER OF ELEC. EL. E14, F8, F9, G3-G5, G7, G11, G13, H7, J10, J12, K4, K7, K10, K12, K13.
 H REV PER DWG. D-215-151; SH. 501 AT CORNER OF ELEC. EL. E14, F8, F9, G3-G5, G7, G11, G13, H7, J10, J12, K4, K7, K10, K12, K13.
 G REV PER DWG. D-215-151; SH. 501 AT CORNER OF ELEC. EL. E14, F8, F9, G3-G5, G7, G11, G13, H7, J10, J12, K4, K7, K10, K12, K13.

[Symbol] BAY E SHOWN ON DWG. D-215-152
 [Symbol] BAY E SHOWN ON DWG. D-215-152

22 ZH13-P74B W BOX OUT 404 (C) 19 49 (T) 406 (C) 1531 (T)	23 ZH13-P74A W BOX OUT 404 (C) 19 49 (T) 406 (C) 1531 (T)	24 ZH13-P74C W BOX OUT 404 (C) 19 49 (T) 406 (C) 1531 (T)	25 ZH13-P74D W BOX OUT 404 (C) 19 49 (T) 406 (C) 1531 (T)	26 ZH13-P74E W BOX OUT 404 (C) 19 49 (T) 406 (C) 1531 (T)	27 ZH13-P74F W BOX OUT 404 (C) 19 49 (T) 406 (C) 1531 (T)	28 ZH13-P74G W BOX OUT 404 (C) 19 49 (T) 406 (C) 1531 (T)	29 ZH13-P74H W BOX OUT 404 (C) 19 49 (T) 406 (C) 1531 (T)	30 ZH13-P74I W BOX OUT 404 (C) 19 49 (T) 406 (C) 1531 (T)	31 ZH13-P74J W BOX OUT 404 (C) 19 49 (T) 406 (C) 1531 (T)	32 ZH13-P74K W BOX OUT 404 (C) 19 49 (T) 406 (C) 1531 (T)	33 ZH13-P74L W BOX OUT 404 (C) 19 49 (T) 406 (C) 1531 (T)	34 ZH13-P74M W BOX OUT 404 (C) 19 49 (T) 406 (C) 1531 (T)	35 ZH13-P74N W BOX OUT 404 (C) 19 49 (T) 406 (C) 1531 (T)	36 ZH13-P74O W BOX OUT 404 (C) 19 49 (T) 406 (C) 1531 (T)	37 ZH13-P74P W BOX OUT 404 (C) 19 49 (T) 406 (C) 1531 (T)	38 ZH13-P74Q W BOX OUT 404 (C) 19 49 (T) 406 (C) 1531 (T)	39 ZH13-P74R W BOX OUT 404 (C) 19 49 (T) 406 (C) 1531 (T)	40 ZH13-P74S W BOX OUT 404 (C) 19 49 (T) 406 (C) 1531 (T)	41 ZH13-P74T W BOX OUT 404 (C) 19 49 (T) 406 (C) 1531 (T)	42 ZH13-P74U W BOX OUT 404 (C) 19 49 (T) 406 (C) 1531 (T)	43 ZH13-P74V W BOX OUT 404 (C) 19 49 (T) 406 (C) 1531 (T)	44 ZH13-P74W W BOX OUT 404 (C) 19 49 (T) 406 (C) 1531 (T)	45 ZH13-P74X W BOX OUT 404 (C) 19 49 (T) 406 (C) 1531 (T)	46 ZH13-P74Y W BOX OUT 404 (C) 19 49 (T) 406 (C) 1531 (T)	47 ZH13-P74Z W BOX OUT 404 (C) 19 49 (T) 406 (C) 1531 (T)
---	---	---	---	---	---	---	---	---	---	---	---	---	---	---	---	---	---	---	---	---	---	---	---	---	---



REVISION	
CONSTRUCTION	5F-53
PRELIMINARY NOT FOR CONSTRUCTION BIDDING PURPOSES	
DATE	RELEASED FOR
THE CLEVELAND ELECTRIC ILLUMINATING COMPANY	
PERRY NUCLEAR POWER PLANT	
ELECTRICAL	
CONDUIT LAYOUT	
CONV. COMPLEX - EAST - EL. 654'-6"	
GILBERT ASSOCIATES, INC.	
ENGINEERS AND CONSULTANTS IN DESIGN	
DRAWING NUMBER	
04 4549 D-215-151	
REV	

END U T C C E A S T 4 5 4 9 D - 2 1 5 - 1 5 1

82-2080651

Rids

