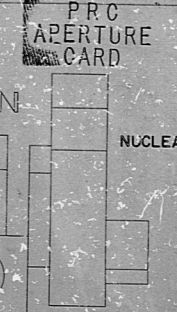
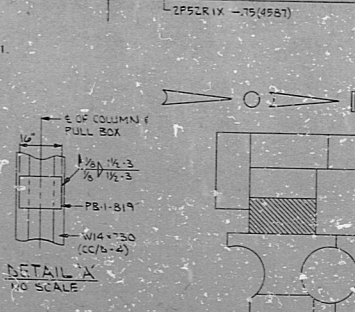


TYPICAL CONDUIT INSTALLATION FOR VALVE SOLENOID LIMIT SWITCHES

VALVE MFL NO.	BOX NO.	SOLENOID AND CND. NO.	LIMIT SWITCH CND. NO. (OPEN) / CND. NO. (CLOSED)
IP42-F09C	18-1057	IP42-F09C	IP42-C11X / IP42-N051
2P42-F09C	18-1234	2P42-F09C	2P42-C11X / 2P42-N051
601-F245	18-1100	601-F245	601-C24X / 601-N24X
601-F250	18-1100	601-F250	601-C24X / 601-N24X
601-F255	18-1100	601-F255	601-C24X / 601-N24X

- NOTES:
- FOR LEGEND, NOTES, REFERENCES, AND STANDARD DETAILS, SEE DWG. D-215-001.
  - CONDUITS CONTINUED UP, SEE DWG. D-215-101.
  - THIS DRAWING TO BE NOTED IN CONNECTION WITH THE FOLLOWING ELECTRICAL CONDUIT SUPPORT DRAWINGS:
    - SS-215-111, SHEET C3
    - SS-215-111, SHEET C4
    - SS-215-111, SHEET C5
    - SS-215-111, SHEET C6
    - SS-215-111, SHEET C7
    - SS-215-111, SHEET C8
    - SS-215-111, SHEET C9
    - SS-215-111, SHEET C10
    - SS-215-111, SHEET C11
    - SS-215-111, SHEET C12
    - SS-215-111, SHEET C13
    - SS-215-111, SHEET C14



PRC APERTURE CARD

NUCLEAR SAFETY RELATED

REVISIONS	
NO.	DESCRIPTION

DATE	RELEASED FOR	ENGR.
THE CLEVELAND ELECTRIC ILLUMINATING COMPANY		
PERRY NUCLEAR POWER PLANT		
ELECTRICAL		
CONDUIT LAYOUT		
CONTROL COMPLEX - EAST - EL. 574'-10"		
DRAWING NO.	04-4849-D-215-111	REV.

34

34

27

27

21

21

11

11

5.8

5.8

8.5

8.5

11

11

17

17

22

22

34

Rids

8212080610

