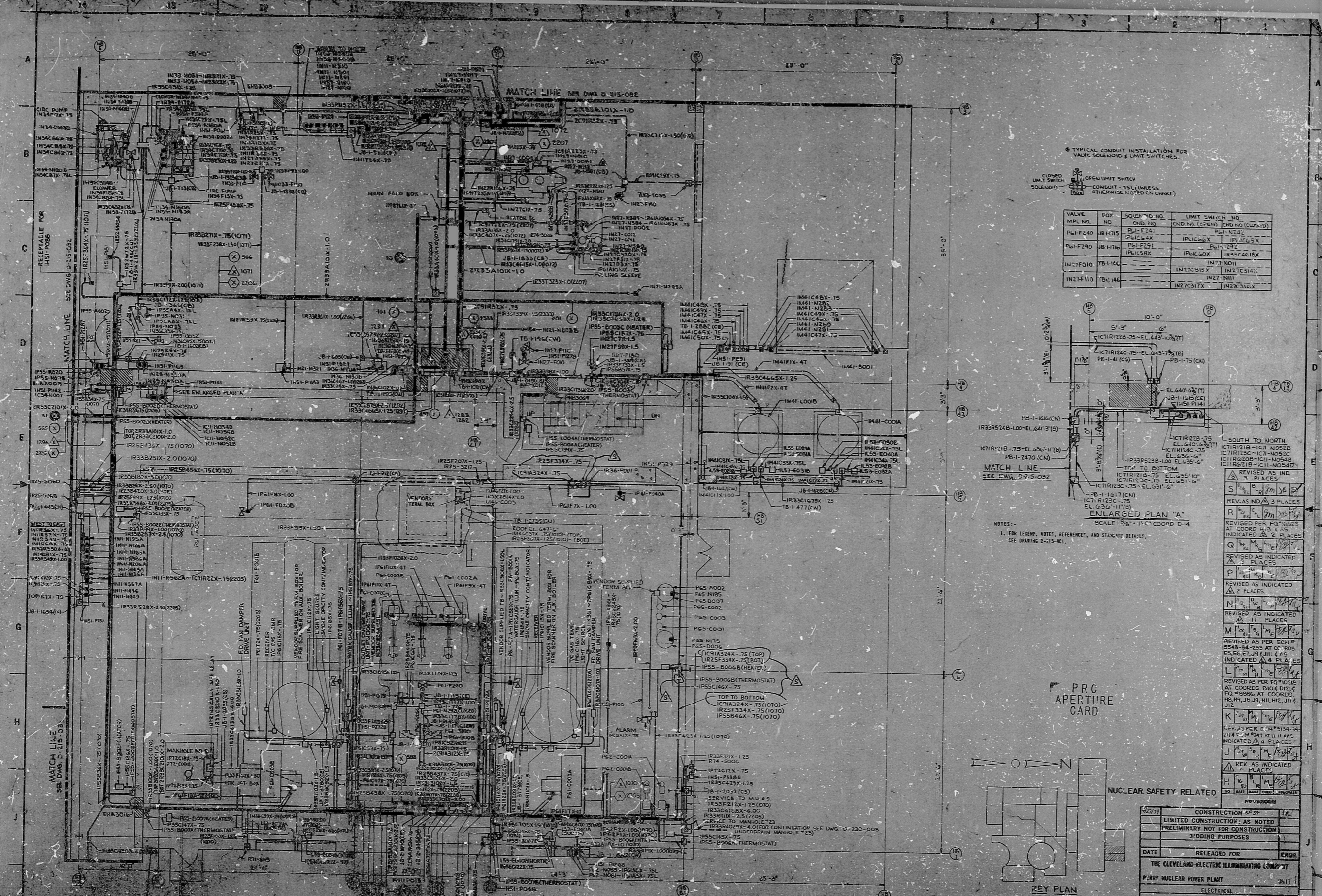


34  
22  
17  
11  
8.5  
11  
17  
22

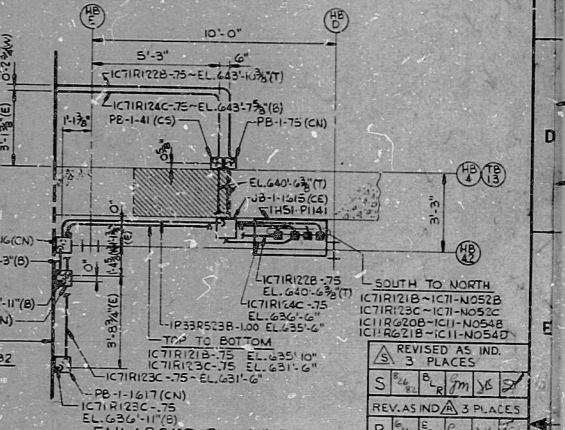
34  
22  
17  
11  
8.5  
11  
17  
22



TYPICAL CONDUIT INSTALLATION FOR VALVE, SOLENOID & LIMIT SWITCHES.

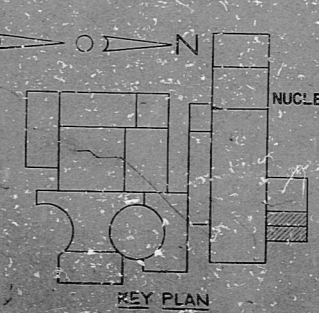
CLOSED LIMIT SWITCH  
 OPEN LIMIT SWITCH  
 CONDUIT WITH VALVE, SOLENOID, OR LIMIT SWITCH (UNLESS OTHERWISE NOTED ON CHART)

VALVE	BOX NO.	SOLENOID NO.	LIMIT SWITCH NO.
MPL NO.	CHD NO.	CHD NO. (OPEN)	CHD NO. (CLOSED)
IP6F240	UB-1715	IP6F240	IP6F240
IP6F290	UB-1716	IP6F290	IP6F290
IN2F310	TB-146	IN2F310	IN2F310
IN2F310	TB-146	IN2F310	IN2F310



NOTES:  
1. FOR LEGEND, NOTES, REFERENCE, AND STANDARD DETAILS, SEE DRAWING D-15-001.

PRG APERTURE CARD



NUCLEAR SAFETY RELATED

CONSTRUCTION SP38	1/2
LIMITED CONSTRUCTION: AS NOTED	
PRELIMINARY NOT FOR CONSTRUCTION	
BIDDING PURPOSES	
DATE RELEASED FOR	ENGR
THE CLEVELAND ELECTRIC ILLUMINATING COMPANY	
PERRY NUCLEAR POWER PLANT	UNIT 1
ELECTRICAL	
CONDUIT LAYOUT	
HEATER BAY - EAST - EL. 651'-6"	
QUALITY ASSURANCE DIV.	
DESIGNED AND CHECKED	
DATE	03-28-61
DRAWING NUMBER	D-213-061

REV.	AS INDICATED	PLACES
A	REV. AS INDICATED	2 PLACES
B	REV. AS INDICATED	1 PLACE
C	REV. AS INDICATED	1 PLACE
D	REV. AS INDICATED	1 PLACE
E	REV. AS INDICATED	1 PLACE
F	REV. AS INDICATED	1 PLACE
G	REV. AS INDICATED	1 PLACE
H	REV. AS INDICATED	1 PLACE
I	REV. AS INDICATED	1 PLACE
J	REV. AS INDICATED	1 PLACE
K	REV. AS INDICATED	1 PLACE

82.2080562

Rids

