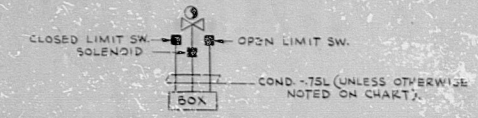
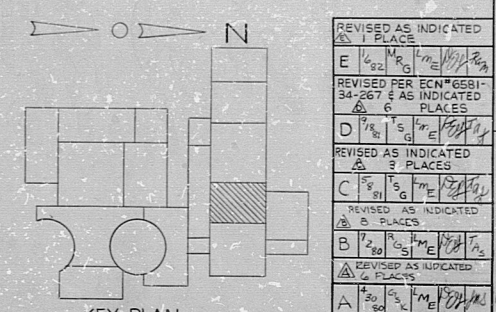


TYPICAL CONDUIT INSTALLATION FOR VALVE SOLENOID & LIMIT SWITCH.



VALVE	BOX	SOLENOID NO.	LIMIT SW. NO.
TYPE	NO.	CND. NO.	CND. NO. (OPEN) CND. NO. (CLOSED)
INZ1-F100A	JB-1-1491	INZ1-F102A	INZ1-N101A
INZ1-F100B	JB-1-1499	INZ1-F102B	INZ1-N101B
INZ1-F100C	JB-1-1440	INZ1-F102C	INZ1-N101C
INZ1-F100D	JB-1-1732	INZ1-F102D	INZ1-N101D
INZ1-F100E	JB-1-1719	INZ1-F102E	INZ1-N101E
INZ1-F100F	JB-1-1701	INZ1-F102F	INZ1-N101F
INZ1-F100G	JB-1-1702	INZ1-F102G	INZ1-N101G
INZ1-F100H	JB-1-1713	INZ1-F102H	INZ1-N101H
INZ1-F100I	JB-1-1643	INZ1-F102I	INZ1-N101I
INZ1-F100J	JB-1-1650	INZ1-F102J	INZ1-N101J
INZ1-F100K	JB-1-1715	INZ1-F102K	INZ1-N101K
INZ1-F100L	JB-1-1716	INZ1-F102L	INZ1-N101L
INZ1-F100M	JB-1-1717	INZ1-F102M	INZ1-N101M
INZ1-F100N	JB-1-1718	INZ1-F102N	INZ1-N101N
INZ1-F100O	JB-1-1719	INZ1-F102O	INZ1-N101O
INZ1-F100P	JB-1-1720	INZ1-F102P	INZ1-N101P
INZ1-F100Q	JB-1-1721	INZ1-F102Q	INZ1-N101Q
INZ1-F100R	JB-1-1722	INZ1-F102R	INZ1-N101R
INZ1-F100S	JB-1-1723	INZ1-F102S	INZ1-N101S
INZ1-F100T	JB-1-1724	INZ1-F102T	INZ1-N101T

- NOTES:
- FOR LEGEND, NOTES, REFERENCES, AND STANDARD DETAILS, SEE DWG. D-215-001.
 - CONDUITS CONTINUED UP, SEE DWG. D-215-043.
 - CONDUITS CONTINUED DOWN, SEE DWG. D-215-022.



NUCLEAR SAFETY RELATED REVISIONS

NO.	DATE	DESCRIPTION	BY	CHKD.
1	04/79	CONSTRUCTION	SP-54	ABC
2		LIMITED CONSTRUCTION: AS NOTED		
3		PRELIMINARY NOT FOR CONSTRUCTION		
4		BIDDING PURPOSES		

DATE	RELEASED FOR	ENGR.
	THE CLEVELAND ELECTRIC ILLUMINATING COMPANY	
	PERRY NUCLEAR POWER PLANT	UNIT 1
	ELECTRICAL	
	CONDUIT LAYOUT	
READING	TURBINE BUILDING EL. 624'-0"	
PA.	GILBERT ASSOCIATES, INC.	
DR.	ENGINEERS AND CONSULTANTS	
DATE	04/79	
SCALE	1/8" = 1'-0"	
NO.	04	4549
REV.	D-215-033	E
NO.	04549-000	DRAWING NUMBER
REV.		

P/C APERTURE CARD

82.2080518

RIDS

