

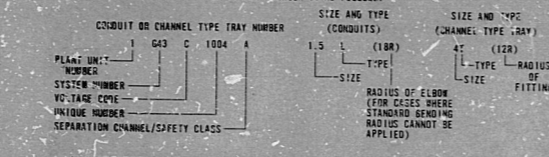
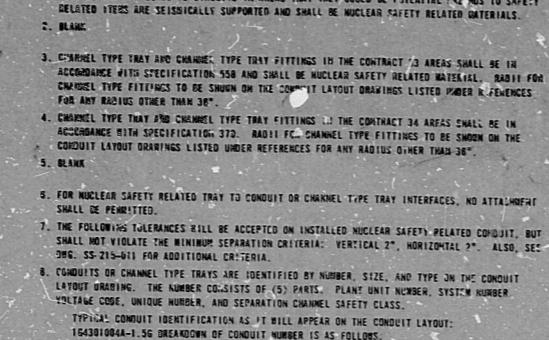
TABLE 1 VOLTAGE CODES - (SEE NOTE 8c)

CODE LETTER	DESCRIPTION
A	ALARM OR ANNUNCIATOR
B	120V AC SUPPLY FROM DISTRIBUTION PANELS
C	CONTROL, INTERLOCK AND INDICATOR
D	120V DC POWER
E	480V POWER
F	4KV POWER
H	4KV POWER
J	INTER-PLANT COMMUNICATIONS
K	120V/208V FROM LIGHTING PANELS
L	120 V AC POWER
R	ANALOG INSTRUMENTATION
T	THERMOCOUPLE INSTRUMENTATION
V	4KV AC VITAL BUS AND INVERTER
W	MAINTENANCE AND CALIBRATION

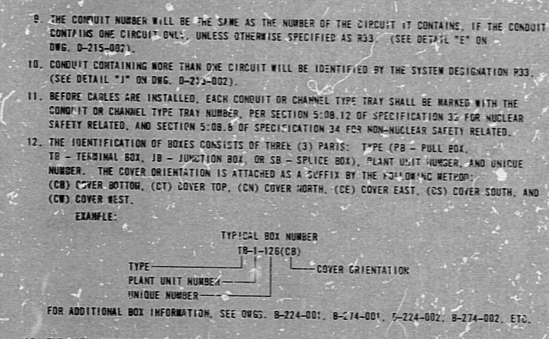
TABLE 2 CONDUIT TYPE CODES - (SEE NOTE 81)

CODE LETTER	DESCRIPTION
C	PVC
F	FLEXIBLE (GALVANIZED STEEL)
G	GALVANIZED (ASSURED UNLESS NOTED)
L	FLEXIBLE (LIGHTWEIGHT GALVANIZED)
V	CHANNEL TYPE TRAY
K	FLEXIBLE (LIGHTWEIGHT STAINLESS STEEL)

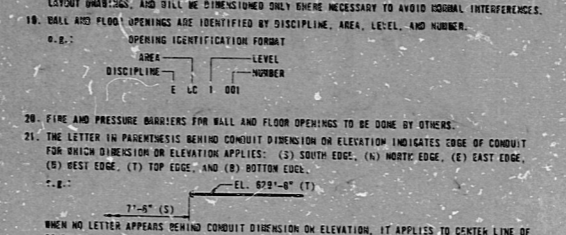
NOTES: 1. ALL RIGID CONDUIT, FLEXIBLE CONDUIT, CONDUIT FITTINGS, HOSES, AND RELATED MISCELLANEOUS MATERIALS SHALL BE IN ACCORDANCE WITH FEDERAL SPECIFICATIONS...



1. CHIT NUMBER IDENTIFIES WHICH PLANT UNIT OR SYSTEM THE CONDUIT IS ASSOCIATED WITH. 2. SYSTEM NUMBER IDENTIFIES THE MECHANICAL OR ELECTRICAL SYSTEM WITH WHICH THE CONDUIT IS ASSOCIATED...

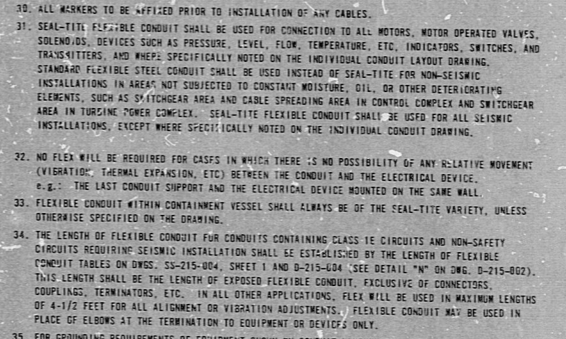


18. CONDUITS ON CHANNEL TYPE TRAYS WHICH CONTAIN NON-CLASS 1E CIRCUITS WHICH DO NOT PRESENT A HAZARD TO NUCLEAR SAFETY RELATED ITEMS MAY BE INSTALLED WITHOUT SEISMICALLY QUALIFIED SUPPORTS...

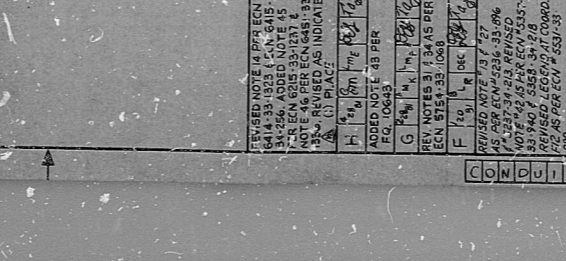
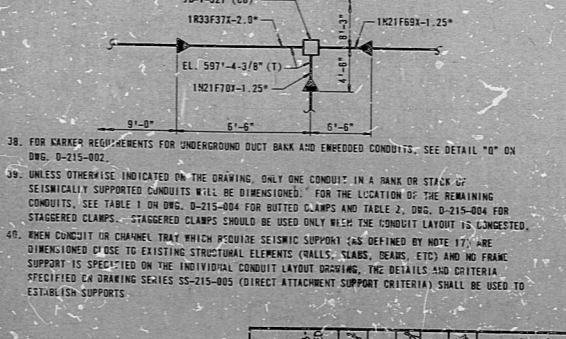


22. CONDUITS THAT ENTER SWITCHGEAR, LOAD CENTERS, MOTOR CONTROL CENTERS, OR FLOOR MOUNTED PANELS FROM BELOW FOR METHOD OF TERMINATING, SEE DETAIL 'M' ON DWG. D-215-002.

26. PULL BOXES SHALL BE LOCATED BY THE FIELD APPROXIMATELY AS SHOWN ON THE CONDUIT LAYOUT DRAWINGS. PULL BOXES MUST BE INSTALLED PER CONDUIT SUPPORT DRAWING, SERIES SS-215 AND SS-216...



35. FOR GROUNDING REQUIREMENTS OF EQUIPMENT SHOWN ON CONDUIT LAYOUT DRAWINGS, SEE GROUNDING DRAWINGS, SERIES D-210 AND D-209.



41. FOR ADDITIONAL NOTES AND REFERENCES FOR SEISMIC CONDUIT SUPPORTS, SEE DRAWING SERIES SS-215-014.

42. ALL HOLES PUNCHED WITH INSTRUMENT SIZE HOLES WITH THROUGH INSERT PLUGS. A MAXIMUM OF 3 (THREE) HOLES MAY BE PUNCHED IN ANY ONE BOX. HOLES IN BOXES CREATED BY ABANDONED TRAYS SHALL BE PLUGGED WITH RIVETS OR EQUAL.

46. FOR TYPICAL ATTACHMENT DETAILS OF NON-SEISMIC CONDUIT TO THE CONTAINMENT VESSEL LINER, SEE DETAIL 'EEN' ON DWG. D-215-002, SHEET 2. FOR TYPICAL ATTACHMENT DETAILS OF NON-SEISMIC NON-CLASS 1E CONDUIT TO THE DRYWELL LINER AND BISHIELD WALL, SEE DETAILS 'G-D' AND 'M-M', RESPECTIVELY, ON DWG. D-215-002, SHEET 3.

49. THE CONTRACTOR SHALL USE ONLY MALLEABLE IRON OR STEEL CONDUITS ON ALL SAFETY RELATED CONDUIT.

PRC APERTURE CARD

NUCLEAR SAFETY RELATED

CONSTRUCTION SP 33-N-34 LIMITED CONSTRUCTION; AS NOTED PRELIMINARY NOT FOR CONSTRUCTION BIDDING PURPOSES

THE CLEVELAND ELECTRIC ILLUMINATING COMPANY PERRY NUCLEAR POWER PLANT UNITS 1 & 2

GILBERT ASSOCIATES, INC. ENGINEERS AND CONSULTANTS

ADDED NOTE #49 PER ECN #9142-33-0020 N 1/2 RFL 7/6/50 REV. NOTE #18 PER ECN #8228-33-1936 M 1/2 RFL 7/6/50 REV. NOTE #11 PER ECN #680-33-1930 REV. NOTE #1 PER ECN #548-33-1936 NOTE #48 PER ECN #200-33-1855 REV. NOTE #18 PER ECN #200-33-1855 REV. NOTE #18 PER ECN #744-33-4216 NOTE 46 45 PER ECN #645-33-346 J 1/2 RFL 7/6/50

RIDS

82-2080405

