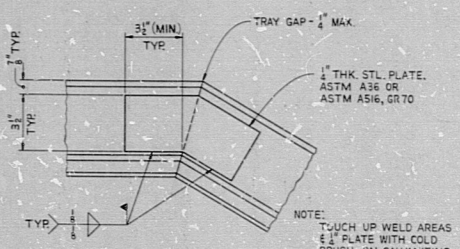


SECTION 1-1
(SECTION THRU TRAY)
SCALE: 1" = 1'-0"

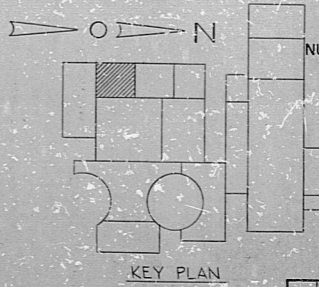


SPLICE PLATE DETAIL
SCALE: 1" = 1'-0"

NOTES:
1. FOR LEGEND, NOTES, REFERENCES, AND STANDARD DETAILS, SEE DWG. D-214-001.
2. TRAY SYMBOL WITH (■) INDICATED TRAY IS 5" DEEP. (INSIDE DIMENSION).

| |
|---|
| REVISED TRAYS #3347 I P121 AT COORD. G11 ADDED SECTION 1-1 AT COORDS. B2, B3, B4, B5 AND SPLICE PLATE DETAIL AT COORDS. D2, D3 I D4 AS PER FIG. #19022. |
| H 1/2" MIN. EL. 629'-10" |
| REVISED TRAY #4727 AT COORD. G9 |
| G 1/2" MIN. EL. 629'-10" |
| REVISED TRAY #4726 AT COORD. G-8 |
| F 1/2" MIN. EL. 629'-10" |
| REVISED TRAY #4727 AT COORD. G-8 REVISOR TRAY #3347 (BARRELER) AT COORD. G-10 |
| E 1/2" MIN. EL. 629'-10" |
| ADDED NOTE #2, ADDED BARRELIERS AT COORD. A G-8 THRU G-13, ADDED MATCH LINE AT COORD. G-14, & F-14. ADDED TRAY #140 AT COORD. G-8, TRAY #2727 AT COORD. G-8 THRU G-14 TRAY #3347 AT COORD. G-9 THRU G-14. TRAY #3348 AT COORD. G-4 & G-11. TRAY #3348 AT COORD. G-11 |
| D 1/2" MIN. EL. 629'-10" |
| REVISED TRAY NUMBERS |
| C 1/2" MIN. EL. 629'-10" |
| REVISED TRAYS #3338 I #3014 AT COORD. G11 |
| B 1/2" MIN. EL. 629'-10" |
| CHECKED DRAWING RELEASED FOR CONSTRUCTION REVISIONS 2807 2808 2809 2808B 2804 2805 2804 2805 3706 3707 3708 4007 4205 4204 AT COORDS D5 D15 D6 D9 D15 D19 F11 F8 F15 G15 G18 G19 G11 G12 G15 H18 H19 H11 I14 I15 REVISOR OPENINGS EPD1026 EDG1028 ED-042 EDG1048 EDG1046 EDG1047 AT COORDS. D2 E2 E3 I19 I11 I12 |
| A 1/2" MIN. EL. 629'-10" |

PRC
APERTURE
CARD



KEY PLAN

| REVISIONS | |
|---|----------------------------------|
| 63077 | CONSTRUCTION |
| | LIMITED CONSTRUCTION - AS NOTED |
| | PRELIMINARY NOT FOR CONSTRUCTION |
| | BIDDING PURPOSES SP. 55 |
| DATE | RELEASED FOR ENGR. |
| THE CLEVELAND ELECTRIC ILLUMINATING COMPANY | |
| PERRY NUCLEAR POWER PLANT UNIT 2 | |
| ELECTRICAL | |
| CABLE TRAY LAYOUT | |
| DIESEL GENERATOR BUILDING - EL. 920'-6" | |
| DRAWING NO. | GILBERT ASSOCIATES, INC. |
| ENGINEER | ENGINEERS AND CONSULTANTS |
| CHECKED | ARCHITECTURAL |
| CIVIL | STRUCTURAL |
| ELECTRICAL | Mechanical |
| PLUMBING | PIPELINES |
| SCALE | 1/4" = 1'-0" |
| DATE | 04 4549 D-214-612 H |
| NO. | 04549-000 |
| DRAWING NUMBER | KEY |

TRAY LAYOUT DIESEL GENERATOR BUILDING

8212680377

RIDS

