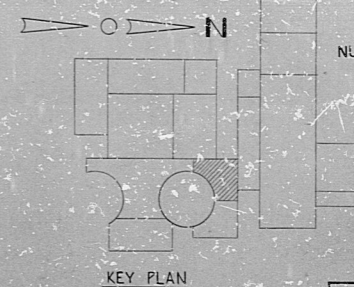


SEE AUXILIARY PLAN 'D' ON DWG. D-214-602 FOR ADDITIONAL TRAYS BETWEEN COL. LINES AX-1 & AX-2 AND AX-E & AX-A

- ADDED NOTE #2 AT COORD. H4.
- D 1/8" RLS 1/24/60
- ADDED TRAY #582 (18" WIDE) AT COORD. B13 AS PER F015308.
- N 1/8" RLS 1/24/60
- REVISED TRAYS #1204 #1208 AT COORD. B4.
- ADDED REFERENCE AT COORDS. B3 & B4.
- M 1/8" RLS 1/24/60
- ADDED TRAYS #581 & #582 AT COORD. B13.
- L 1/8" RLS 1/24/60
- ADDED TRAY #580 & REV. TRAY #515 AT COORD. B5.
- ADDED TRAYS #583 & #584 AT COORD. B5, B6, B7, B8, B9. ADDED TRAY #585 FROM TRAY #584 AT COORD. B10, B11, B12, B13, B14.
- K 1/8" RLS 1/24/60
- REVISED TRAY NUMBERS.
- J 1/8" RLS 1/24/60
- REVISED TRAY #582 AT COORD. F1. ADDED TRAY NUMBERS AND SYMBOLS AT COORD. D6.
- H 1/8" RLS 1/24/60
- REVISED TRAY NUMBERS.
- G 1/8" RLS 1/24/60
- ADDED DETAIL 'C' REFERENCE AT COORDS. H4 & H5. REVISED TRAY #302 AT COORDS. H4 & H5. TRAY #1802 AT COORD. F1. ADDED TRAYS #311, #312 AT COORD. F1. REVISED TRAY #410 AT COORD. H1. REVISED TRAYS #415, #416, #417, #418, #419, #420, #421, #422, #423, #424, #425, #426, #427, #428, #429, #430, #431, #432, #433, #434, #435, #436, #437, #438, #439, #440 AT COORD. B5.
- F 1/8" RLS 1/24/60
- CHANGED OPENING EPAB3007 & COMPLETED OPENING EPAB3006 AT COORD. B5. ADDED TRAY #437 AT COORDS. B1, B2, B3, B4, B5, B6, B7, B8, B9, B10, B11, B12, B13, B14.
- E 1/8" RLS 1/24/60
- CHANGED OPENING EPAB3010 TO EPAB3013. REVISED TRAYS #52, #1802 & #1602 AT COORDS. C14 & E10, E11 & E12. REVISED TRAY DIMENSIONS AT COORDS. H4 & H5. RELEASED FOR CONSTRUCTION.
- D 1/8" RLS 1/24/60
- CHANGED OPENING EPAB3001 TO EPAB3007. REVISED TRAY DIMENSIONS & WALL THICKNESS AT COORD. B5. ADDED TRAY #437 AT COORDS. B1, B2, B3, B4, B5, B6, B7, B8, B9, B10, B11, B12, B13, B14.
- C 1/8" RLS 1/24/60
- REVISED TRAY NUMBERS. REVISED TRAYS AT COORDS. AG, AH, AS, BA, C1, & C14.
- B 1/8" RLS 1/24/60
- REVISED TRAY NUMBERS. REVISED TRAYS AT COORD. F1.
- A 1/8" RLS 1/24/60
- NO. 101 (BASE CODE APPROVAL)

- NOTES:
- FOR LEGEND, NOTES, REFERENCES, AND STANDARD DETAILS, SEE DWG. D-214-001.
 - THE FOLLOWING TRAYS MAY REQUIRE TWO INCH SIDE RAIL EXTENSIONS: REF. (F113), 966 (B16), 1206 (B14), 1208 (B14), 1275 (B11), 1276 (B11), 1277 (B16), 1278 (B10), AND 1279 (B12).



REVISIONS	
1/24/60	CONSTRUCTION
	LIMITED CONSTRUCTION: AS NOTED
1/24/60	PRELIMINARY NOT FOR CONSTRUCTION
	BIDDING PURPOSES 5/23/60
DATE	RELEASED FOR ENGR.
THE CLEVELAND ELECTRIC ILLUMINATING COMPANY	
PERRY NUCLEAR POWER PLANT UNIT 1	
ELECTRICAL	
CABLE TRAY LAYOUT	
AUXILIARY BUILDING - WEST - EL. 620'-0"	
READING	GILBERT ASSOCIATES, P.C.
DATE	ENGINEER APPROVAL
DATE	ARCHITECTURAL
DATE	METALLURGICAL
DATE	MATERIALS
DATE	MEDICAL ENVIRONMENTAL
DATE	PLUMBING
DATE	MECHANICAL
DATE	ELECTRICAL
DATE	GENERAL CONTRACTOR
DATE	OWNER
SCALE	1" = 1'-0"
NO.	4549
DWG. NO.	D-214-232 P
DATE	1/24/60
NO.	101 (BASE CODE APPROVAL)

34"
22"
17"
11"
8.5"
11"
8.5"
11"
17"
22"
34"

34"
22"
17"
11"
8.5"
11"
17"
22"
34"

TRAY C V T A B WEST EL 620'-0"

82.12080253

RDS

