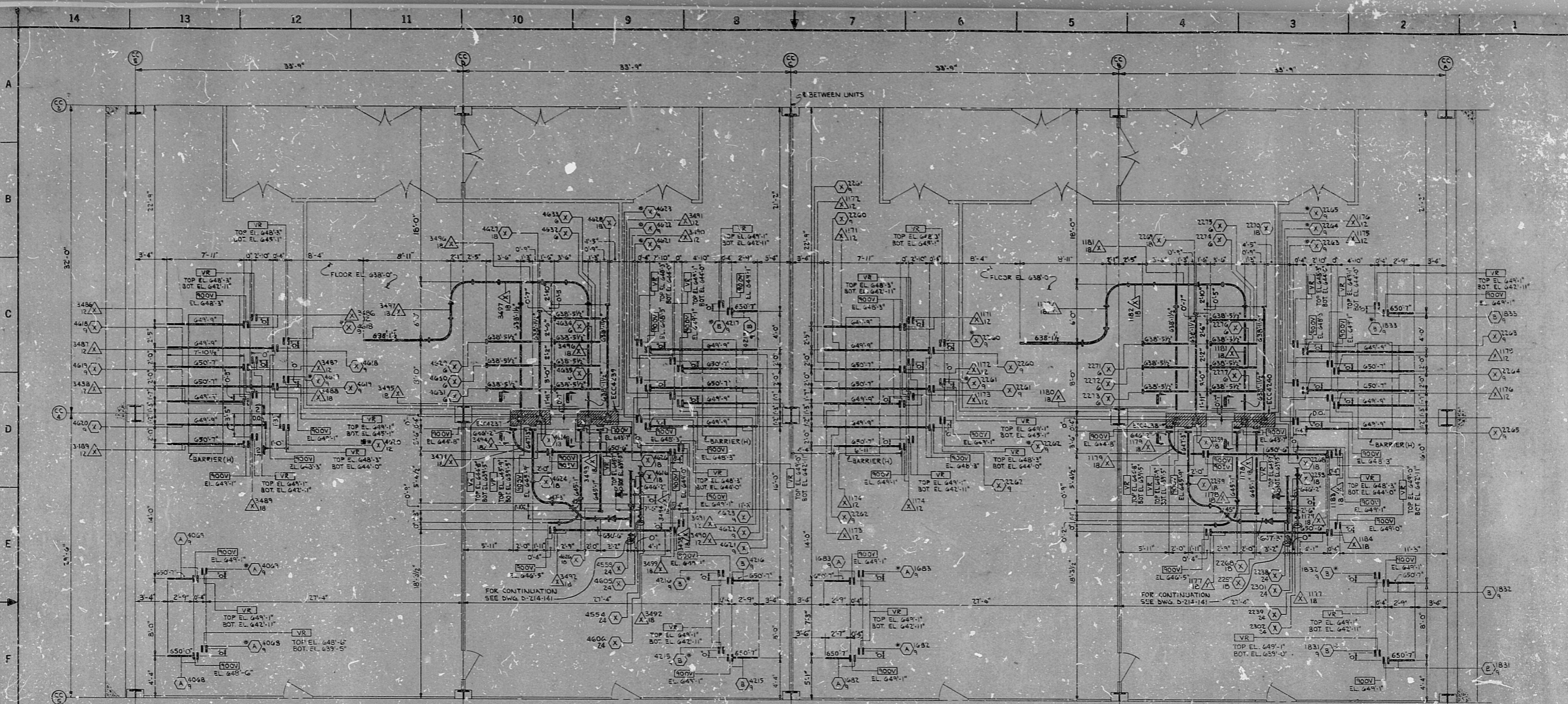


34

34



22"

22"

17"

17"

11"

11"

8.5"

8.5"

8.5"

8.5"

11"

11"

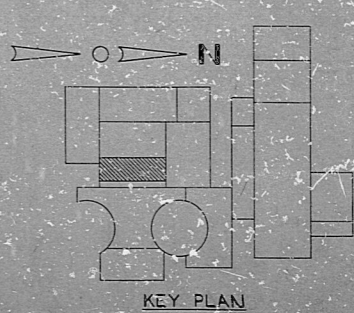
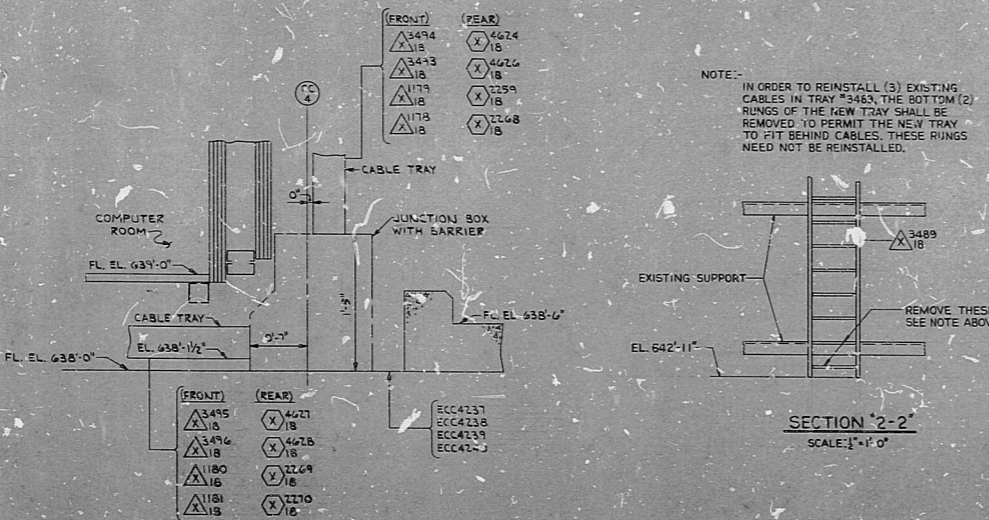
17"

17"

22"

22"

- NOTES:
- 1. FOR LEGEND, NOTES, REFERENCES AND STANDARD DETAILS, SEE PGS. D-214-001.
  - 2. TRAY SYMBOLS WITH ASTERISK (\*) INDICATES INSTRUMENT TRAY WITHOUT A SOLID BOTTOM COVER (TO ACCOMMODATE CABLES LEAVING TRAY BETWEEN BOTTOM RUNS).
  - 3. THIS DRAWING TO BE WORKED IN CONJUNCTION WITH DWGS. D-214-141 AND D-214-142.
  - 4. ALL TRAY FITTING RADIUS ON THIS DRAWING ARE 12".
  - 5. TRAY SYMBOLS WITH (M) INDICATES TRAYS ARE 5" DEEP. (INCLUDE DIMENSION).



NUCLEAR SAFETY RELATED	
NO.	DATE

REVISIONS	
02/13/75	CONSTRUCTION SP. 33
	LIMITED CONSTRUCTION: AS NOTED
	PRELIMINARY NOT FOR CONSTRUCTION
	BIDDING PURPOSES

DATE	RELEASED FOR	ENGR.

PROJECT		CONTROL COMPLEX - EAST - AUXILIARY PL. - E. 638'-0"		
DRAWING TITLE		CABLE TRAY LAYOUT		
DRAWING NUMBER		D-214-144 H		
SCALE		AS SHOWN		
DATE		04 4549 D-214-144 H		
PROJECT		PERRY NUCLEAR POWER PLANT		
SHEET		NITS 1 & 2		
CONTRACT				
CLIENT		THE CLEVELAND ELECTRIC ILLUMINATION COMPANY		
DESIGNER		QUENTZ ASSOCIATES, INC.		
CHECKER				
APPROVER				

821208 0253

RIDS

