

34"

34"

22"

22"

17"

17"

11"

11"

8.5"

8.5"

8.5"

8.5"

11"

11"

17"

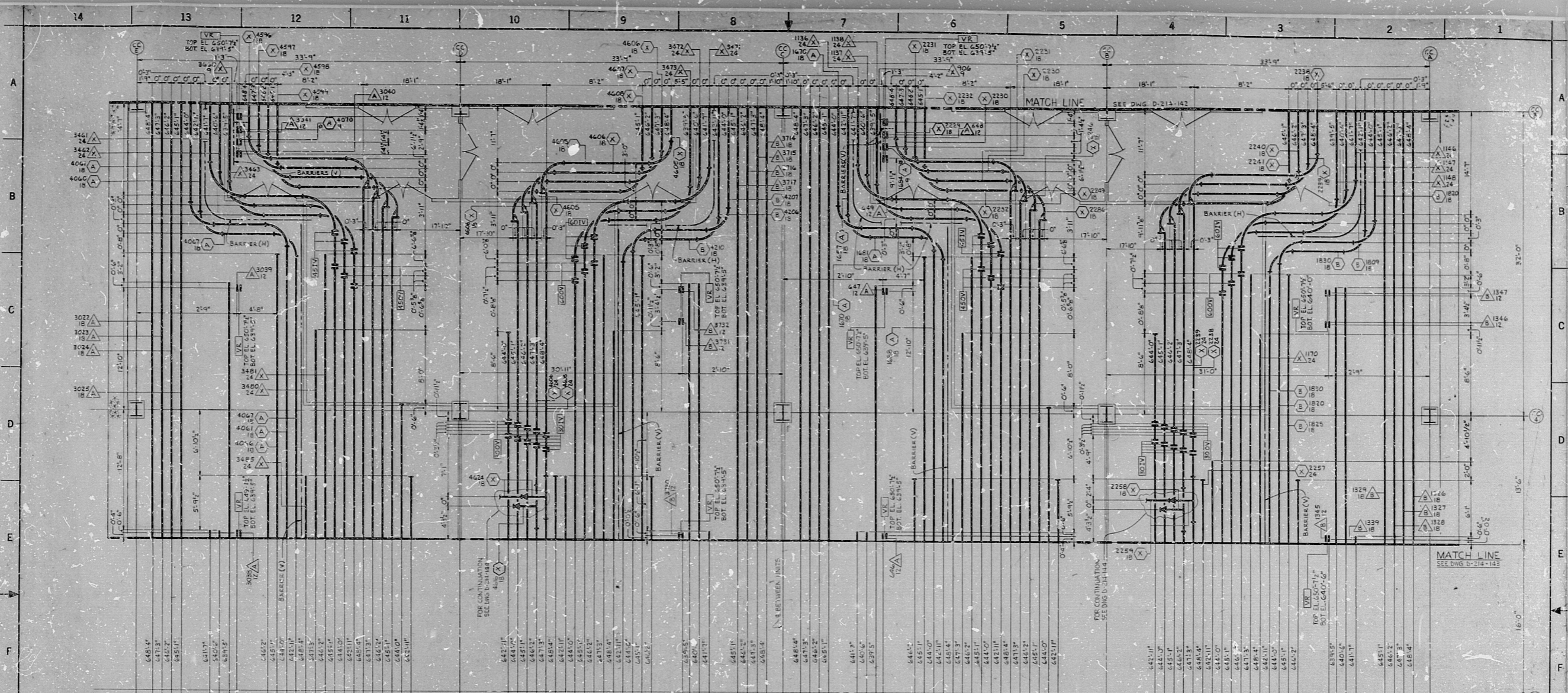
17"

22"

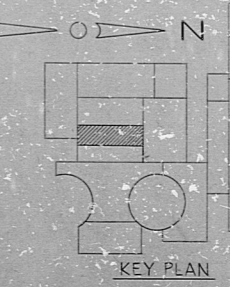
22"

34"

34"



- NOTES:
1. FOR LEGEND, NOTES, REFERENCES AND STANDARD DETAILS SEE DWG. D-214-001.
 2. THAT SYMBOLS WITH ASTERISK (*) INDICATES INSTRUMENT TRAY WITHOUT A SOLID BOTTOM COVER (TO ACCOMMODATE CABLES LEAVING TRAY BETWEEN BOTTOM ROOF) 3.
 3. THIS DRAWING TO BE WORKED IN CONJUNCTION WITH DWG. D-214-141.



PRO APERTURE CARD

NUCLEAR SAFETY RELATED

NO.	DATE	BY	CHECK	APPROVAL
REVISIONS				
CONSTRUCTION LIMITED CONSTRUCTION, AS NOTED				
PHLEMINARY NOT FOR CONSTRUCTION				
BIDDING PURPOSES SP 33				
DATE	RELEASED FOR	ENGR.		
THE CLEVELAND ELECTRIC ILLUMINATING COMPANY				
PERRY NUCLEAR POWER PLANT UNITS 1 & 2				
ELECTRICAL				
CABLE TRAY LAYOUT				
CONTROL COMPLEX EAST, EL. 628'-6"				
GILBERT ASSOCIATES, INC.				
ENGINEERS AND CONSULTANTS				
DESIGNER	CHECKED	APPROVED	CYCL.	ELECTRICAL
DATE	DATE	DATE	DATE	DATE
12/7/70	12/7/70	12/7/70	12/7/70	12/7/70
DRAWING NO. 4549 D-214-141 G				
DRAWING NUMBER				

REVISION	DATE	BY	REASON
1	12/7/70	JL	ISSUED FOR CONSTRUCTION
2	12/7/70	JL	ISSUED FOR CONSTRUCTION
3	12/7/70	JL	ISSUED FOR CONSTRUCTION
4	12/7/70	JL	ISSUED FOR CONSTRUCTION
5	12/7/70	JL	ISSUED FOR CONSTRUCTION
6	12/7/70	JL	ISSUED FOR CONSTRUCTION
7	12/7/70	JL	ISSUED FOR CONSTRUCTION
8	12/7/70	JL	ISSUED FOR CONSTRUCTION
9	12/7/70	JL	ISSUED FOR CONSTRUCTION
10	12/7/70	JL	ISSUED FOR CONSTRUCTION
11	12/7/70	JL	ISSUED FOR CONSTRUCTION
12	12/7/70	JL	ISSUED FOR CONSTRUCTION
13	12/7/70	JL	ISSUED FOR CONSTRUCTION
14	12/7/70	JL	ISSUED FOR CONSTRUCTION
15	12/7/70	JL	ISSUED FOR CONSTRUCTION
16	12/7/70	JL	ISSUED FOR CONSTRUCTION
17	12/7/70	JL	ISSUED FOR CONSTRUCTION
18	12/7/70	JL	ISSUED FOR CONSTRUCTION
19	12/7/70	JL	ISSUED FOR CONSTRUCTION
20	12/7/70	JL	ISSUED FOR CONSTRUCTION
21	12/7/70	JL	ISSUED FOR CONSTRUCTION
22	12/7/70	JL	ISSUED FOR CONSTRUCTION
23	12/7/70	JL	ISSUED FOR CONSTRUCTION
24	12/7/70	JL	ISSUED FOR CONSTRUCTION
25	12/7/70	JL	ISSUED FOR CONSTRUCTION
26	12/7/70	JL	ISSUED FOR CONSTRUCTION
27	12/7/70	JL	ISSUED FOR CONSTRUCTION
28	12/7/70	JL	ISSUED FOR CONSTRUCTION
29	12/7/70	JL	ISSUED FOR CONSTRUCTION
30	12/7/70	JL	ISSUED FOR CONSTRUCTION
31	12/7/70	JL	ISSUED FOR CONSTRUCTION
32	12/7/70	JL	ISSUED FOR CONSTRUCTION
33	12/7/70	JL	ISSUED FOR CONSTRUCTION
34	12/7/70	JL	ISSUED FOR CONSTRUCTION
35	12/7/70	JL	ISSUED FOR CONSTRUCTION
36	12/7/70	JL	ISSUED FOR CONSTRUCTION
37	12/7/70	JL	ISSUED FOR CONSTRUCTION
38	12/7/70	JL	ISSUED FOR CONSTRUCTION
39	12/7/70	JL	ISSUED FOR CONSTRUCTION
40	12/7/70	JL	ISSUED FOR CONSTRUCTION
41	12/7/70	JL	ISSUED FOR CONSTRUCTION
42	12/7/70	JL	ISSUED FOR CONSTRUCTION
43	12/7/70	JL	ISSUED FOR CONSTRUCTION
44	12/7/70	JL	ISSUED FOR CONSTRUCTION
45	12/7/70	JL	ISSUED FOR CONSTRUCTION
46	12/7/70	JL	ISSUED FOR CONSTRUCTION
47	12/7/70	JL	ISSUED FOR CONSTRUCTION
48	12/7/70	JL	ISSUED FOR CONSTRUCTION
49	12/7/70	JL	ISSUED FOR CONSTRUCTION
50	12/7/70	JL	ISSUED FOR CONSTRUCTION
51	12/7/70	JL	ISSUED FOR CONSTRUCTION
52	12/7/70	JL	ISSUED FOR CONSTRUCTION
53	12/7/70	JL	ISSUED FOR CONSTRUCTION
54	12/7/70	JL	ISSUED FOR CONSTRUCTION
55	12/7/70	JL	ISSUED FOR CONSTRUCTION
56	12/7/70	JL	ISSUED FOR CONSTRUCTION
57	12/7/70	JL	ISSUED FOR CONSTRUCTION
58	12/7/70	JL	ISSUED FOR CONSTRUCTION
59	12/7/70	JL	ISSUED FOR CONSTRUCTION
60	12/7/70	JL	ISSUED FOR CONSTRUCTION
61	12/7/70	JL	ISSUED FOR CONSTRUCTION
62	12/7/70	JL	ISSUED FOR CONSTRUCTION
63	12/7/70	JL	ISSUED FOR CONSTRUCTION
64	12/7/70	JL	ISSUED FOR CONSTRUCTION
65	12/7/70	JL	ISSUED FOR CONSTRUCTION
66	12/7/70	JL	ISSUED FOR CONSTRUCTION
67	12/7/70	JL	ISSUED FOR CONSTRUCTION
68	12/7/70	JL	ISSUED FOR CONSTRUCTION
69	12/7/70	JL	ISSUED FOR CONSTRUCTION
70	12/7/70	JL	ISSUED FOR CONSTRUCTION
71	12/7/70	JL	ISSUED FOR CONSTRUCTION
72	12/7/70	JL	ISSUED FOR CONSTRUCTION
73	12/7/70	JL	ISSUED FOR CONSTRUCTION
74	12/7/70	JL	ISSUED FOR CONSTRUCTION
75	12/7/70	JL	ISSUED FOR CONSTRUCTION
76	12/7/70	JL	ISSUED FOR CONSTRUCTION
77	12/7/70	JL	ISSUED FOR CONSTRUCTION
78	12/7/70	JL	ISSUED FOR CONSTRUCTION
79	12/7/70	JL	ISSUED FOR CONSTRUCTION
80	12/7/70	JL	ISSUED FOR CONSTRUCTION
81	12/7/70	JL	ISSUED FOR CONSTRUCTION
82	12/7/70	JL	ISSUED FOR CONSTRUCTION
83	12/7/70	JL	ISSUED FOR CONSTRUCTION
84	12/7/70	JL	ISSUED FOR CONSTRUCTION
85	12/7/70	JL	ISSUED FOR CONSTRUCTION
86	12/7/70	JL	ISSUED FOR CONSTRUCTION
87	12/7/70	JL	ISSUED FOR CONSTRUCTION
88	12/7/70	JL	ISSUED FOR CONSTRUCTION
89	12/7/70	JL	ISSUED FOR CONSTRUCTION
90	12/7/70	JL	ISSUED FOR CONSTRUCTION
91	12/7/70	JL	ISSUED FOR CONSTRUCTION
92	12/7/70	JL	ISSUED FOR CONSTRUCTION
93	12/7/70	JL	ISSUED FOR CONSTRUCTION
94	12/7/70	JL	ISSUED FOR CONSTRUCTION
95	12/7/70	JL	ISSUED FOR CONSTRUCTION
96	12/7/70	JL	ISSUED FOR CONSTRUCTION
97	12/7/70	JL	ISSUED FOR CONSTRUCTION
98	12/7/70	JL	ISSUED FOR CONSTRUCTION
99	12/7/70	JL	ISSUED FOR CONSTRUCTION
100	12/7/70	JL	ISSUED FOR CONSTRUCTION

82:2080220

RIDS

