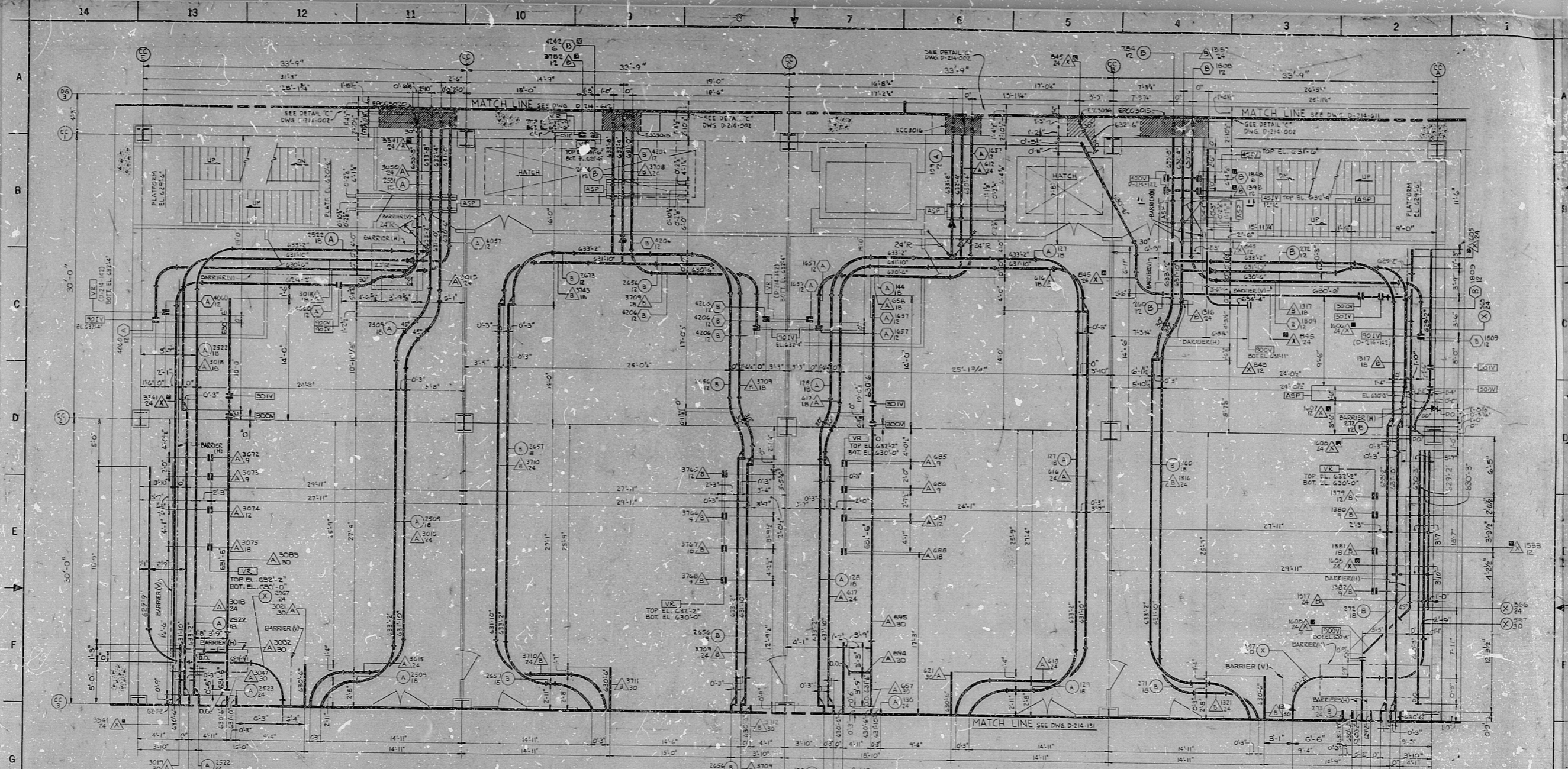
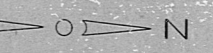
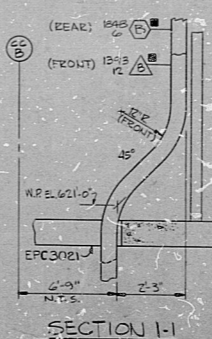


34"

34"



- NOTES:
- 1. FOR LEGEND, NOTES, REFERENCES, AND STANDARD DETAILS. SEE DWG. D-214-131
 - 2. TRAY SYMBOLS WITH (•) INDICATES TRAYS ARE 5° STEEP (INSIDE DIMENSION).



PRC
APERTURE
CARD

NUCLEAR SAFETY RELATED

REVISIONS	DATE	BY	CHKD	APPV
11-27-71				
12-4-76				
CONSTRUCTION				
LIMITED CONSTRUCTION AS NOTED				
PRELIMINARY NOT FOR CONSTRUCTION				
BINDING PURPOSES ONLY				
DATE RELEASED FOR ENGR.				
THE CLEVELAND ELECTRIC ILLUMINATING COMPANY				
PERRY NUCLEAR POWER PLANT				
ELECTRICAL UNITS 1 & 2				
CABLE TRAY LAYOUT				
CONTROL COMPLEX - WEST - EL. 620'-6"				
GILBERT ASSOCIATES, INC.				
ENGINEERS AND CONSULTANTS				
DRAWING NUMBER: D-214-132				
REV				

REVISIONS:

- 1. REVISED TRAYS FOR 10#4 AT COORD. B11 AND TRAY 2205 AT COORD. C11 AS NOTED.
- 2. REVISED TRAYS FOR 10#4 AT COORD. B11 AND TRAY 2205 AT COORD. C11 AS NOTED.
- 3. REVISED TRAYS FOR 10#4 AT COORD. B11 AND TRAY 2205 AT COORD. C11 AS NOTED.
- 4. REVISED TRAYS FOR 10#4 AT COORD. B11 AND TRAY 2205 AT COORD. C11 AS NOTED.
- 5. REVISED TRAYS FOR 10#4 AT COORD. B11 AND TRAY 2205 AT COORD. C11 AS NOTED.
- 6. REVISED TRAYS FOR 10#4 AT COORD. B11 AND TRAY 2205 AT COORD. C11 AS NOTED.
- 7. REVISED TRAYS FOR 10#4 AT COORD. B11 AND TRAY 2205 AT COORD. C11 AS NOTED.
- 8. REVISED TRAYS FOR 10#4 AT COORD. B11 AND TRAY 2205 AT COORD. C11 AS NOTED.
- 9. REVISED TRAYS FOR 10#4 AT COORD. B11 AND TRAY 2205 AT COORD. C11 AS NOTED.
- 10. REVISED TRAYS FOR 10#4 AT COORD. B11 AND TRAY 2205 AT COORD. C11 AS NOTED.
- 11. REVISED TRAYS FOR 10#4 AT COORD. B11 AND TRAY 2205 AT COORD. C11 AS NOTED.
- 12. REVISED TRAYS FOR 10#4 AT COORD. B11 AND TRAY 2205 AT COORD. C11 AS NOTED.
- 13. REVISED TRAYS FOR 10#4 AT COORD. B11 AND TRAY 2205 AT COORD. C11 AS NOTED.
- 14. REVISED TRAYS FOR 10#4 AT COORD. B11 AND TRAY 2205 AT COORD. C11 AS NOTED.
- 15. REVISED TRAYS FOR 10#4 AT COORD. B11 AND TRAY 2205 AT COORD. C11 AS NOTED.
- 16. REVISED TRAYS FOR 10#4 AT COORD. B11 AND TRAY 2205 AT COORD. C11 AS NOTED.
- 17. REVISED TRAYS FOR 10#4 AT COORD. B11 AND TRAY 2205 AT COORD. C11 AS NOTED.
- 18. REVISED TRAYS FOR 10#4 AT COORD. B11 AND TRAY 2205 AT COORD. C11 AS NOTED.
- 19. REVISED TRAYS FOR 10#4 AT COORD. B11 AND TRAY 2205 AT COORD. C11 AS NOTED.
- 20. REVISED TRAYS FOR 10#4 AT COORD. B11 AND TRAY 2205 AT COORD. C11 AS NOTED.

34"

34"

82.2080210

RIDS

