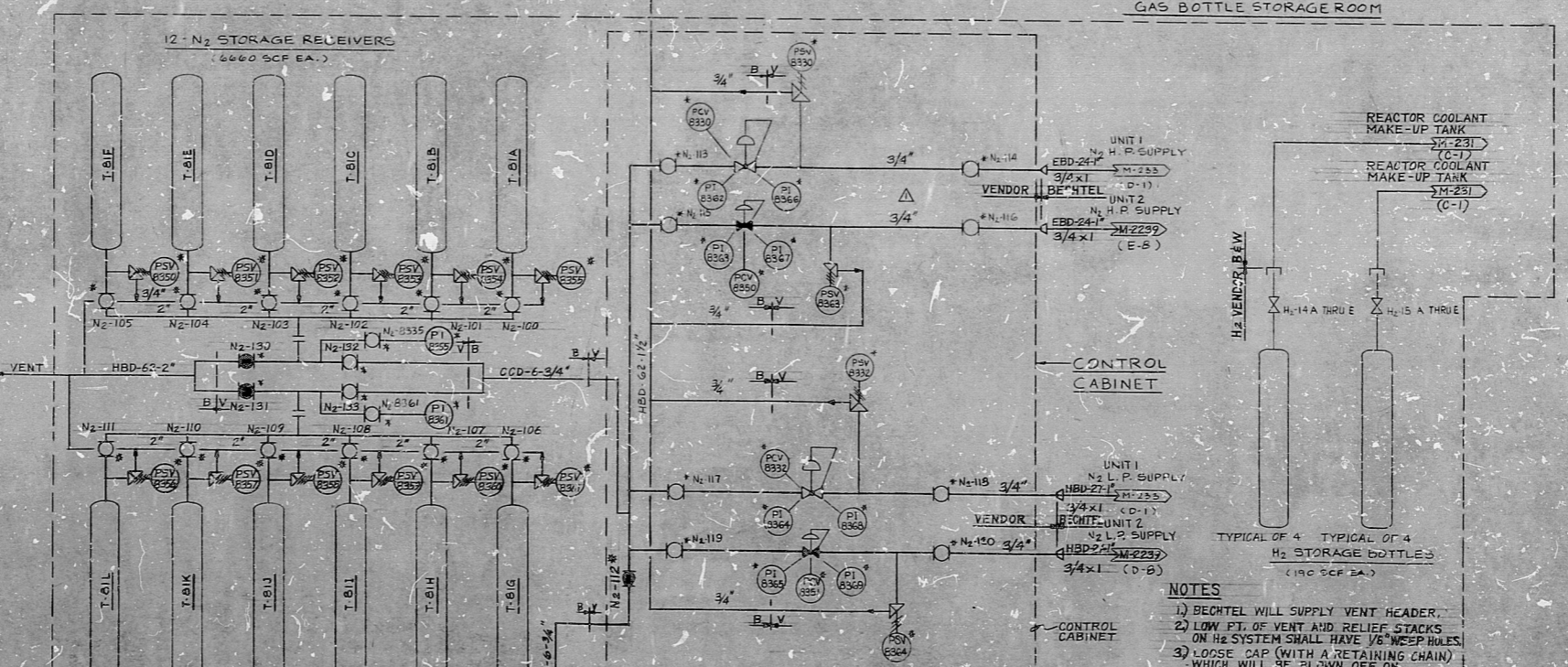
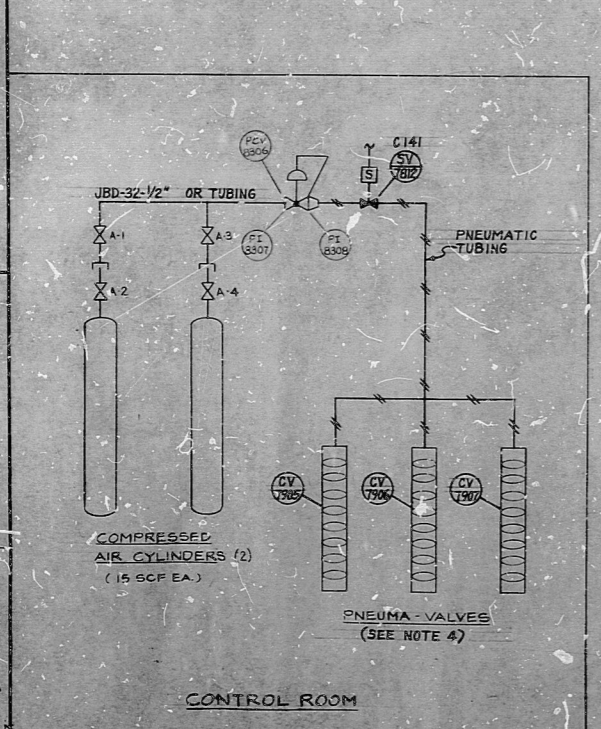
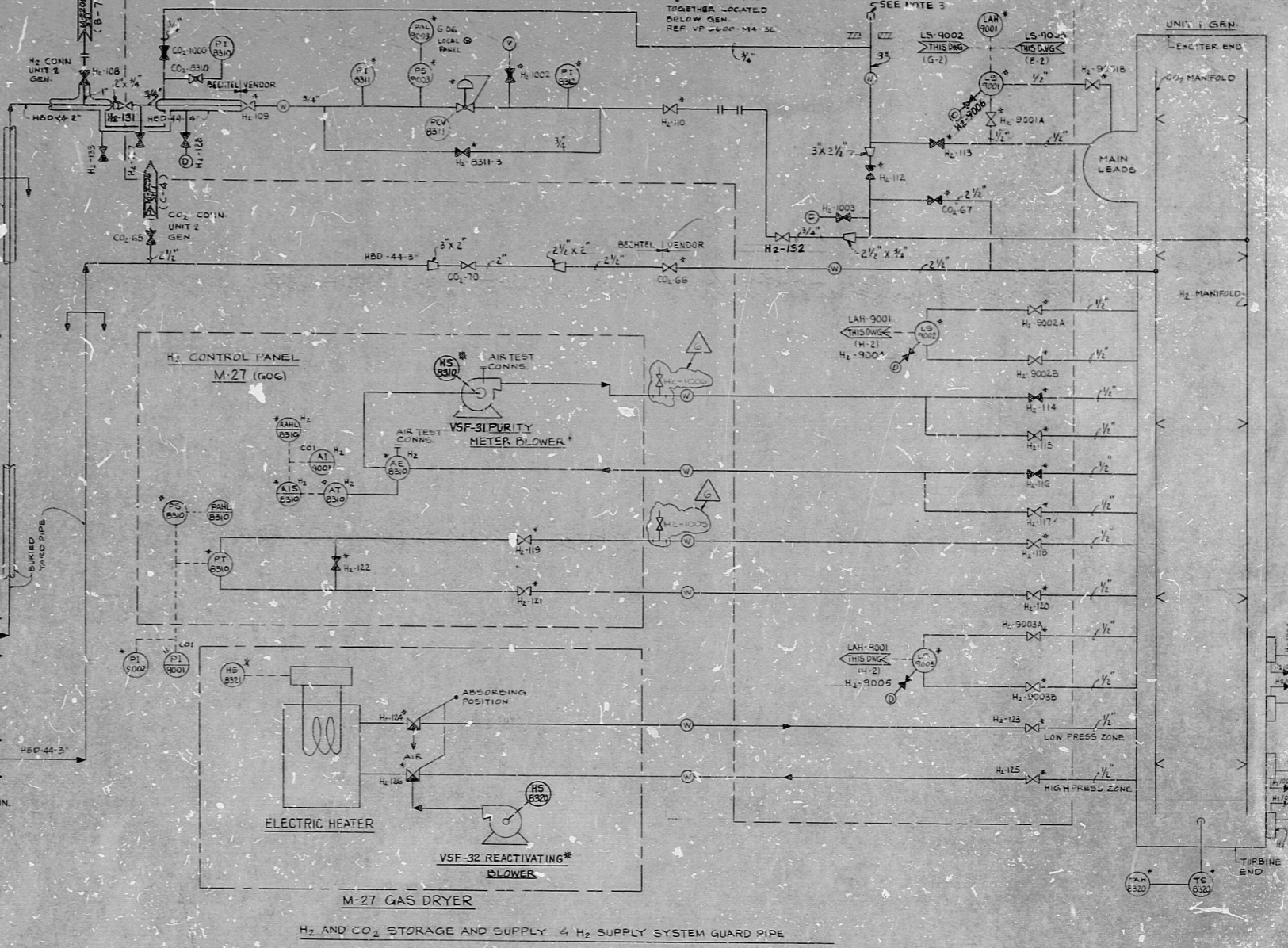
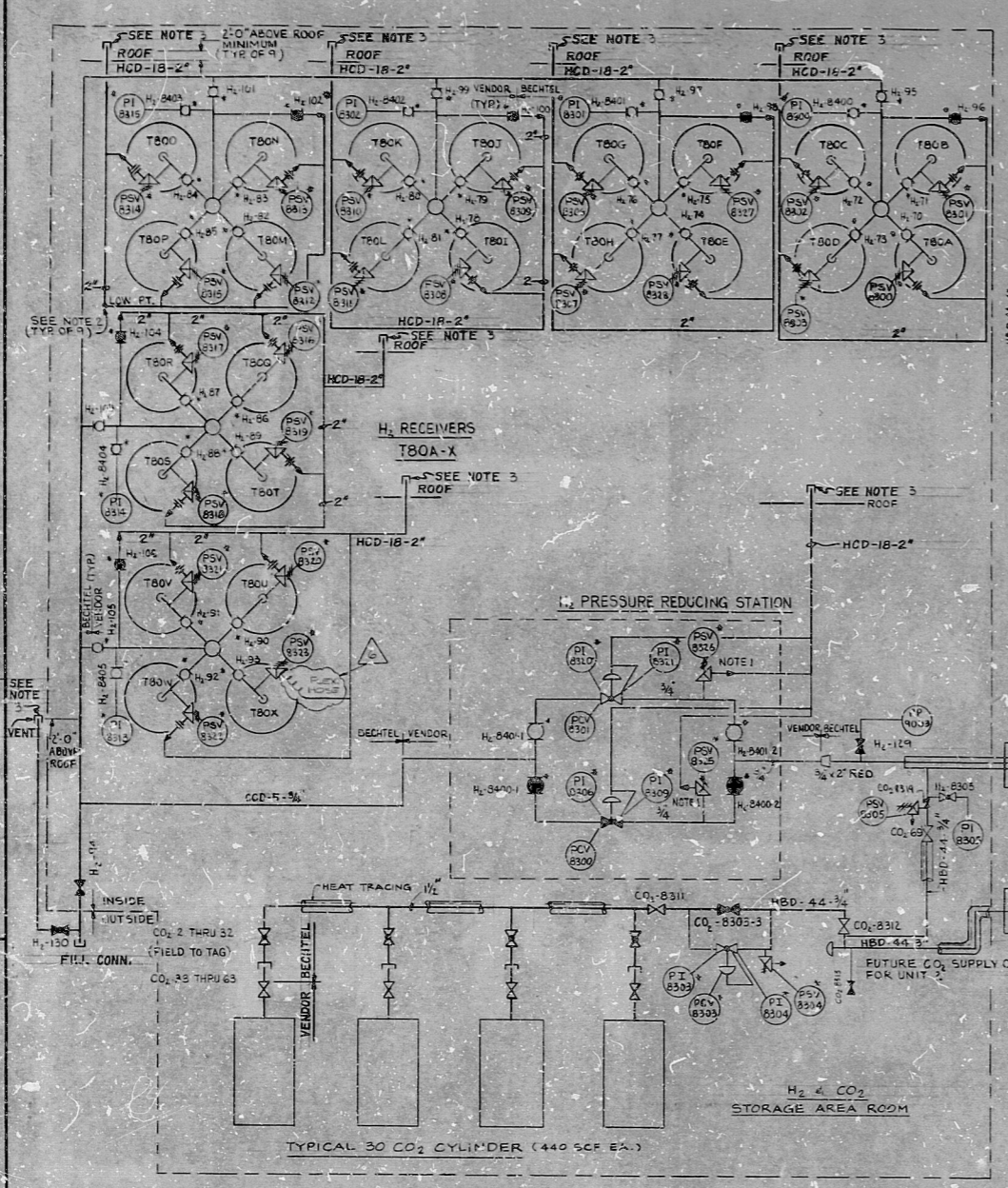


SCALE 1/8" = 1'-0" M-225

SIZE E



- NOTES
- 1) BECTHEL WILL SUPPLY VENT HEADER.
  - 2) LOW PT. OF VENT AND RELIEF STACKS ON H<sub>2</sub> SYSTEM SHALL HAVE VENT HOLES WHICH WILL BE BLOWN OFF ON PRESSURE RELEASE.
  - 3) LOOSE CAP (WITH A RETAINING CHAIN) WHICH WILL BE BLOWN OFF ON PRESSURE RELEASE.
  - 4) DW-7005 OR IT APPEAR ON DRAWINGS H-105 AND H-263.

8211080132

DATE	BY	CHKD	APP'D
10/1/68	W. L. LUM	B. L. LUM	B. L. LUM

BECTHEL CORPORATION  
 SAN FRANCISCO  
 ARKANSAS POWER & LIGHT COMPANY  
 ARKANSAS NUCLEAR CORE  
 NRC  
 PIPING & INSTRUMENT DIAGRAM  
 GAS SUPPLY SYSTEMS  
 JOB NO. 6600-1 M-225 SHEET NO. 7

RIDS

8211080132

