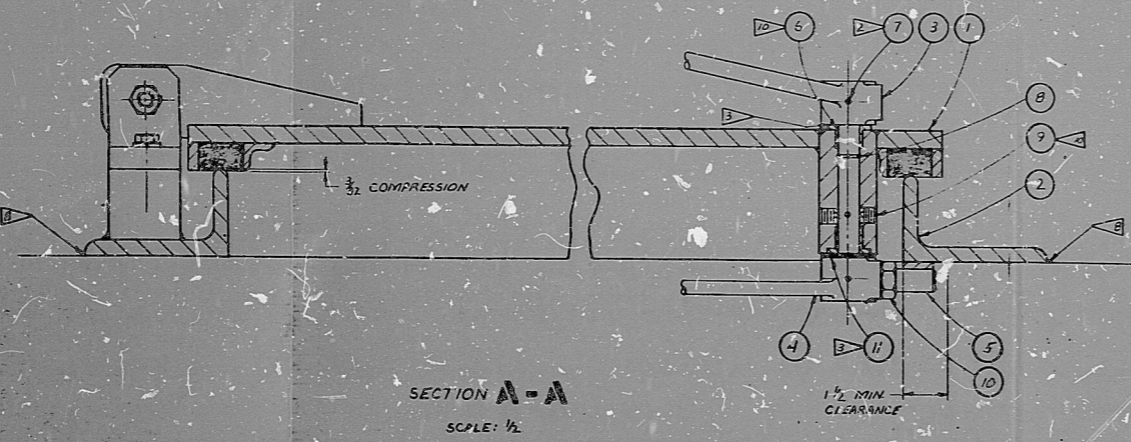


- NOTES
- IMPRESSION STAMP: DATE, ASSY NO. & SERIAL NO.
  - AT ASSY POSITION HANDLES AS SHOWN. DRILL THRU HANDLE & SCKET FOR DET. 7
  - TO INCREASE COMPRESSION, REMOVE APPROPRIATE NO. OF SHIMS & PLACE THEM BETWEEN DET. 3 & 10.
  - AFTER FINAL FINISH, STENCIL AS SHOWN.
  - RADIUSSED EDGES OF FRAME TO BE FLAT WITHIN .040 AFTER WELDING.
  - DOOR WELDMENT TO BE FLAT WITHIN  $\frac{1}{16}$ " AFTER WELDING.
  - 7 FRAME ANCHORS & HOLES BUY CUSTOMER.
  - AT INSTALLATION CAULK FRAME TO WALL TO INSURE WATER TIGHT CONDITION.
  - APPROXIMATE WEIGHT OF DOOR & FRAME ASSY: 1250 LBS.
  - AT ASSY POSITION HANDLES IN OPEN CONDITION, DRILL  $\frac{1}{4}$ " DIA X  $\frac{1}{8}$ " DP FOR DETENT OF DET. 3 INTO DET. 6.
  - AT ASSY POSITION DET. 2 D SO THAT HANDLES FALL AS SHOWN WHEN IN CLOSED CONDITION.

REV	DATE	DESCRIPTION	BY	CHKD
0-001		RELEASED FOR PRODUCTION		
0-002		SH. 7: ADDED COMPRESSION & CLEARANCE DIMENSIONS. SHIT 2: DET. 1 WAS 1.0. DET. 3 WAS 2.00. B34 WAS J.L. DET. 13 BORE WAS 1.000. ADD. DIM. TO DET. 19. ADDED DPT. TO IC. WEL. SHIT 3: ADDED VALUES TO FRAME DETAIL. DET. 28 WAS 1.00 L.S.		

PR 4443-1 LEFT HAND REVERSE BEVEL  
4'-0" X 8'-0" OPENING DOOR ASSY

**POOR ORIGINAL**



REV	DATE	DESCRIPTION	BY	CHKD
1	15	PRS 804		
2	14	DRIVER-NALON "D" 3/16 LG		
3	13	PRS 851		
4	12	PRS 803		
5	11	1 BODY 1.10 X 1/2 TKN S1STEEL		
6	10	1 1/2 INCH		
7	9	REIDS K6-N		
8	8	VICTOR 722H		
9	7	1/2 DIA X 1 1/2 LG		
10	6	SEE SHEET 2		
11	5	SEE SHEET 3		
12	4	SEE SHEET 3		
13	3	SEE SHEET 3		
14	2	SEE SHEET 3		
15	1	SEE SHEET 2		

PR 4443-1

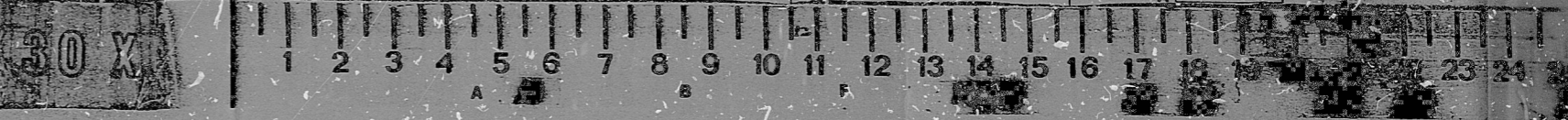
522558-A

THE PRISAY CORP.

4'-0" X 8'-0" OPENING L.H. REVERSE BEVEL DOOR & FRAME ASSEMBLY

PR 4443

PRC  
PERTURE  
CARD



8211030146



RIDS

8211030146

