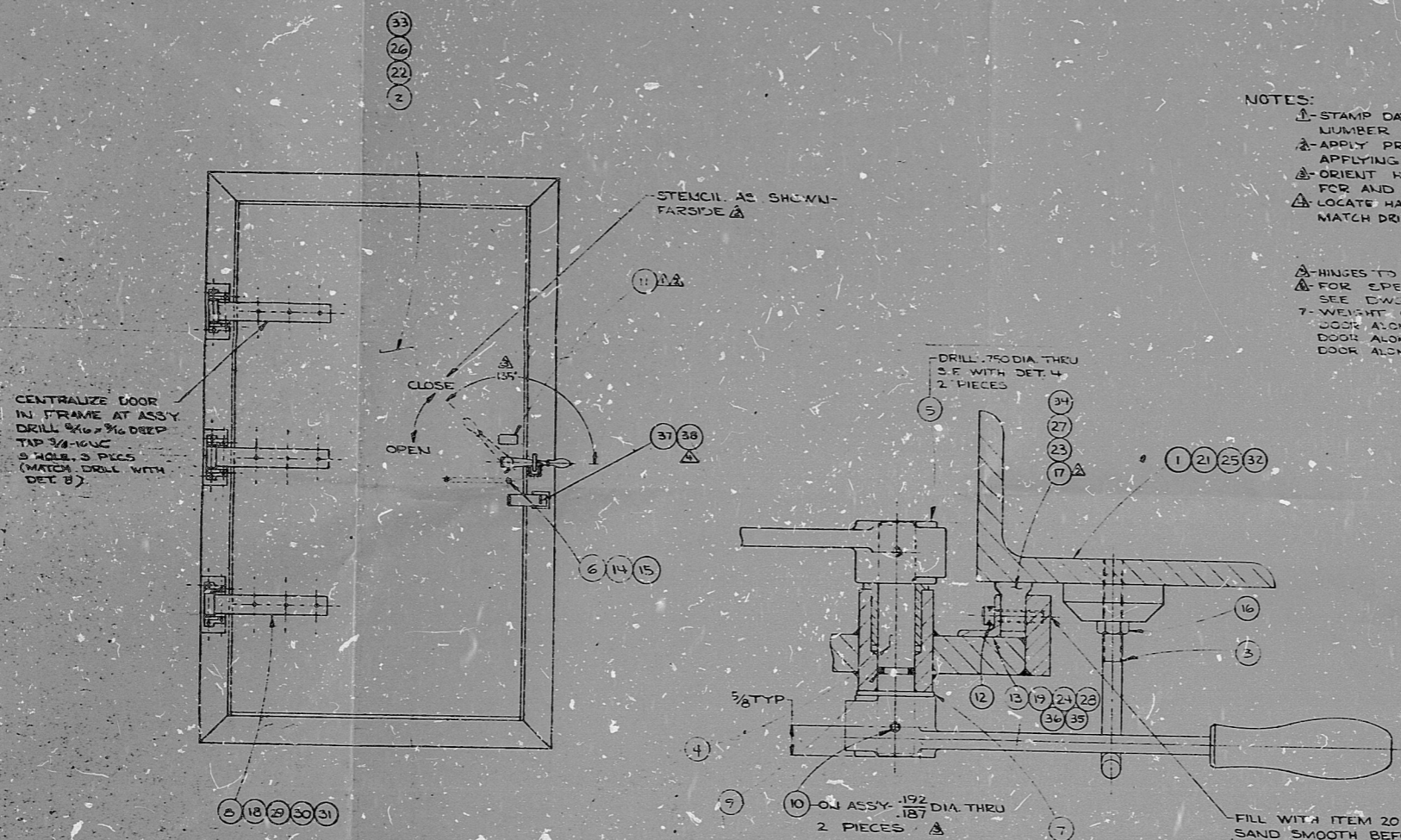


POOR ORIGINAL

REV	NO	DESCRIPTION
1	1	SEE ECR #1188
2	1	ALL REL. FOR PROD. ONLY 3, 4, 5, 6, 7, 8, 9, 10, 11, 12, 13, 14, 15, 16, 17, 18, 19, 20, 21, 22, 23, 24, 25, 26, 27, 28, 29, 30, 31, 32, 33, 34, 35, 36, 37, 38, 39, 40, 41, 42, 43, 44, 45, 46, 47, 48, 49, 50, 51, 52, 53, 54, 55, 56, 57, 58, 59, 60, 61, 62, 63, 64, 65, 66, 67, 68, 69, 70, 71, 72, 73, 74, 75, 76, 77, 78, 79, 80, 81, 82, 83, 84, 85, 86, 87, 88, 89, 90, 91, 92, 93, 94, 95, 96, 97, 98, 99, 100
3	1	ADD 1/4" DIA. HOLE
4	1	ADDED 1/4" DIA. HOLE

NOTES:
 1- STAMP DATE, SERIAL NUMBER AND ASSEMBLY NUMBER PP2905 ON NAMEPLATE
 2- APPLY PRIME COAT OF PAINT PRIOR TO STENCILING. APPLYING NAMEPLATE AND INSTALLING SEAL.
 3- ORIENT HANDLES AS SHOWN PRIOR TO DRILLING FOR AND INSTALLING ROLL PINS.
 4- LOCATE HASP AS SHOWN, DRILL #29 1/2 DEEP, TAP 8-32NC, 8 HOLES MATCH DRILL WITH DET 37 (-4 ASSY ONLY)

5- HINGES TO BE PROVIDED WITH HARDENED CAP SCREW PIN.
 6- FOR SPECIAL FINISHING INFORMATION ON -3 ASSY SEE DWG. NO. PP-2261.
 7- WEIGHT OF DOOR & FRAME COMBINED: PR2905-1 ASSY=1077#
 DOOR ALONE=712# FRAME ALONE=365# PR2905-2 ASSY=1327#
 DOOR ALONE=951# FRAME ALONE=396# PR2905-3 ASSY=950#
 DOOR ALONE=619# FRAME ALONE=335#



PR2905-1 2&3 ASSY LEFT HAND REVERSE BEVEL SHOWN
 PR2905-4 ASSY RIGHT HAND REVERSE BEVEL OPPOSITE

SECTION THRU LATCH ASSEMBLY
 FULL SIZE

QTY	NO	DESCRIPTION	UNIT
1	38	8-32X1/2 LG	FLAT HD WASH SCREW
1	37	STANLEY 918	SAFETY HASP
2	36	SEE SHEET 3	SIDE RETAINING ANGLE
2	35	8	END RETAINING ANGLE
1	34	2	GASKET
1	33	2	DOOR WELDMENT
1	32	SEE SHEET 2	FRAME WELDMENT
2	31	3/16" D. SPLT.	LOCK WASHER
2	30	3/16" D.	FLAT WASHER
2	29	3/8-16NC	HEX NUT
2	28	SEE SHEET 3	SIDE RETAINING ANGLE
1	27	2	GASKET
1	25	2	DOOR WELDMENT
2	24	3	FRAME WELDMENT
1	23	2	END RETAINING ANGLE
1	22	2	GASKET
1	21	2	DOOR WELDMENT
2	20	SEE SHEET 2	FRAME WELDMENT
2	19	DEVCON	FILLER
2	18	SEE SHEET 3	END RETAINING ANGLE
2	17	3/8-16NC X 1/2 LG	SOC HD CAP SCRE
1	16	SEE SHEET 2	GASKET
2	15	3/8-16NC	LOCK NUT
2	14	VICTOR 72011	O-RING
2	13	1/4-18NC X 1/2 LG	SOC HD CAP SCRE
2	12	SEE SHEET 3	SIDE RETAINING ANGLE
1	11	1/4-20NC X 1" LG	SOC HD CAP SCRE
1	10	PR2 555	DATA PLATE
2	9	1/4 DIA X 1 3/4 LG	ROLL PIN

QTY	NO	DESCRIPTION	UNIT
1	7	VICTOR 72016	O-RING
3	3	KASON 100664	HINGE
1	1	BOWEN TB-1225	THROUGH BRASSING
1	1	KASON 100678	HANDLE
2	2	RED HD SH 10	HANDLE
1	1	SEE SHEET 3	LATCH SHIRT
1	1	SEE SHEET 3	LATCH ROD
1	1	SEE SHEET 2	DOOR WELDMENT
1	1	SEE SHEET 2	FRAME WELDMENT

6601XS



THEY WHO...
 WATER TIGHT DOOR...
 PR2905

PRC
 APERTURE
 CARD



8211030126

RIPS

8211030126

