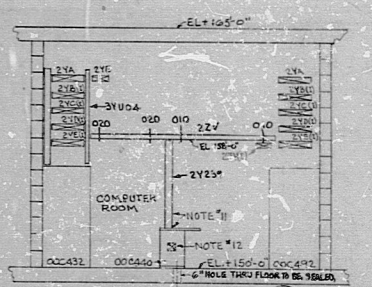


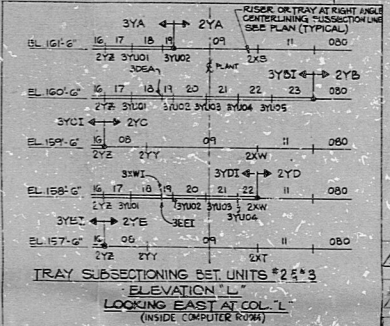
KEY PLAN

- NOTES
1. FOR CONTROL ROOM & CAB. E. SPREAD ROOM EQUIP LOCATIONS & NUMBERS SEE DWG'S E-1012, E-1021 & E-1047
  2. VERTICAL TRAY RISERS SHOWN AT CROSSING POINTS OF HORIZONTAL TRAYS ARE PRIMARILY FOR TRANSFER OF CABLES FROM ONE HORIZONTAL TRAY TO ANOTHER.
  3. R- INDICATES TRAY RISER TO CONTROL ROOM PANEL PENETRATIONS AS SHOWN ON 598
  4. R- INDICATES TRAY RISER TO PANEL IN CABLE SPREADING ROOM (TOP ENTRY) AS SHOWN ON 598
  5. FOR CONDUIT LAYOUT IN CABLE SPREAD ROOM (REGULAR & BUS) (SUPERVISOR CONC) SEE DWG # E-1054
  6. FOR CONDUIT LAYOUTS OF REACTOR PROT SYSTEM SEE DWG # E-1105 (UNIT #2) & E-1120 (UNIT #3)
  7. TYPICAL TRAY DIMENSIONS FOR TRAYS UNDER CONTROL ROOM PANELS & CONSOLES (UNIT #2 & UNIT #3)
  8. WHERE A TRAY RISER OF ONE REACTOR TRAY SYSTEM IS LESS THAN 3FT FROM ANOTHER REACTOR TRAY SYSTEM FIRE BARRIERS MUST BE PROVIDED PER SHT 22 AND B1315 SHTS 14 AND 116.
  9. ALL SLEEVES ON NORTH EAST WALLS TO BE SAME SIZE AS SHOWN OPPOSITE HAND ON UNIT 2.
  10. TRAYS SHD101-31 ARE FOR CONTROL CABLES

SECTION S



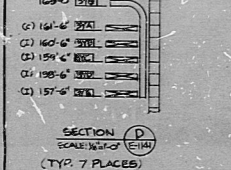
- NOTES (CONT)
11. 6" x 6" x 1/2" ST. STEEL CABLE CHUTE (BY FIELD) CUT OPENING IN TOP OF 00C440 TO PASS COMPUTER CABLES. INSULATE CHUTE PER 00C440 BUT GROUND TO TRAY SYSTEM ALL ELEMENTS OF COMPUTER INSTALLATION TO BE INSULATED FROM STA. GROUND. GROUND ONLY THRU COMPUTER GROUND NETWORK (EXISTING)
  12. CUT 6" x 6" HOLES THRU ADJACENT SIDE PANELS OF CONSOLES TO PASS COMPUTER CABLES THRU (LOC BY FIELD)



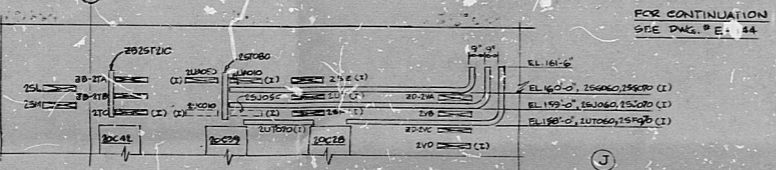
TRAY SUBSECTIONING DET. UNITS #2 & #3 ELEVATIONALLY LOOKING EAST AT COL 'L' (INSIDE COMPUTER ROOM)

PRO APERTURE CARD

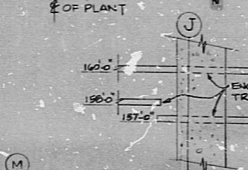
POOR ORIGINAL



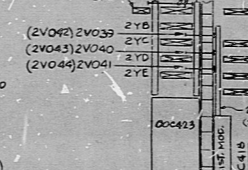
SECTION D (TYP. 7 PLACES) SCALE: 1/4" = 1'-0"



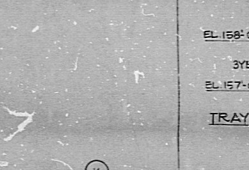
SECTION E SCALE: 1/4" = 1'-0"



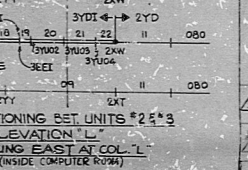
SECTION F (TYP. 4 PLACES) SCALE: 1/4" = 1'-0"



SECTION G SCALE: 1/4" = 1'-0"



SECTION H SCALE: 1/4" = 1'-0"



SECTION I SCALE: 1/4" = 1'-0"

**BECHTEL**  
SAN FRANCISCO

PEACH BOTTOM ATOMIC POWER STATION UNITS No. 2 & 3  
MILLARIA ELECTRIC COMPANY  
ELECTRICAL INDEX E-2015

**TRAY LAYOUT-TURBINE BLDG AREA 3 EL150'-0"**  
CABLE SPREADING Rm

NO. 6280	DATE E-1141	REV. 3
ELECTRICAL		2810210348

049908-5133 ISSUED AS RESULT FOR WDS 2-20-64

RIDS

8210270348

