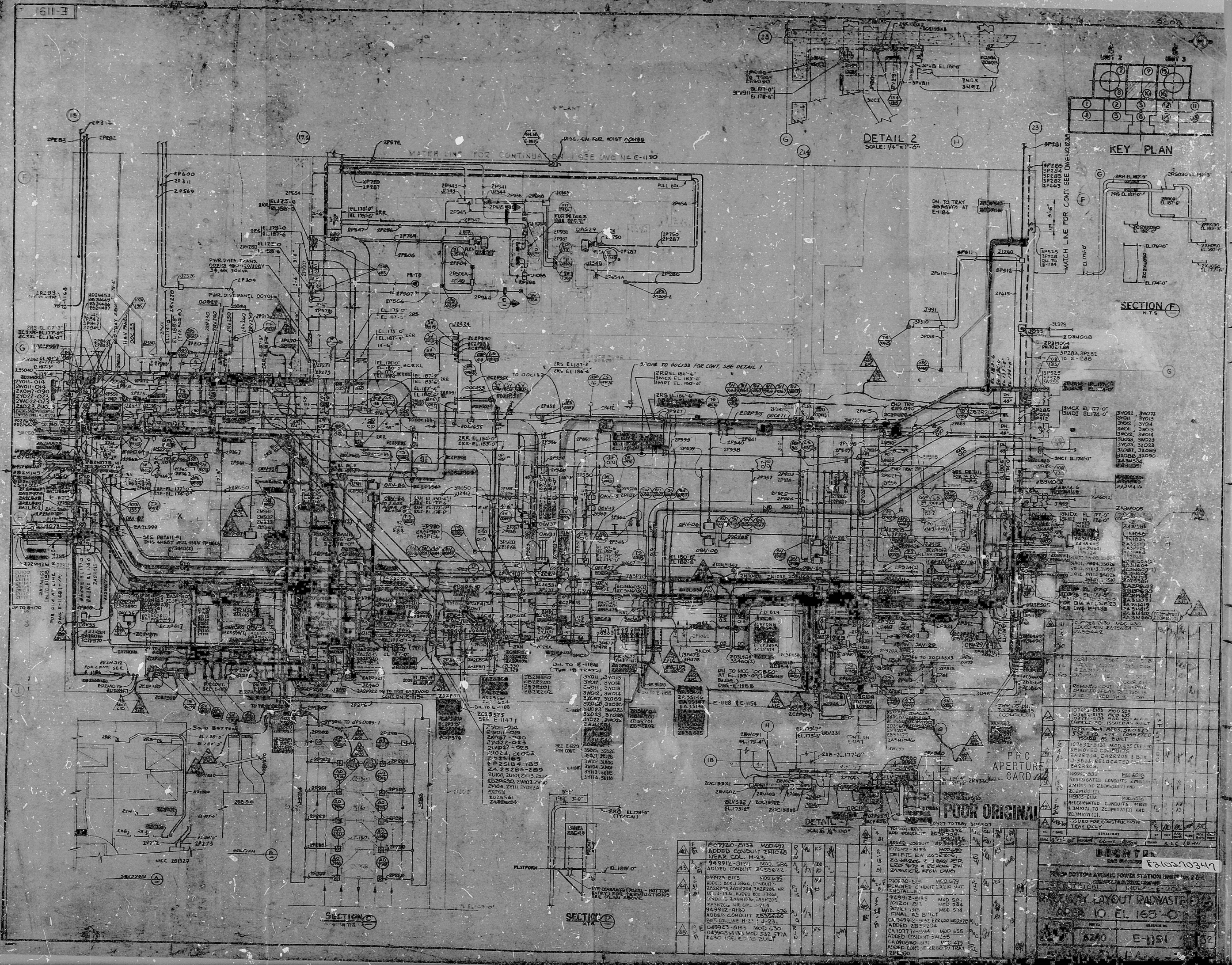
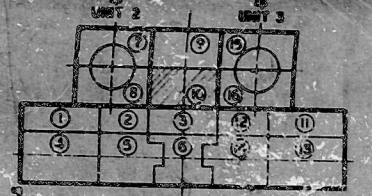


34  
22  
17  
11  
5.8  
8.5  
11  
17  
22

34  
22  
17  
11  
5.8  
8.5  
11  
17  
22



DETAIL 2  
SCALE: 1/4" = 1'-0"



KEY PLAN

SECTION F  
N.T.S.

PRO APERTURE CARD

PRO ORIGINAL

NO.	DESCRIPTION	DATE	BY	CHKD.
1	ADDED CONDUIT TO MCC 20D29 NEAR COL. H-23	10/22/54	J. H. B.	J. H. B.
2	ADDED CONDUIT TO MCC 20D29 NEAR COL. H-23	10/22/54	J. H. B.	J. H. B.
3	ADDED CONDUIT TO MCC 20D29 NEAR COL. H-23	10/22/54	J. H. B.	J. H. B.
4	ADDED CONDUIT TO MCC 20D29 NEAR COL. H-23	10/22/54	J. H. B.	J. H. B.
5	ADDED CONDUIT TO MCC 20D29 NEAR COL. H-23	10/22/54	J. H. B.	J. H. B.
6	ADDED CONDUIT TO MCC 20D29 NEAR COL. H-23	10/22/54	J. H. B.	J. H. B.
7	ADDED CONDUIT TO MCC 20D29 NEAR COL. H-23	10/22/54	J. H. B.	J. H. B.
8	ADDED CONDUIT TO MCC 20D29 NEAR COL. H-23	10/22/54	J. H. B.	J. H. B.
9	ADDED CONDUIT TO MCC 20D29 NEAR COL. H-23	10/22/54	J. H. B.	J. H. B.
10	ADDED CONDUIT TO MCC 20D29 NEAR COL. H-23	10/22/54	J. H. B.	J. H. B.
11	ADDED CONDUIT TO MCC 20D29 NEAR COL. H-23	10/22/54	J. H. B.	J. H. B.
12	ADDED CONDUIT TO MCC 20D29 NEAR COL. H-23	10/22/54	J. H. B.	J. H. B.

ISSUED FOR CONSTRUCTION  
TRAY ONLY

10 EL 165'-0"

5200 E-1191 32



RIDS

8210270347

