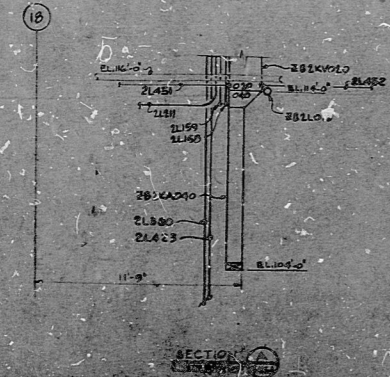


MATCH LINE - FOR CONTINUATION SEE DWG. E-1103

MATCH LINE - FOR CONTINUATION SEE DWG. E-1105

MATCH LINE - FOR CONTINUATION SEE DWG. E-1102



**NOTES**  
 FIELD TO PROVIDE A 3/4" CONDUIT AND CUT TO WIDTH BETWEEN RACEWAYS. JOINS & JOINS AND EACH TEMPERATURE ELEMENT ON 2" SPACING & 2" FROM SIDE OF RACEWAY FOR INTERCONNECTION.

**REFERENCE DRAWINGS**  
 E-102 RACEWAY LAYOUT - REACTOR BLDG. UNIT 2 AREA 9, TL 9101  
 E-103 RACEWAY LAYOUT - REACTOR BLDG. UNIT 2 AREA 7, HL 16101  
 E-105 RACEWAY LAYOUT - REACTOR BLDG. UNIT 7, PARTIAL PLANS, SECTIONS & DET.  
 E-108 RACEWAY LAYOUT - RADWASTE BLDG. AREA 9, EL 9101  
 E-115 CONDUIT & CABLE TRAYS - SYMBOLS, NOTES & DETAILS.

NO.	DESCRIPTION	DATE	BY	CHKD.
12	APERTURE CARD			
13	APERTURE CARD			
14	APERTURE CARD			
15	APERTURE CARD			
16	APERTURE CARD			
17	APERTURE CARD			
18	APERTURE CARD			
19	APERTURE CARD			
20	APERTURE CARD			
21	APERTURE CARD			
22	APERTURE CARD			
23	APERTURE CARD			
24	APERTURE CARD			
25	APERTURE CARD			
26	APERTURE CARD			
27	APERTURE CARD			
28	APERTURE CARD			
29	APERTURE CARD			
30	APERTURE CARD			
31	APERTURE CARD			

NO.	DESCRIPTION	DATE	BY	CHKD.
1	APERTURE CARD			
2	APERTURE CARD			
3	APERTURE CARD			
4	APERTURE CARD			
5	APERTURE CARD			
6	APERTURE CARD			
7	APERTURE CARD			
8	APERTURE CARD			
9	APERTURE CARD			
10	APERTURE CARD			
11	APERTURE CARD			
12	APERTURE CARD			
13	APERTURE CARD			
14	APERTURE CARD			
15	APERTURE CARD			
16	APERTURE CARD			
17	APERTURE CARD			
18	APERTURE CARD			
19	APERTURE CARD			
20	APERTURE CARD			
21	APERTURE CARD			
22	APERTURE CARD			
23	APERTURE CARD			
24	APERTURE CARD			
25	APERTURE CARD			
26	APERTURE CARD			
27	APERTURE CARD			
28	APERTURE CARD			
29	APERTURE CARD			
30	APERTURE CARD			
31	APERTURE CARD			

8810270293

RIDS

8210270293

