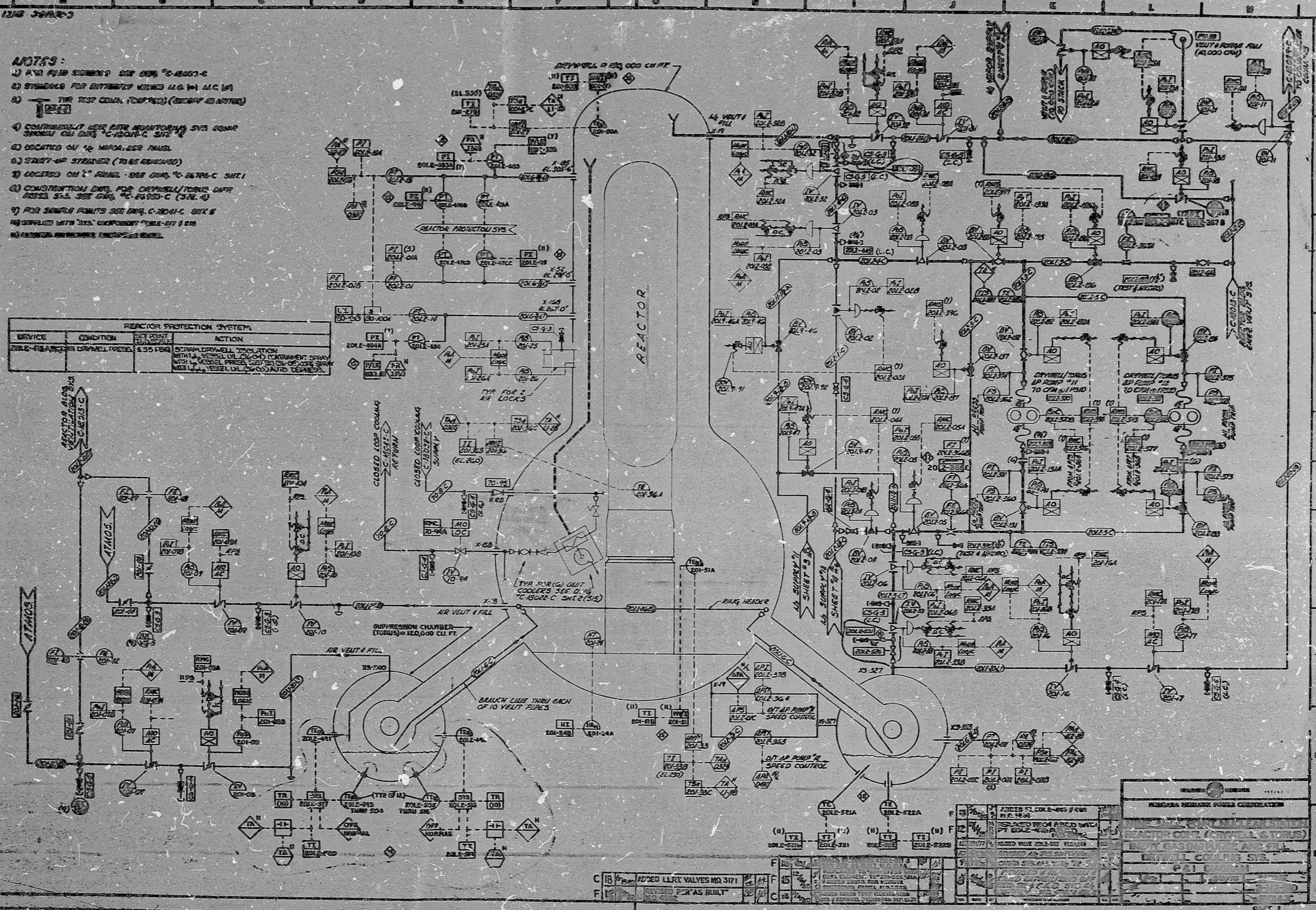


- NOTES:**
- 1) AND P&ID SYMBOLS SEE SHEET C-45003-C
 - 2) SYMBOLS FOR DIFFERENT MODELS AS SHOWN IN (1)
 - 3) THE TEST COIL, FOR P&ID (SEE SHEET C-45003-C)
 - 4) CONTINUOUSLY MONITORING SYSTEMS (MMS) MONITORING ON ONE C-45003-C SHEET
 - 5) LOCATED ON 1/2" W/400-1000 PAUL
 - 6) START-UP STRAINER (TO BE REMOVED)
 - 7) LOCATED ON 2" ANNEAL - ONE ONE C-45003-C SHEET
 - 8) CONSTRUCTION AND FOR DEWELL/TORUS CAPS (SEE SHEET C-45003-C (3.2.4))
 - 9) FOR SAMPLE POINTS SEE SHEET C-45003-C, SHEET 6
 - 10) SUPPLIED WITH 3/4" COMPONENT P&ID-011 0 010
 - 11) CHECKED BY: [Signature]

REACTOR PROTECTION SYSTEM			
SERVICE	CONDITION	SET POINT	ACTION
SOLE-478A	DRYWELL PRESSURE	4.35 PSIG	ISOLATE DRWELL ISOLATION VALVE, VESSEL TO SECOND CONFINEMENT SHOWN WITH A VESSEL PRESSURE CONTROL SYSTEM WITH A VESSEL PRESSURE CONTROL SYSTEM WITH A VESSEL PRESSURE CONTROL SYSTEM



NO.	DESCRIPTION	DATE	BY	CHKD.
1	ISSUED FOR CONSTRUCTION			
2	ISSUED FOR CONSTRUCTION			
3	ISSUED FOR CONSTRUCTION			
4	ISSUED FOR CONSTRUCTION			
5	ISSUED FOR CONSTRUCTION			
6	ISSUED FOR CONSTRUCTION			
7	ISSUED FOR CONSTRUCTION			
8	ISSUED FOR CONSTRUCTION			
9	ISSUED FOR CONSTRUCTION			
10	ISSUED FOR CONSTRUCTION			
11	ISSUED FOR CONSTRUCTION			
12	ISSUED FOR CONSTRUCTION			
13	ISSUED FOR CONSTRUCTION			
14	ISSUED FOR CONSTRUCTION			
15	ISSUED FOR CONSTRUCTION			
16	ISSUED FOR CONSTRUCTION			
17	ISSUED FOR CONSTRUCTION			
18	ISSUED FOR CONSTRUCTION			
19	ISSUED FOR CONSTRUCTION			
20	ISSUED FOR CONSTRUCTION			
21	ISSUED FOR CONSTRUCTION			
22	ISSUED FOR CONSTRUCTION			
23	ISSUED FOR CONSTRUCTION			
24	ISSUED FOR CONSTRUCTION			
25	ISSUED FOR CONSTRUCTION			
26	ISSUED FOR CONSTRUCTION			
27	ISSUED FOR CONSTRUCTION			
28	ISSUED FOR CONSTRUCTION			
29	ISSUED FOR CONSTRUCTION			
30	ISSUED FOR CONSTRUCTION			
31	ISSUED FOR CONSTRUCTION			
32	ISSUED FOR CONSTRUCTION			
33	ISSUED FOR CONSTRUCTION			
34	ISSUED FOR CONSTRUCTION			
35	ISSUED FOR CONSTRUCTION			
36	ISSUED FOR CONSTRUCTION			
37	ISSUED FOR CONSTRUCTION			
38	ISSUED FOR CONSTRUCTION			
39	ISSUED FOR CONSTRUCTION			
40	ISSUED FOR CONSTRUCTION			
41	ISSUED FOR CONSTRUCTION			
42	ISSUED FOR CONSTRUCTION			
43	ISSUED FOR CONSTRUCTION			
44	ISSUED FOR CONSTRUCTION			
45	ISSUED FOR CONSTRUCTION			
46	ISSUED FOR CONSTRUCTION			
47	ISSUED FOR CONSTRUCTION			
48	ISSUED FOR CONSTRUCTION			
49	ISSUED FOR CONSTRUCTION			
50	ISSUED FOR CONSTRUCTION			
51	ISSUED FOR CONSTRUCTION			
52	ISSUED FOR CONSTRUCTION			
53	ISSUED FOR CONSTRUCTION			
54	ISSUED FOR CONSTRUCTION			
55	ISSUED FOR CONSTRUCTION			
56	ISSUED FOR CONSTRUCTION			
57	ISSUED FOR CONSTRUCTION			
58	ISSUED FOR CONSTRUCTION			
59	ISSUED FOR CONSTRUCTION			
60	ISSUED FOR CONSTRUCTION			
61	ISSUED FOR CONSTRUCTION			
62	ISSUED FOR CONSTRUCTION			
63	ISSUED FOR CONSTRUCTION			
64	ISSUED FOR CONSTRUCTION			
65	ISSUED FOR CONSTRUCTION			
66	ISSUED FOR CONSTRUCTION			
67	ISSUED FOR CONSTRUCTION			
68	ISSUED FOR CONSTRUCTION			
69	ISSUED FOR CONSTRUCTION			
70	ISSUED FOR CONSTRUCTION			
71	ISSUED FOR CONSTRUCTION			
72	ISSUED FOR CONSTRUCTION			
73	ISSUED FOR CONSTRUCTION			
74	ISSUED FOR CONSTRUCTION			
75	ISSUED FOR CONSTRUCTION			
76	ISSUED FOR CONSTRUCTION			
77	ISSUED FOR CONSTRUCTION			
78	ISSUED FOR CONSTRUCTION			
79	ISSUED FOR CONSTRUCTION			
80	ISSUED FOR CONSTRUCTION			
81	ISSUED FOR CONSTRUCTION			
82	ISSUED FOR CONSTRUCTION			
83	ISSUED FOR CONSTRUCTION			
84	ISSUED FOR CONSTRUCTION			
85	ISSUED FOR CONSTRUCTION			
86	ISSUED FOR CONSTRUCTION			
87	ISSUED FOR CONSTRUCTION			
88	ISSUED FOR CONSTRUCTION			
89	ISSUED FOR CONSTRUCTION			
90	ISSUED FOR CONSTRUCTION			
91	ISSUED FOR CONSTRUCTION			
92	ISSUED FOR CONSTRUCTION			
93	ISSUED FOR CONSTRUCTION			
94	ISSUED FOR CONSTRUCTION			
95	ISSUED FOR CONSTRUCTION			
96	ISSUED FOR CONSTRUCTION			
97	ISSUED FOR CONSTRUCTION			
98	ISSUED FOR CONSTRUCTION			
99	ISSUED FOR CONSTRUCTION			
100	ISSUED FOR CONSTRUCTION			

Roll #390
30X
POOR ORIGINAL
P&ID APERTURE CARD
CH 12 & 13

DDAPID
RIDS

82107 0065

