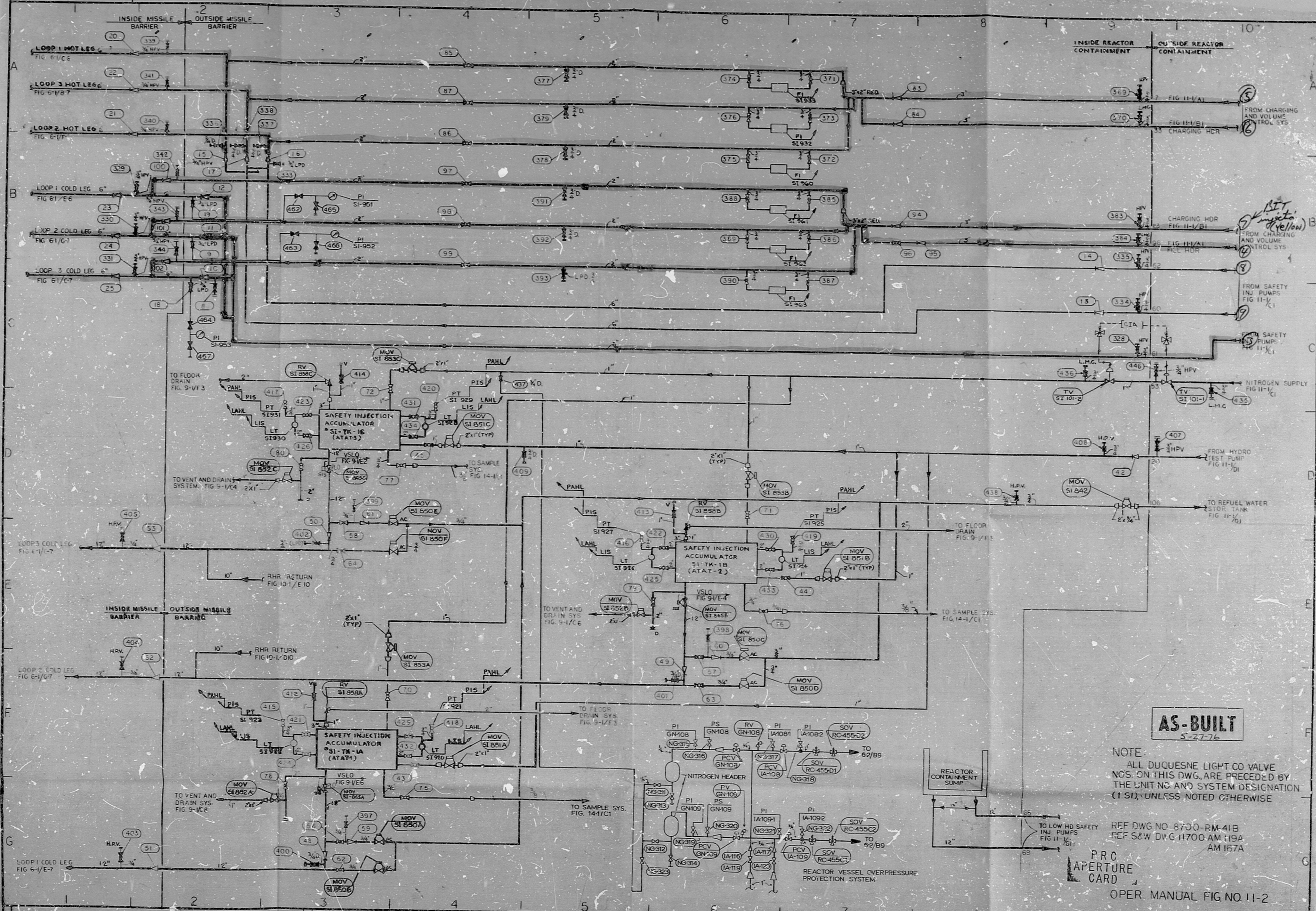


No. 8700-RM-167 B



AS-BUILT
5-27-76

NOTE
 ALL DUQUESNE LIGHT CO VALVE NOS. ON THIS DWG. ARE PRECEDED BY THE UNIT NO AND SYSTEM DESIGNATION (1 SI), UNLESS NOTED OTHERWISE

REF DWG NO. 8700-RM-41B
 REF S&W DWG. 11700-AM-119A
 AM 167A

PRC
 APERTURE
 CARD

OPER. MANUAL FIG. NO. 11-2

5. UPDATED VAL. WALKSHEET Detail - 1/27/76		6. REVISIONS 1. REVISED TO REFERENCE TO FIG. 11-1/1 AND 11-1/2 2. UP DATED WITH 84-1-11 3. UP DATED AS SHOWN S-27-76		DUQUESNE LIGHT COMPANY ENGINEERING & CONSTRUCTION PITTSBURGH, PA.		VALVE OPER. NO. DIAG. SAFETY INJECTION SYSTEM SH-2	
DRAWN BY CHECKED BY APPROVED BY DATE	ARCH. APP. MECH. APP. STRUCT. APP. DATE	BEAVER VALLEY POWER STATION UNIT NO AA No. 8700-RM-167B		S&W DWG. NO. 11700-AM-119A		34	

PIDS

8210270022

