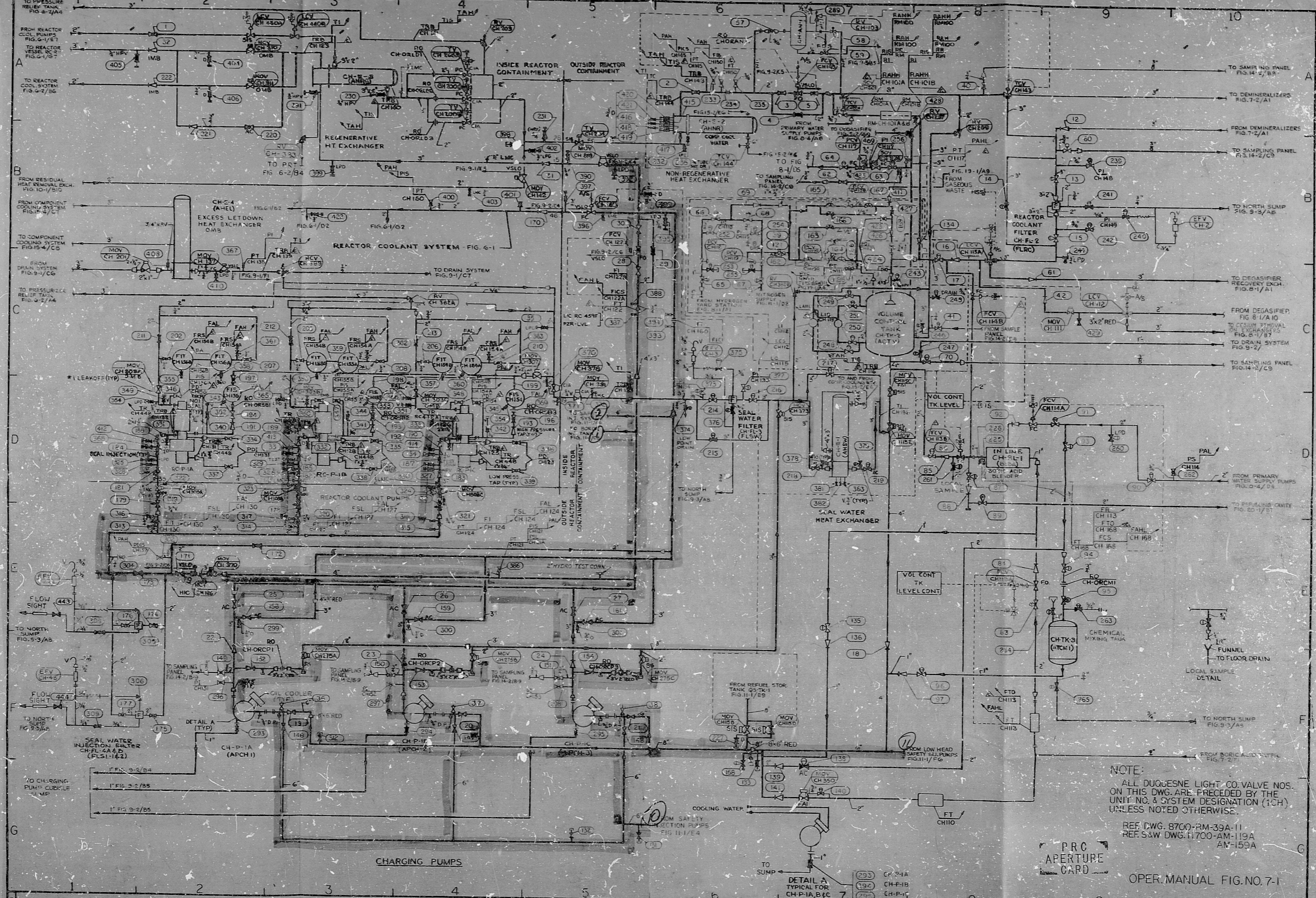


No. 8700-RM-159A



NOTE:
 ALL DUCESNE LIGHT CO. VALVE NOS.
 ON THIS DWG. ARE PRECEDED BY THE
 UNIT NO. & SYSTEM DESIGNATION (1CH)
 UNLESS NOTED OTHERWISE.

REF. DWG. 8700-RM-39A-11
 REF. S&W DWG. 11700-AM-119A
 AM-159A

P.R.C.
 APERTURE
 CARD

OPER. MANUAL FIG. NO. 7-1

7. REVISIONS	8. GENERAL REVISION	9. SCALE	10. DATE	11. APPROVED	12. CHECKED	13. DESIGNED	14. DRAWN	15. INSP.	16. DATE	17. APPROVED	18. CHECKED	19. DESIGNED	20. DRAWN	21. INSP.
1. REVISIONS	2. GENERAL REVISION	3. SCALE	4. DATE	5. APPROVED	6. CHECKED	7. DESIGNED	8. DRAWN	9. INSP.	10. DATE	11. APPROVED	12. CHECKED	13. DESIGNED	14. DRAWN	15. INSP.

DUQUESNE LIGHT COMPANY
 ENGINEERING & CONSTRUCTION - PITTSBURGH, PA.

VALVE OPER. NO. DIAG.
 CHEMICAL & VOLUME CONTROL SYS. 5A
 BEAVER VALLEY POWER STATION - UNIT NO. 1
 D.W. No. 8700
 C.O. No. 348
AA No. 8700-RM-159A
 S&W DWG. NO. 11700-RM-159A-7

46
 22
 11
 11
 9.8
 8.5
 11
 17
 22

46
 22
 11
 11
 9.8
 8.5
 11
 17
 22

DDAMEC
RWS

8210270019

