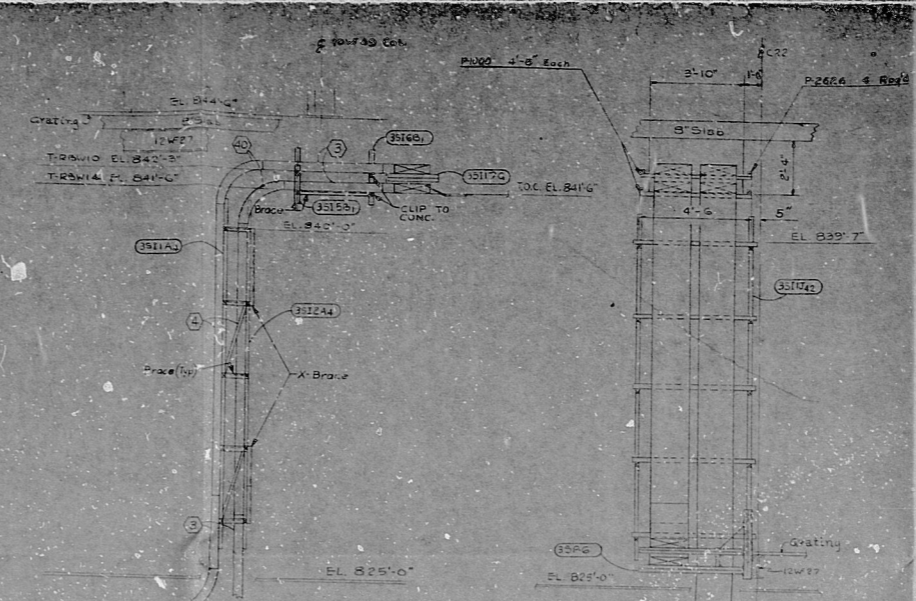


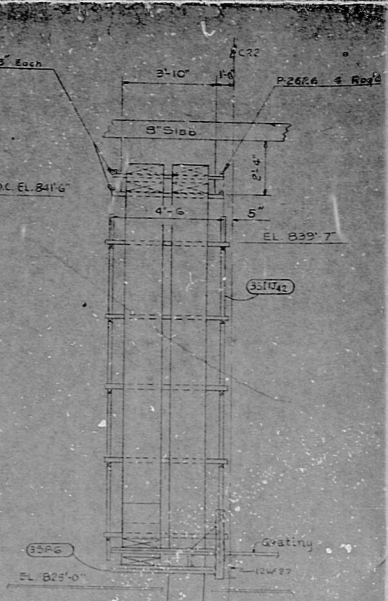
34"
22"
17"
11"
8.5"
11"
17"
22"
34"



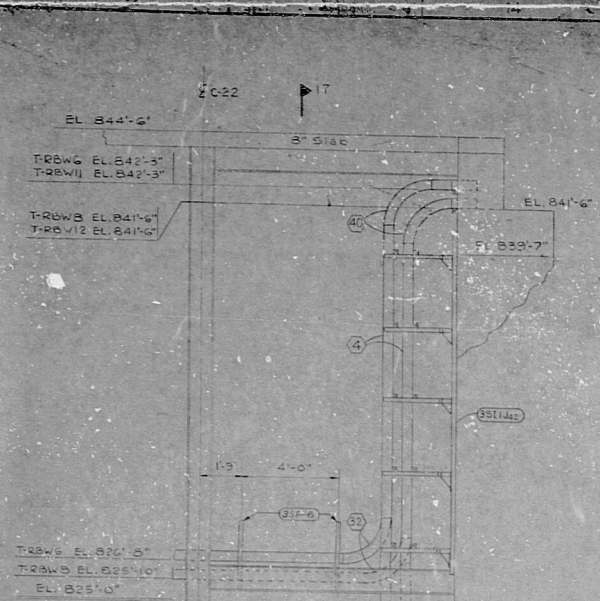
ENLARGED PLAN OF INTERMEDIATE FLOOR NW AREA
SCALE 3/8"=1'-0"
O-2886 E-3



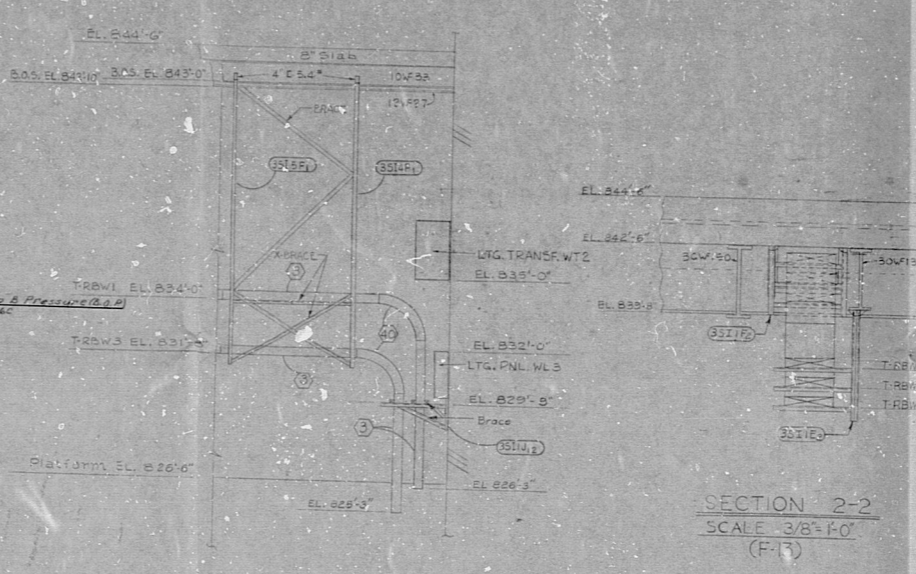
SECTION 18-19
SCALE 3/8"=1'-0"
(J-3)



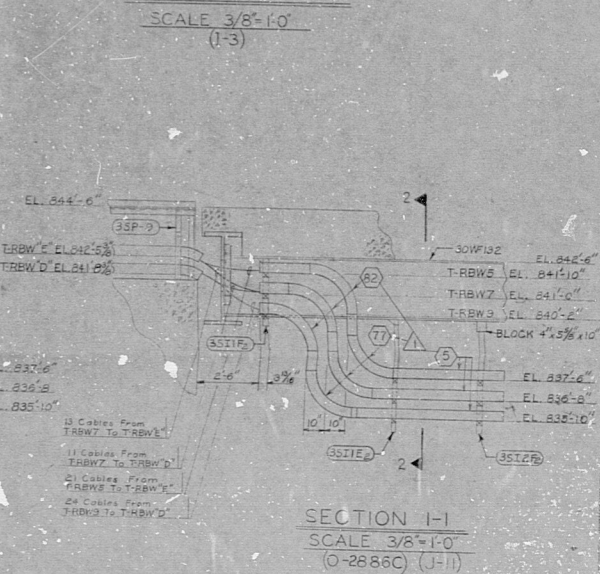
SECTION 17-17
SCALE 3/8"=1'-0"
(J-3)



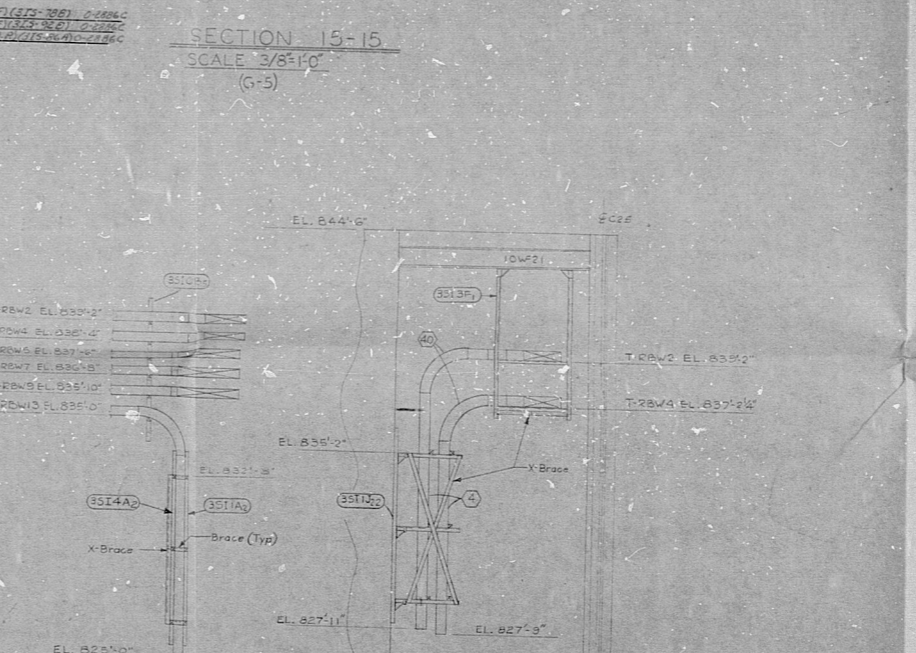
SECTION 16-16
SCALE 3/8"=1'-0"
(J-3)



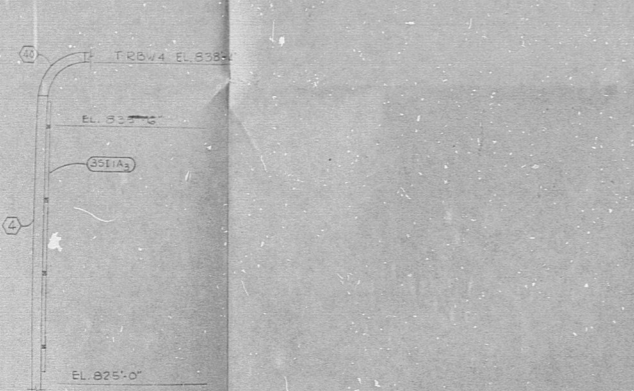
SECTION 2-2
SCALE 3/8"=1'-0"
(F-15)



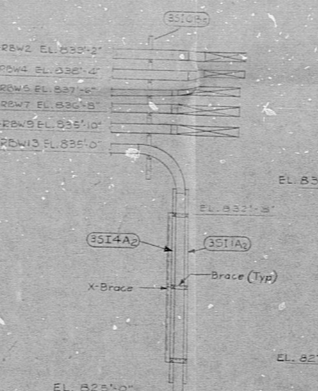
SECTION 1-1
SCALE 3/8"=1'-0"
(O-2886C) (J-11)



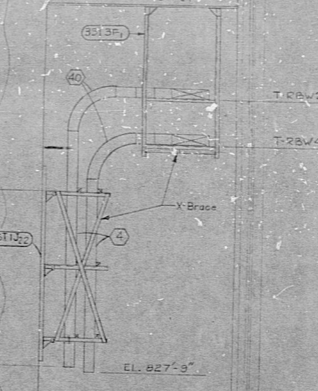
SECTION 15-15
SCALE 3/8"=1'-0"
(G-5)



SECTION 4-4
SCALE 3/8"=1'-0"
(O-2886C) (G-12)



SECTION 7-7
SCALE 3/8"=1'-0"
(O-2886C) (E-9)



SECTION 8-8
SCALE 3/8"=1'-0"
(O-2886C) (F-9)

- REFERENCE DRAWINGS
- O-2886a Conduit & Tray Section Details
 - O-2886c Tray Support Details
 - O-2886e Conduit & Tray Section 4 Details
 - O-2886f Conduit & Tray Intermediate Floor El. 825'-0"
 - O-2886g Conduit & Tray Section 6 Details
 - O-2886h Electrical Panel Station Arrangement

- SYMBOL LIST
- ☐ Indicates Tray Going Away From Observer
 - ☐ Indicates Tray Coming Toward Observer
 - ☐ Indicates End View of Unistrut Support
 - ☐ Indicates Unit Number 3
 - ☐ Indicates Support
 - ☐ Indicates Intermediate Floor
 - ☐ Indicates Number Designation
 - ☐ Indicates Type Designation

- NOTES
1. Elbow Indicates Cable Tray With Elevation Shown at Bottom of Tray. Small Length of Tray is Usable Depth of Tray. Tray Width As Indicated on Plan.
 2. For Tray Fillings (All of Material Number Designations) See Intermediate Floor Cables, Cables.
 3. Tray Braces are Constructed of Unistrut PH000 Unless Shown Otherwise.

TERA APERTURE CARD

NUCLEAR SAFETY RELATED

DATE: 10/27/53
ENGINEER: [Signature]
APPROVED: [Signature]

OCYTEL CORPORATION
OCCONEE NUCLEAR STATION UNITS 1, 2 & 3
REACTOR BUILDING UNIT 3
CONDUIT AND TRAY
SECTION AND DETAILS
INTERMEDIATE FLOOR EL. 825'-0"
DWG. NO. O-2886D

NO.	REVISION	DATE	BY	APP'D.
1	ISSUED FOR CONSTRUCTION	10/27/53	[Signature]	[Signature]
2	ISSUED FOR APPROVAL	10/27/53	[Signature]	[Signature]
3	REVISION	10/27/53	[Signature]	[Signature]

34"
22"
17"
11"
8.5"
11"
17"
22"
34"

RIDS-PDR

8105050758

