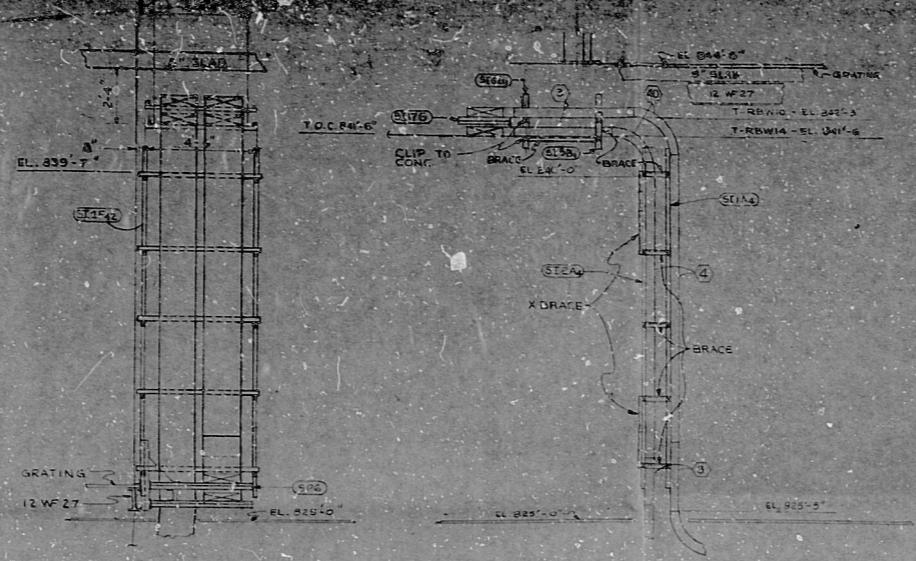
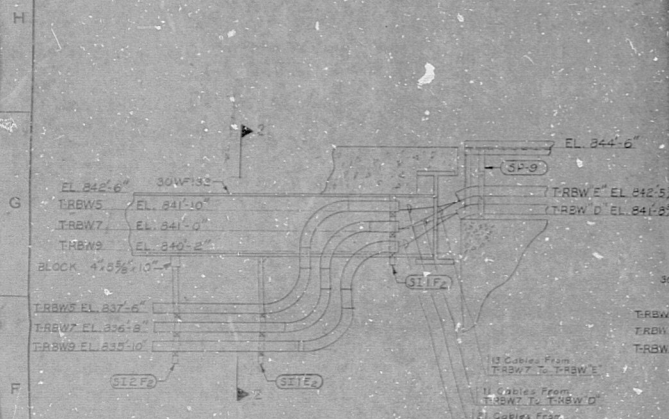


SECTION 16-16
SCALE 3/8"=1'-0"
(I-12)

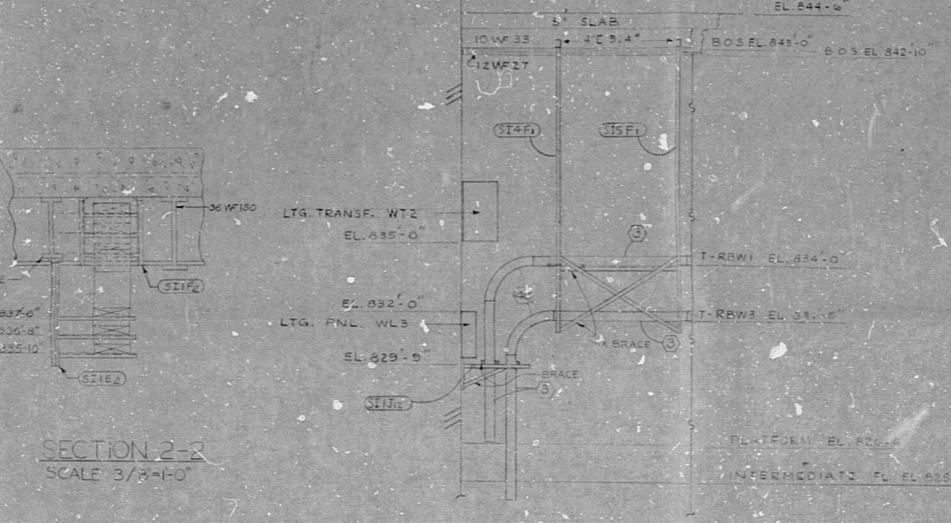


SECTION 17-17
SCALE 3/8"=1'-0"

SECTION 18-18
SCALE 3/8"=1'-0"
(I-13)

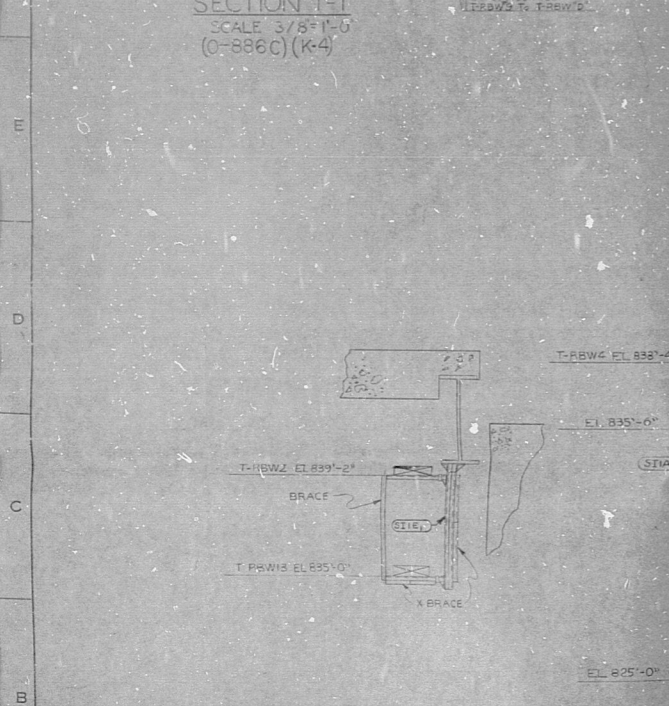


SECTION 1-1
SCALE 3/8"=1'-0"
(0-886C)(K-4)



SECTION 2-2
SCALE 3/8"=1'-0"

SECTION 5-5
SCALE 3/8"=1'-0"
(G-10)

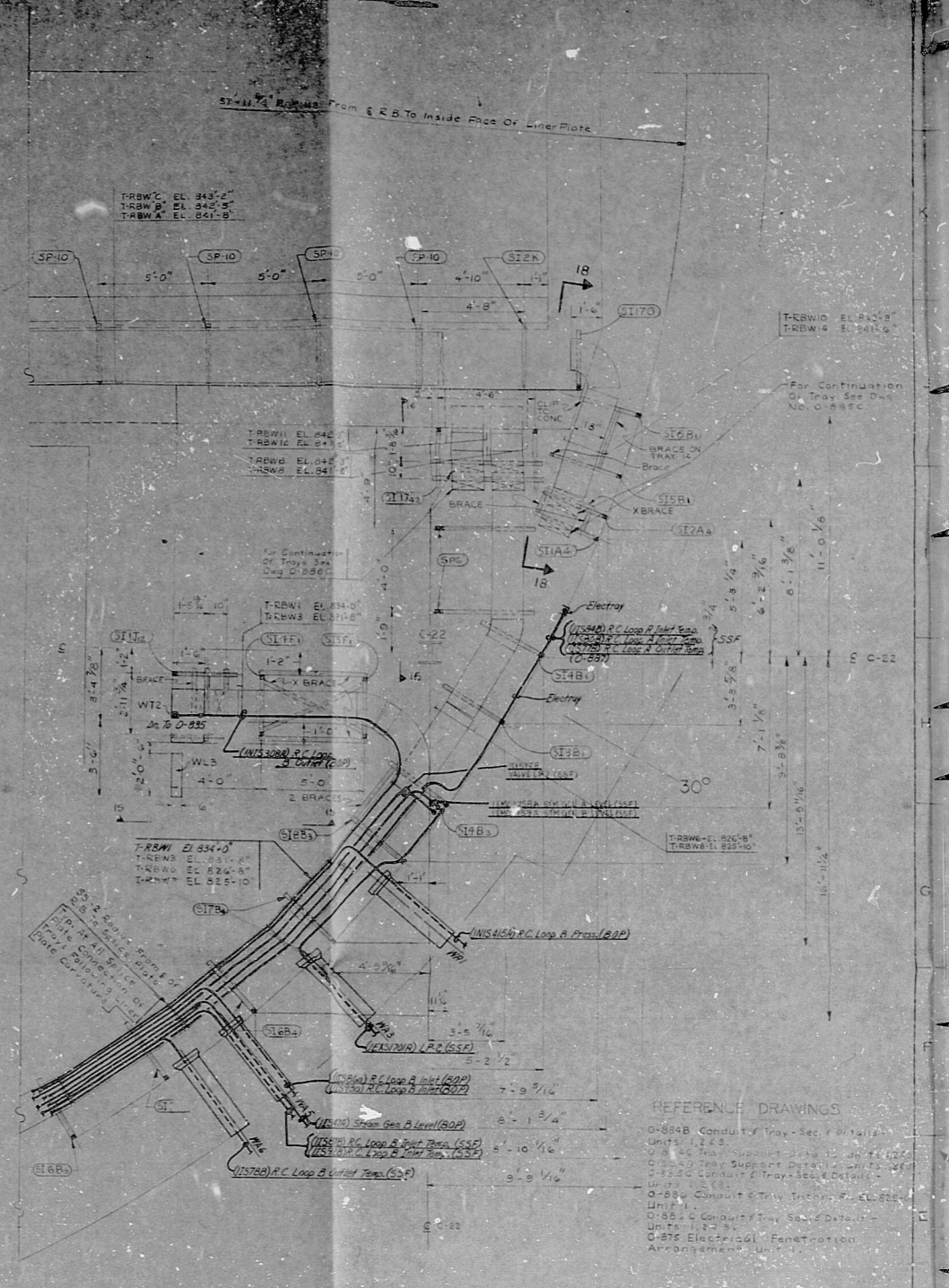


SECTION 3-3
SCALE 3/8"=1'-0"
(0-886C)(G-4)

SECTION 4-4
SCALE 3/8"=1'-0"
(0-886C)(G-4)

SECTION 7-7
SCALE 3/8"=1'-0"
(0-886C)(F-5)

SECTION 8-8
SCALE 3/8"=1'-0"
(0-886C)(F-5)



ENLARGED PLAN OF INTERMEDIATE FLOOR S.W. AREA
SCALE 3/8"=1'-0"
DWG. NO. 886 (F-8)

NOTES

1. Elev. Indicates Cable Tray With Elev. Shown At Bottom Of Tray - Overall Depth Of Tray is Usable Depth Of Tray + 4". Tray Width As Indicated On Plan.
2. For Tray - Fittings (Bill Of Material Number Designations) See Intermediate Fl. Plan DWG. 886.
3. Tray Braces Are Constructed Of Unistrut P1000 Unless Shown Otherwise.

SYMBOL LIST

- Indicates Tray Going Away From Observer
- Indicates Tray Coming Toward Observer
- Indicates End View Of Unistrut Support
- Indicates Support
- Indicates Plate
- Indicates Number Designation
- Indicates Cable Designation

TERA APERTURE CARD

DATE	ENGINEER	APPROVED
BECHTEL CORPORATION		
DUKE POWER COMPANY		
OCONEE NUCLEAR STATION UNITS 1283		
REACTOR BUILDING UNIT -		
CONDUIT AND TRAY		
SECTION AND DETAILS		
INTERMEDIATE FLOOR, EL. 825.0"		
NO.	REVISIONS	DATE
1		
2		
3		
4		
5		
6		
7		
8		
9		
10		
11		
12		
13		
14		

DWG. NO. 0886D
610605759

RIDS-POR

8105050730

