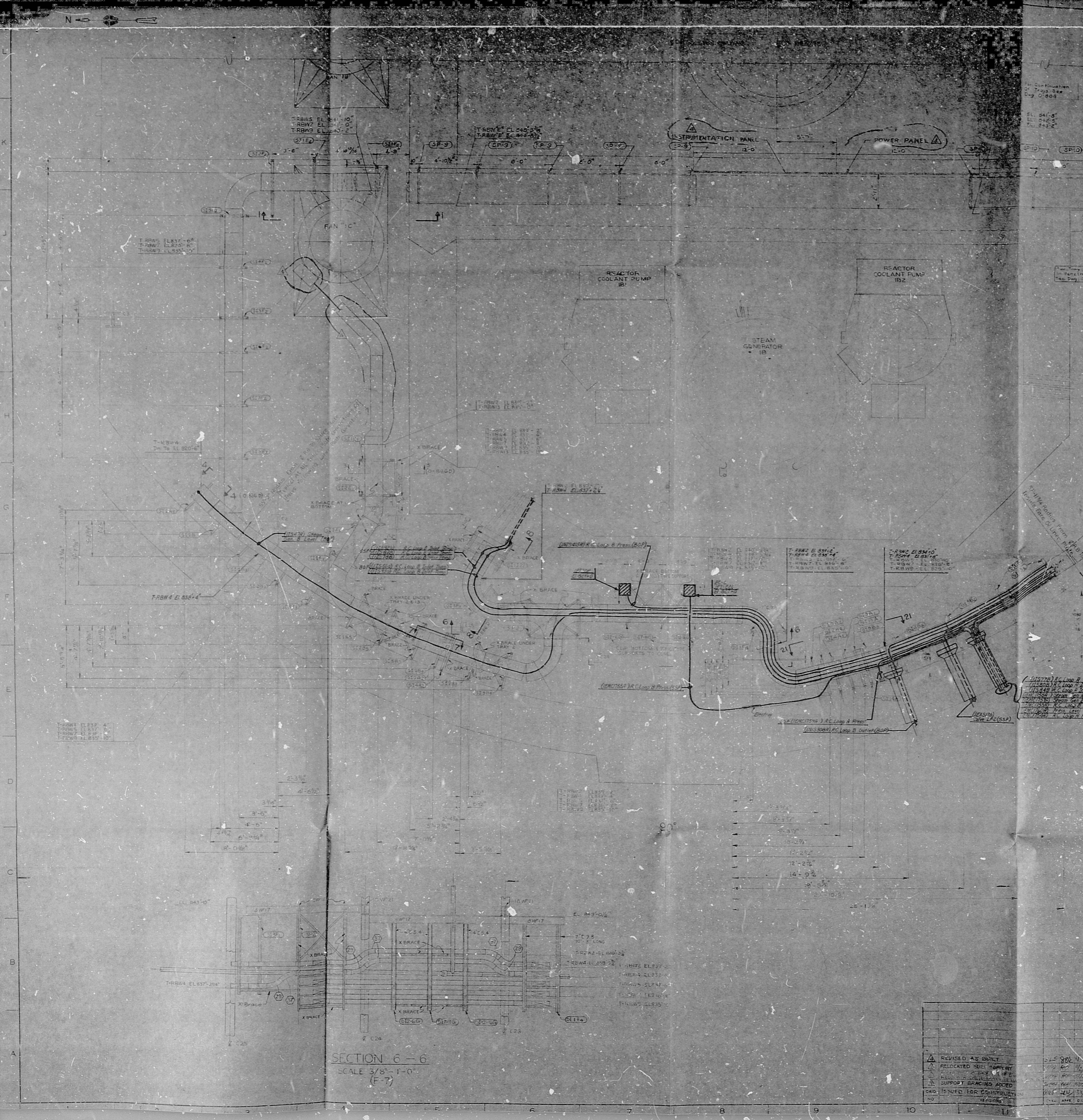


34"  
22"  
17"  
11"  
8.5"  
11"  
17"  
22"  
34"

34"  
22"  
17"  
11"  
8.5"  
11"  
17"  
22"  
34"



SECTION 21-21  
SCALE: 3/8" = 1'-0"  
(E-9)

- REFERENCE DRAWINGS**
- 0-879: Electrical Penetration Arrangement
  - 0-879A: Electrical Penetration Schedule
  - 0-879B: Electrical Penetration Schedule
  - 0-879C: Electrical Penetration Schedule
  - 0-886: Conduit & Tray Intermediate Floor (EL. 825'-0")
  - 0-886D: Conduit & Tray Sections & Details Intermediate Fl. EL. 825'-0"
  - 0-886B: Conduit & Tray Sections & Details
  - 0-886C: Tray Details
  - 0-652: Electrical Cable Tray Support, Structural Steel

- SYMBOL LIST**
- ☐ Indicates Tray Gang Away from Observer
  - ☐ Indicates Tray Facing Toward Observer
  - X Indicates End View of Unistrut Support
  - Indicates Support
  - Indicates Intermediate Floor
  - Indicates Number Designation
  - Indicates Type Designation
  - ② Indicates Bill of Material Item Number

- NOTES**
1. Cable Tray with elevation shown at bottom of tray. Overall depth of tray shall be indicated on plan.
  2. Tray Braces are constructed of Unistrut P1000 unless shown otherwise.

SECTION 6-6  
SCALE: 3/8" = 1'-0"  
(F-7)

DATE	ENGINEER	APPROVED	APPROVED
5/20/60	W. J. Wilson	W. J. Wilson	W. J. Wilson
BECHTEL CORPORATION			
DUKE POWER COMPANY			
CONEC NUCLEAR STATION UNITS 1, 2 & 3			
REACTOR BUILDING UNIT-1			
CONDUIT AND TRAY			
SECTION AND DETAILS			
INTERMEDIATE FLOOR EL. 825'-0"			
REVISION AS BUILT	DATE	BY	APPROVED
RELOCATED TRAY SUPPORT	1/22/60	W. J. Wilson	W. J. Wilson
REVISION AS BUILT	1/22/60	W. J. Wilson	W. J. Wilson
SUPPORT BRACING ADDED	1/22/60	W. J. Wilson	W. J. Wilson
ISSUED FOR CONSTRUCTION	1/22/60	W. J. Wilson	W. J. Wilson
NO	DATE	BY	APPROVED
1	1/22/60	W. J. Wilson	W. J. Wilson
2	1/22/60	W. J. Wilson	W. J. Wilson
3	1/22/60	W. J. Wilson	W. J. Wilson
4	1/22/60	W. J. Wilson	W. J. Wilson
5	1/22/60	W. J. Wilson	W. J. Wilson
6	1/22/60	W. J. Wilson	W. J. Wilson
7	1/22/60	W. J. Wilson	W. J. Wilson
8	1/22/60	W. J. Wilson	W. J. Wilson
9	1/22/60	W. J. Wilson	W. J. Wilson
10	1/22/60	W. J. Wilson	W. J. Wilson
11	1/22/60	W. J. Wilson	W. J. Wilson
12	1/22/60	W. J. Wilson	W. J. Wilson
13	1/22/60	W. J. Wilson	W. J. Wilson
14	1/22/60	W. J. Wilson	W. J. Wilson
15	1/22/60	W. J. Wilson	W. J. Wilson
16	1/22/60	W. J. Wilson	W. J. Wilson
17	1/22/60	W. J. Wilson	W. J. Wilson
18	1/22/60	W. J. Wilson	W. J. Wilson
19	1/22/60	W. J. Wilson	W. J. Wilson
20	1/22/60	W. J. Wilson	W. J. Wilson
21	1/22/60	W. J. Wilson	W. J. Wilson
22	1/22/60	W. J. Wilson	W. J. Wilson
23	1/22/60	W. J. Wilson	W. J. Wilson
24	1/22/60	W. J. Wilson	W. J. Wilson
25	1/22/60	W. J. Wilson	W. J. Wilson
26	1/22/60	W. J. Wilson	W. J. Wilson
27	1/22/60	W. J. Wilson	W. J. Wilson
28	1/22/60	W. J. Wilson	W. J. Wilson
29	1/22/60	W. J. Wilson	W. J. Wilson
30	1/22/60	W. J. Wilson	W. J. Wilson
31	1/22/60	W. J. Wilson	W. J. Wilson
32	1/22/60	W. J. Wilson	W. J. Wilson
33	1/22/60	W. J. Wilson	W. J. Wilson
34	1/22/60	W. J. Wilson	W. J. Wilson
35	1/22/60	W. J. Wilson	W. J. Wilson
36	1/22/60	W. J. Wilson	W. J. Wilson
37	1/22/60	W. J. Wilson	W. J. Wilson
38	1/22/60	W. J. Wilson	W. J. Wilson
39	1/22/60	W. J. Wilson	W. J. Wilson
40	1/22/60	W. J. Wilson	W. J. Wilson
41	1/22/60	W. J. Wilson	W. J. Wilson
42	1/22/60	W. J. Wilson	W. J. Wilson
43	1/22/60	W. J. Wilson	W. J. Wilson
44	1/22/60	W. J. Wilson	W. J. Wilson
45	1/22/60	W. J. Wilson	W. J. Wilson
46	1/22/60	W. J. Wilson	W. J. Wilson
47	1/22/60	W. J. Wilson	W. J. Wilson
48	1/22/60	W. J. Wilson	W. J. Wilson
49	1/22/60	W. J. Wilson	W. J. Wilson
50	1/22/60	W. J. Wilson	W. J. Wilson

TEMP APERTURE CARD

DWG. NO. 0-886C

810500747



RDS-PDR

8105030727

