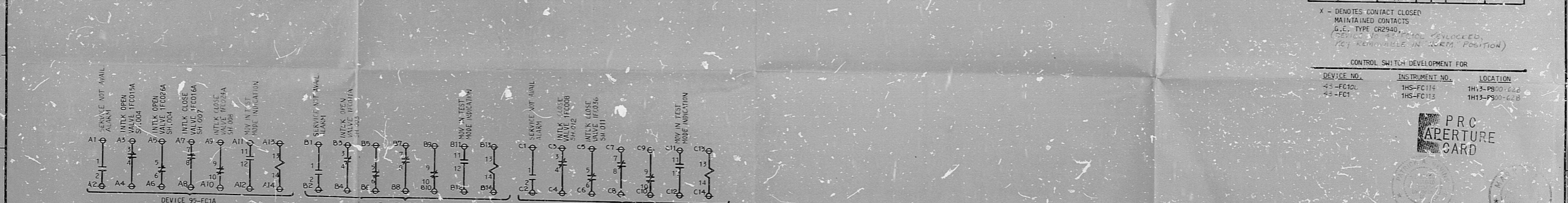
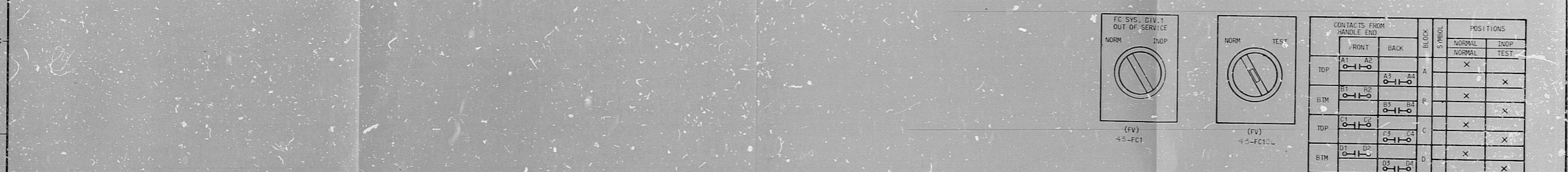


MOV OVERLOAD BYPASS RELAYS FOR FC SYSTEM (1E)
 DEVICE FC1 WIRING DIAGRAM DWG. E02-1AP93E-002

SERVICE NOT AVAILABLE ALARM FOR FC SYS. (1E)
 WIRING DIAGRAM DWG. E02-1AP93E-002



DEVICE 95-FC1A
 G.E. TYPE HFA RELAY, COF 24
 AT AUX. BLDG. MCC 1A4 (1AP93E) COMPT. 2A

DEVICE 95-FC1B
 G.E. TYPE HFA RELAY, COF 24
 AT AUX. BLDG. MCC 1A4 (1AP93E) COMPT. 2A

DEVICE 95-FC1C
 G.E. TYPE HFA RELAY, COF 24
 AT AUX. BLDG. MCC 1A4 (1AP93E) COMPT. 2A

REV.	DATE	REV'D	PREPARED	REVIEWED	APPROVED	PURPOSE	FILM
A	6-12-77					FOR PCCC FABRICATION ONLY, SPEC. NO. K-220	
B	01-31-80					FOR CONSTRUCTION SPEC. NO. K-2999	
C	12-30-81					MISC. REV. FOR CONSTRUCTION SPEC. K-2999	
D	04-06-81					REV. FOR CONSTRUCTION SPEC. K-2999	
E	1-4-82					REV. FOR CONSTRUCTION SPEC. NO. K-2999	

NUCLEAR SAFETY RELATED EQUIPMENT IS SHOWN ON THIS DRAWING.
 FOR SAFETY CLASSIFICATION SEE EQUIPMENT VALVE OR INSTRUMENT LISTS.

SCALE: 4536

PROJECT NUMBER: 4536

SARGENT & LUNDY
 CHICAGO

DRAWING NO. E02-1FC99
 SHEET 015 OF

8210260103

